

給水ユニット接続図

TYPE

機種: NX-VFC

[D:Automatic alternate operation]

[W:Automatic alternate parallel operation]

■Power source

3 ~ 50/60Hz

380/400/400-440V

■Ground

Type C ground

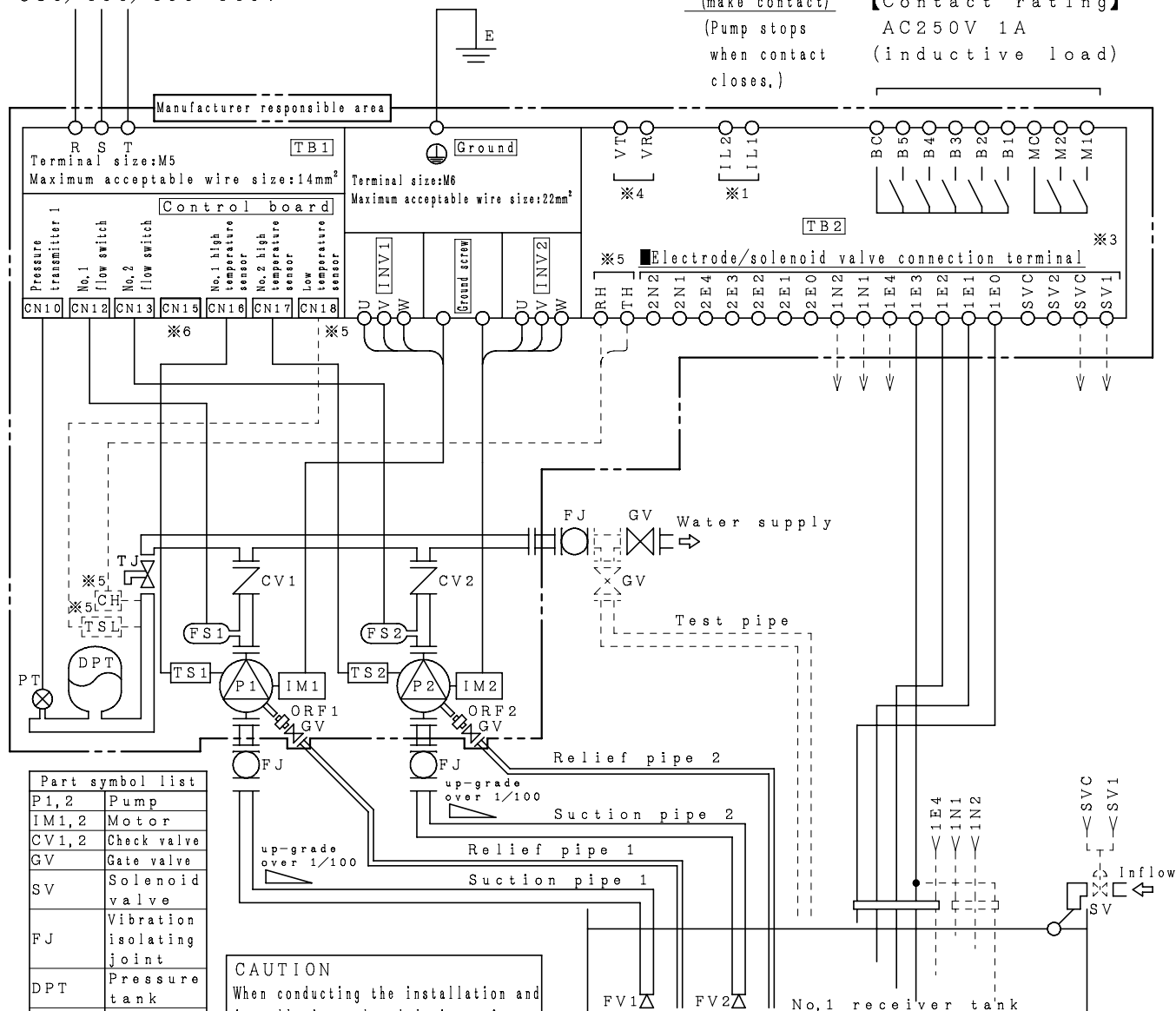
■Interlock

(make contact)

(Pump stops
when contact
closes.)

■External relay output※2

【Contact rating】

AC250V 1A
(inductive load)

Part symbol list	
P1, 2	Pump
IM1, 2	Motor
CV1, 2	Check valve
GV	Gate valve
SV	Solenoid valve
FJ	Vibration isolating joint
DPT	Pressure tank
TS1, 2	High temperature sensor
※5 TSL	Low temperature sensor
FS1, 2	Flow switch
PT	Pressure transmitter
※5 CH	Cement heater
TJ	TJ valve
TB1, 2	Terminal block
INV1, 2	Inverter
ORF1, 2	Orifice
FV1, 2	Foot valve

CAUTION

When conducting the installation and installation-related design, refer to the installation manual without fail.

Account for the line type

Solid line — Connections required to achieve the standard functions.

Dotted line --- Connections available as optional functions.

TB2 Terminal layout

Terminal size:M3 Maximum acceptable wire size:1.25mm²

1L1 1L2 1E0 1E1 1E2 1E3 1E4 1N1 1N2 2E0 2E1 2E2 2E3 2E4 2N1 2N2	M1 M2 MC B1 B2 B3 B4 B5 BC	TH RH SV1 SVC SV2 SVC VR VT
---	----------------------------	-----------------------------

仕様 SPEC.	出力 OUTPUT		0.4~7.5 kW	
	相・電圧 PHASE & VOLTAGE		3 φ 380/400/400-440 V	
	周波数 FREQUENCY		50/60 Hz	

機器名称 ITEM NAME		機器番号 ITEM No.	
型式 MODEL		数量 QUANTITY	

給水ユニット接続図

TYPE

機種：NX-VFC

[D:Automatic alternate operation]

[W:Automatic alternate parallel operation]

- ※1 This is connected when the interlock function is used. Though the interlock input signal is the make contact when delivered, it can be changed to the break contact by settings.
- ※2 Content of the external relay output can be change by settings.
For further details, see the connection pattern diagram.
- ※3 Depending on the setting, the system can be expanded to single receiver tanks, 5P electrodes and solenoid valve. For further details on the wiring, see the connection pattern diagram.
Voltage of solenoid valve is 200V. Current of solenoid valve must not exceed 0.3A.
- ※4 This terminal is for the cooling fan of outdoor guard. Please do not use other equipment.
- ※5 The low temperature sensor and heater for the freeze prevention system are provided as part of special specifications.
- ※6 Please do not use this connector.

仕様 SPEC.	出力 OUTPUT	0.4~7.5		kW
	相・電圧 PHASE & VOLTAGE	3	φ	380/400/400-440 V
	周波数 FREQUENCY	50/60		Hz

機器名称 ITEM NAME		機器番号 ITEM No.	
型式 MODEL		数量 QUANTITY	