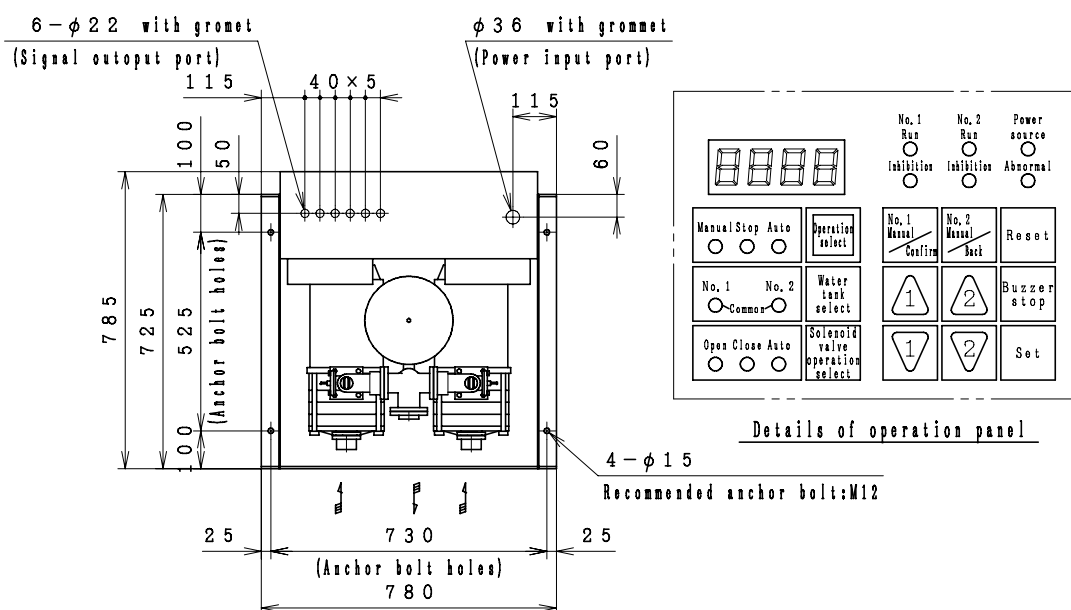
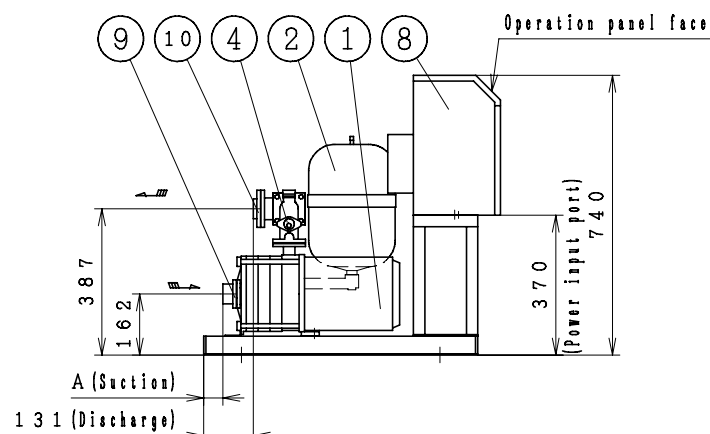
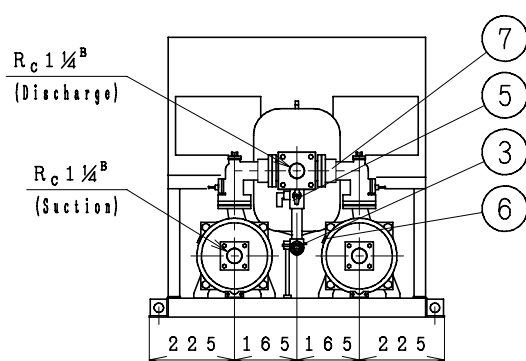


Automatic Water Supply Units ASSEMBLY DRAWING

TYPE : NX-VFC [Positive Section][Constant Presumed Terminal Pressure Water Supply][D:Automatic Alternate Operation]



No.	Parts Name	Q'T
1	Pump	2
2	Pressure tank (100)	1
3	Pressure transmitter	1
4	Flow switch	2
5	TJ valve	1
6	Protector	2
7	Discharge elbow (with check valve)	2
8	Control panel	1
9	Special flange (Suction)	2
10	Special flange (Discharge)	1



MODEL	OUTPUT kW	A	MAX SPEED (400V) min ⁻¹	MAX SPEED (380V) min ⁻¹	MASS kg
NX-VFC322-0.4D	0.4	114	3540	3480	99
NX-VFC322-0.75D	0.75	114	3660	3600	107
NX-VFC323-1.1D	1.1	82	3780	3720	116
NX-VFC323-1.5D	1.5	82	3780	3720	118
NX-VFC324-2.2D	2.2	51	3600	3540	131

Special flanges accompanied with product shall be applied to pipe connection.

A tube of $\phi 10\text{mm}$ ($3/8''$) can be connected to the TJ valve.

A C C E S S O R I E S		
		M A S S k g

UNIT SPECIFICATION				MOTOR SPECIFICATION	
CAPACITY	m ³ /min	SIZE	Suc. 32mm/Dis. 32mm	POLE	2 P
TOTAL HEAD	m	FREQUENCY	Hz	TYPE	T. E. F. C
MAX SPEED	min ⁻¹	PHASE&VOLTAGE	3 φ V	OUTPUT	kW

I T E M N A M E	I T E M N o .
M O D E L	Q U A N T I T Y