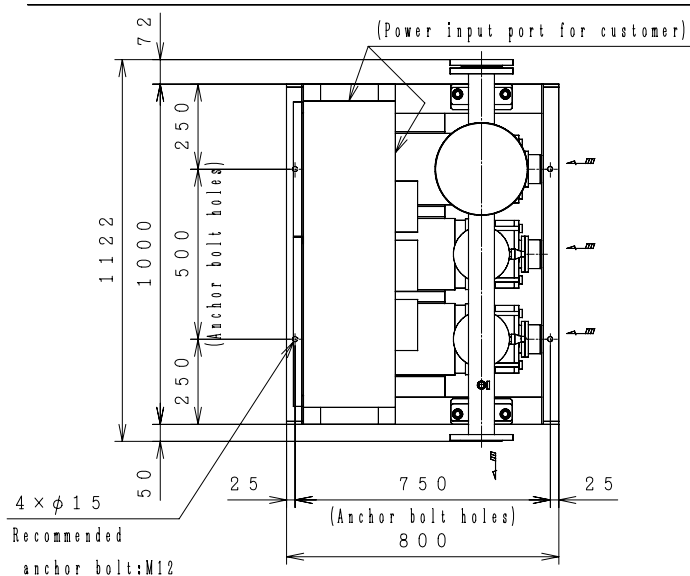


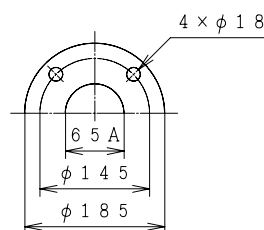
Automatic Water Supply Units ASSEMBLY DRAWING

TYPE : NX - VFC

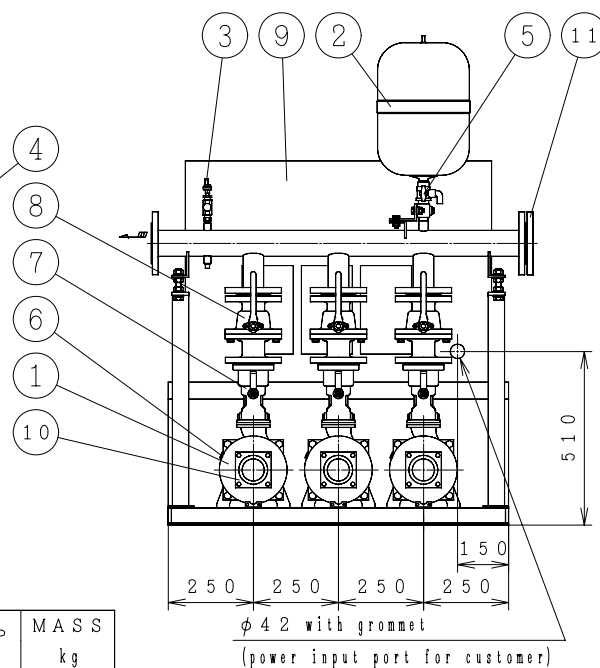
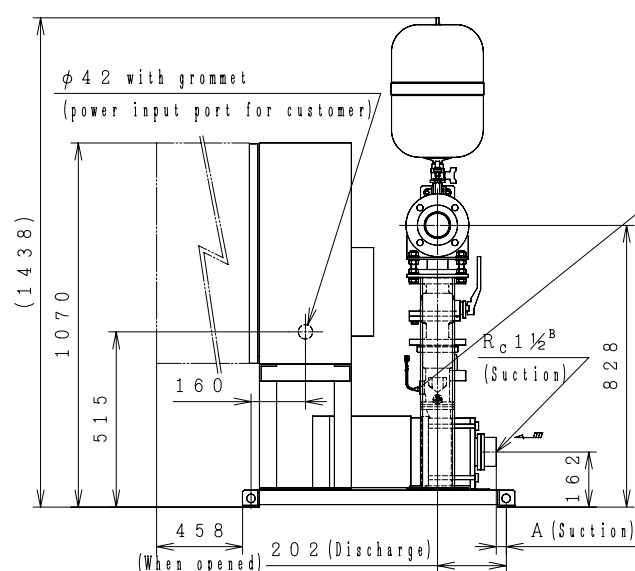
[Positive Suction] [Constant Presumed Terminal Pressure Water Supply] [2-Pumps Parallel 3-Pumps Rotation]



Dis. flange



No	Parts Name	Q'Ty
1	Pump	3
2	Pressure tank (20ℓ)	1
3	Pressure transmitter	1
4	Flow switch	3
5	TJ valve	1
6	Protector	3
7	Check valve (with flow switch)	3
8	Stop valve	3
9	Control panel	1
10	Special flange (Suction)	3
11	Blind Flange	1



MODEL	OUTPUT kW	A	MAX SPEED (400V) min ⁻¹	MAX SPEED (380V) min ⁻¹	MASS kg
NX-65VFC401-1.1W×3	1.1	111.5	3600	3540	339
NX-65VFC402-1.5W×3	1.5	64.5	3660	3600	349
NX-65VFC402-2.2W×3	2.2	64.5	3600	3540	356
NX-65VFC402-3.7W×3	3.7	64.5	3480	3420	381
NX-65VFC403-3.7W×3	3.7	17.5	3540	3480	389

Suction companion flange require the use of the special flanges accompanied with the product.

A tube of $\phi 10\text{mm}$ ($3/8'$) can be connected to TJ valve.

(Control Panel Size 900×650×350)

A C C E S S O R I E S	

UNIT SPECIFICATION				MOTOR SPECIFICATION	
CAPACITY	m ³ /min	SIZE	Suc. 40mm/Dis. 65mm	POLE	2 P
TOTAL HEAD	m	FREQUENCY	Hz	TYPE	T. E. F. C
MAX SPEED	min ⁻¹	PHASE&VOLTAGE	3 φ V	OUTPUT	kW×2

I T E M N A M E		I T E M N o .	
M O D E L		Q U A N T I T Y	