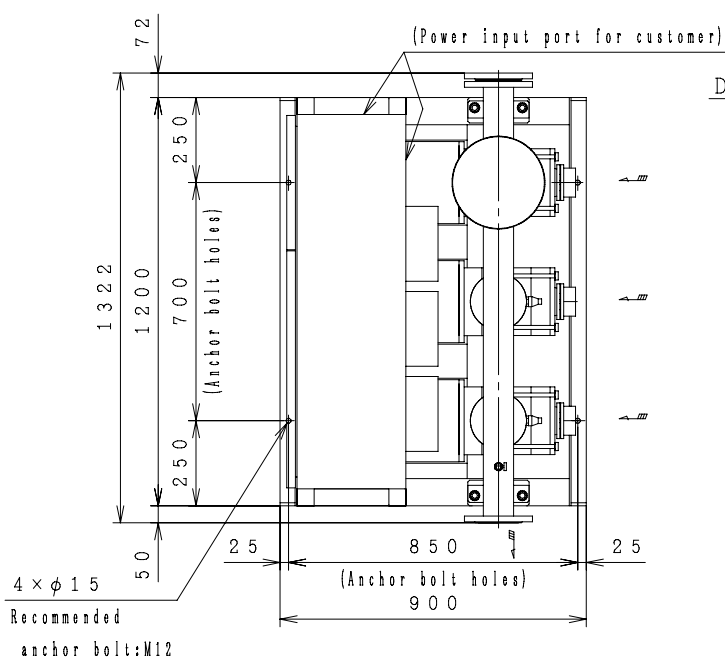


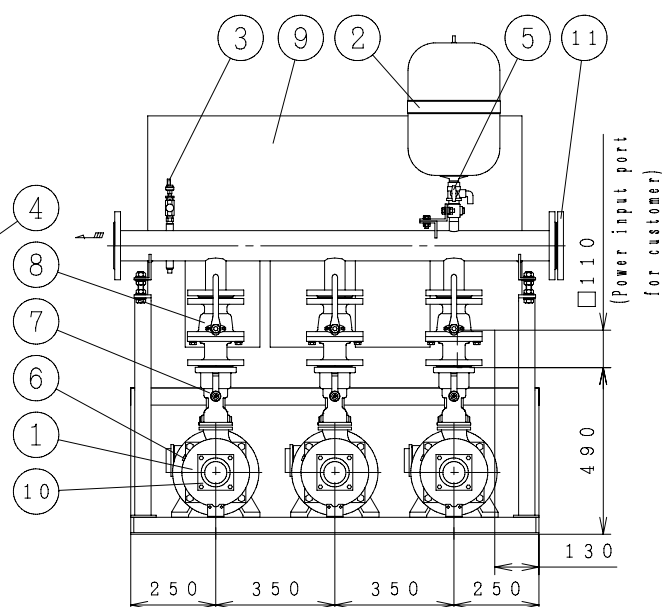
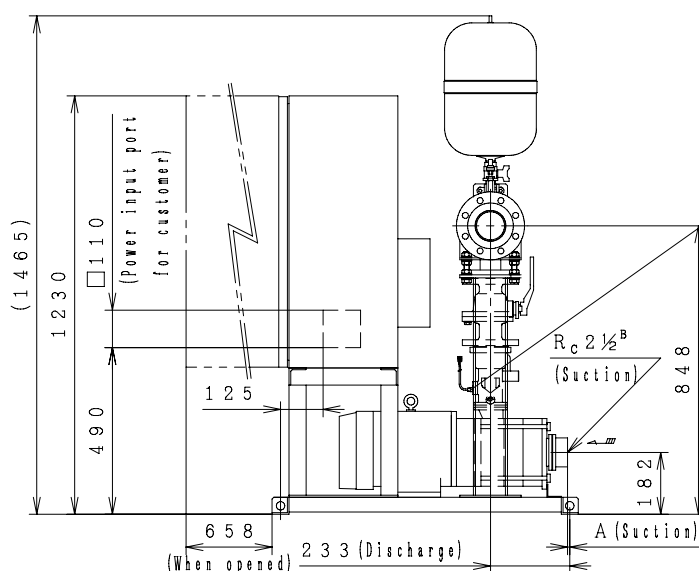
Automatic Water Supply Units ASSEMBLY DRAWING

TYPE : NX - VFC

[Positive Suction] [Constant Presumed Terminal Pressure Water Supply] [2-Pumps Parallel 3-Pumps Rotation]



No	Parts Name	Q'TY
1	Pump	3
2	Pressure tank(20ℓ)	1
3	Pressure transmitter	1
4	Flow switch	3
5	TJ valve	1
6	Protector	3
7	Check valve	3
	(with flow switch)	
8	Stop valve	3
9	Control panel	1
10	Special flange(Suction)	3
11	Blind Flange	1



MODEL	OUTPUT kW	A	MAX SPEED (400V) min ⁻¹	MAX SPEED (380V) min ⁻¹	MASS kg
NX-80VFC653-7.5W×3	7.5	5.5	3600	3540	496

Suction companion flange require the use of the special flanges accompanied with the product.

A tube of φ10mm(3/8') can be connected to TJ valve.

(Control Panel Size 1100×800×350)

ACCESSORIES	

MASS kg

UNIT SPECIFICATION				MOTOR SPECIFICATION	
CAPACITY	m ³ /min	SIZE	Suc. 65mm/Dis. 80mm	POLE	2 P
TOTAL HEAD	m	FREQUENCY	Hz	TYPE	T. E. F. C
MAX SPEED	min ⁻¹	PHASE&VOLTAGE	3 φ V	OUTPUT	kW×2
ITEM NAME				ITEM No.	
MODEL				QUANTITY	