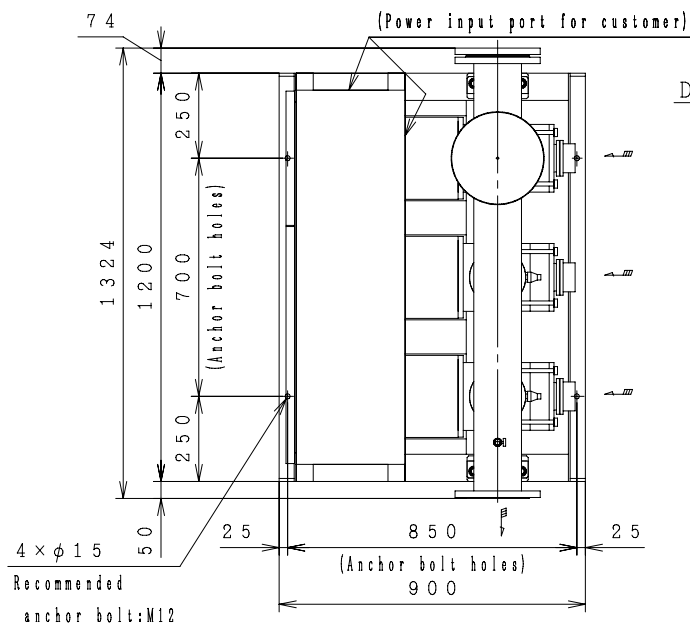
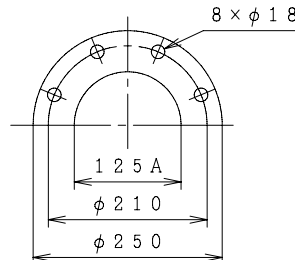


## Automatic Water Supply Units ASSEMBLY DRAWING

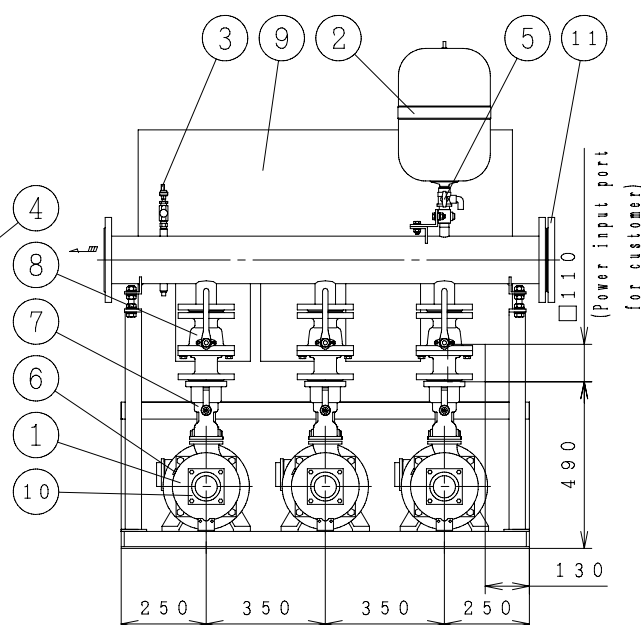
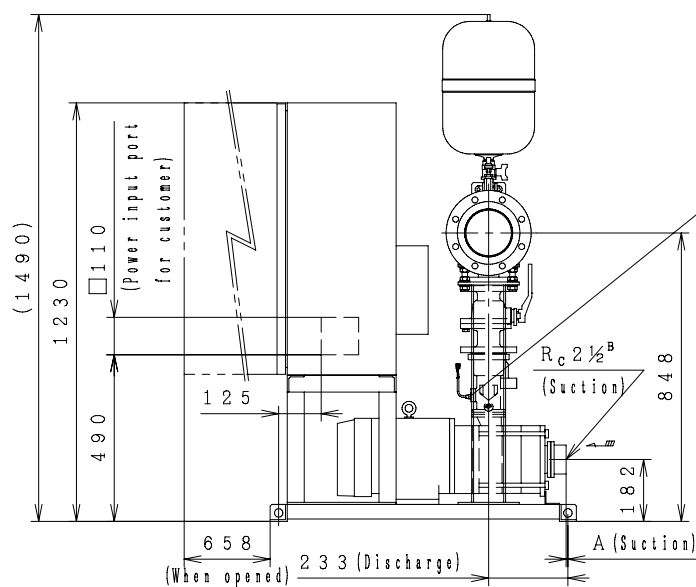
TYPE : NX-VFC [Positive Suction] [Constant Presumed Terminal Pressure Water Supply] [3-Pumps Parallel 3-Pumps Rotation]



Dis. flange



No	Parts Name	Q'TY
1	Pump	3
2	Pressure tank(20ℓ)	1
3	Pressure transmitter	1
4	Flow switch	3
5	TJ valve	1
6	Protector	3
7	Check valve	3
8	(with flow switch)	3
9	Stop valve	3
10	Control panel	1
11	Special flange(Suction)	3
12	Blind Flange	1



MODEL	OUTPUT kW	A	MAX SPEED (400V) min <sup>-1</sup>	MAX SPEED (380V) min <sup>-1</sup>	MASS kg
NX-125VFC653-7.5T×3	7.5	5.5	3600	3540	511

Suction companion flange require the use of the special flanges accompanied with the product.  
 A tube of  $\phi 10\text{mm}$  (3/8") can be connected to TJ valve. (Control Panel Size 1100×800×350)

ACCESSORIES	

MASS kg

UNIT SPECIFICATION				MOTOR SPECIFICATION	
CAPACITY	m <sup>3</sup> /min	SIZE	Suc. 65mm/Dis. 125mm	POLE	2 P
TOTAL HEAD	m	FREQUENCY	Hz	TYPE	T. E. F. C
MAX SPEED	min <sup>-1</sup>	PHASE&VOLTAGE	3 $\phi$ V	OUTPUT	kW×3
ITEM NAME		ITEM No.			
MODEL		QUANTITY			