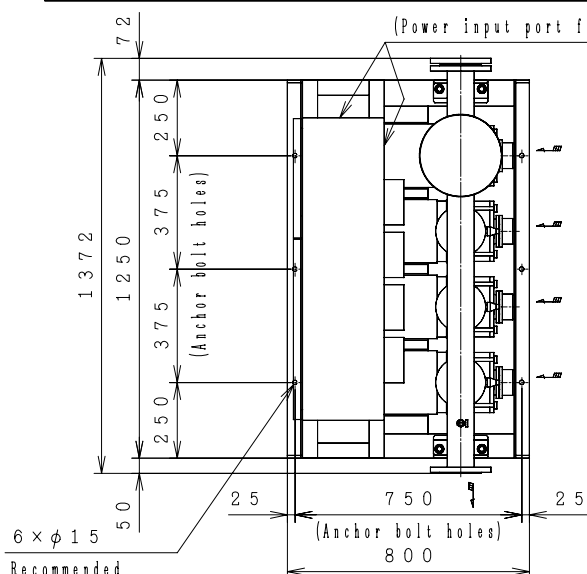


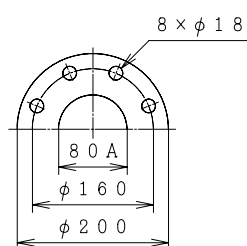
Automatic Water Supply Units ASSEMBLY DRAWING

TYPE : NX-VFC

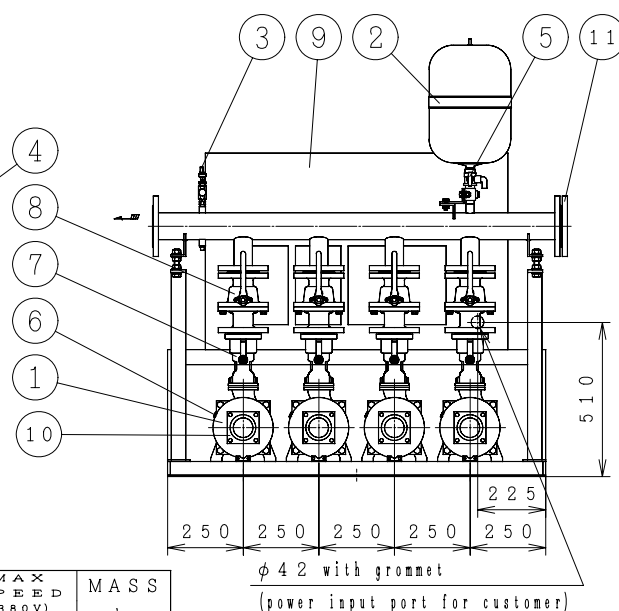
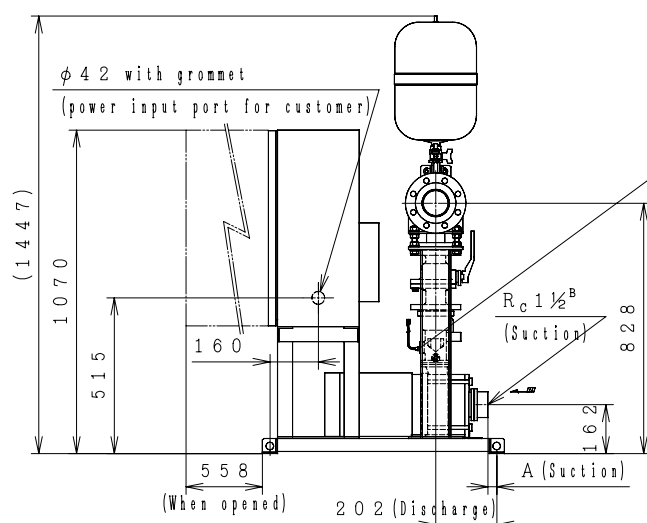
[Positive Section] [Constant Presumed Terminal Pressure Water Supply] [3-Pumps Parallel 4-Pumps Rotation]



Dis. flange



No	Parts Name	Q'TY
1	Pump	4
2	Pressure tank(20ℓ)	1
3	Pressure transmitter	1
4	Flow switch	4
5	TJ valve	1
6	Protector	4
7	Check valve (with flow switch)	4
8	Stop valve	4
9	Control panel	1
10	Special flange(Suction)	4
11	Blind Flange	1



MODEL	OUTPUT kW	A	MAX SPEED (400V) min ⁻¹	MAX SPEED (380V) min ⁻¹	MASS kg
NX-80VFC401-1.1T×4	1.1	111.5	3600	3540	426
NX-80VFC402-1.5T×4	1.5	64.5	3660	3600	440
NX-80VFC402-2.2T×4	2.2	64.5	3600	3540	449
NX-80VFC402-3.7T×4	3.7	64.5	3480	3420	482
NX-80VFC403-3.7T×4	3.7	17.5	3540	3480	493

Suction companion flange require the use of the special flanges accompanied with the product.

A tube of φ10mm(3/8') can be connected to TJ valve.

(Control Panel Size 1000×650×350)

ACCESSORIES	

MASS kg

UNIT SPECIFICATION				MOTOR SPECIFICATION	
CAPACITY	m ³ /min	SIZE	Suc. 40mm/Dis. 80mm	POLE	2 P
TOTAL HEAD	m	FREQUENCY	Hz	TYPE	T. E. F. C
MAX SPEED	min ⁻¹	PHASE&VOLTAGE	3 φ V	OUTPUT	kW×3
ITEM NAME		ITEM No.			
MODEL		QUANTITY			