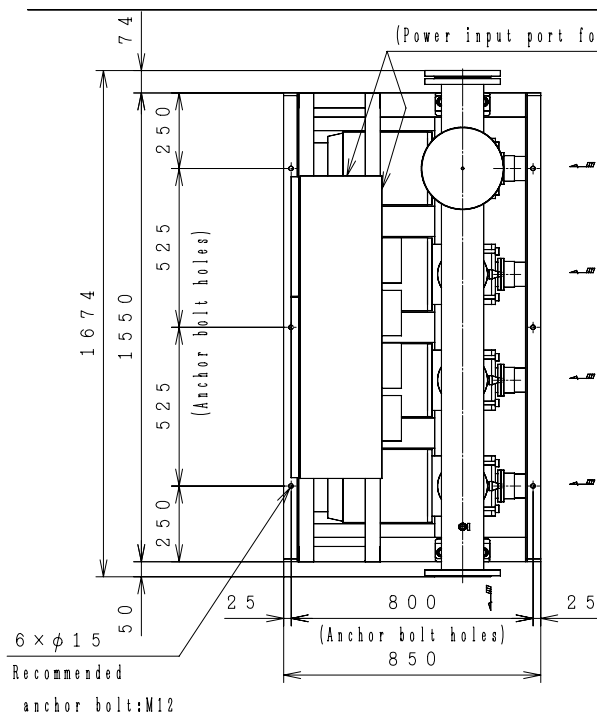


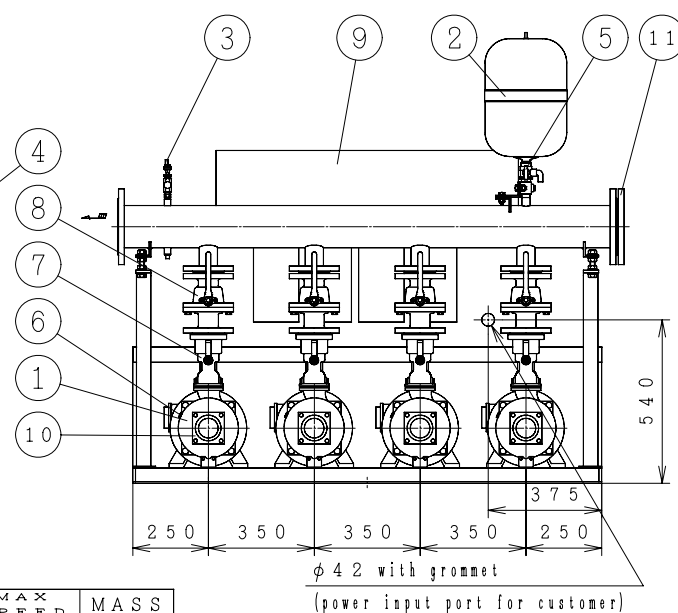
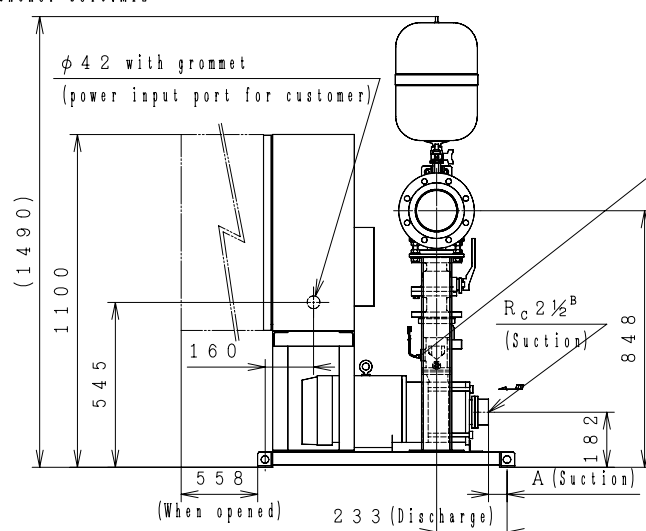
## Automatic Water Supply Units ASSEMBLY DRAWING

TYPE : NX - V F C

[Positive Section] [Constant Presumed Terminal Pressure Water Supply] [3-Pumps Parallel 4-Pumps Rotation]



No	Parts Name	Q'TY
1	Pump	4
2	Pressure tank (20L)	1
3	Pressure transmitter	1
4	Flow switch	4
5	TJ valve	1
6	Protector	4
7	Check valve (with flow switch)	4
8	Stop valve	4
9	Control panel	1
10	Special flange (Suction)	4
11	Blind Flange	1



MODEL	OUTPUT kW	A	MAX SPEED (400V) $\text{min}^{-1}$	MAX SPEED (380V) $\text{min}^{-1}$	MASS kg
NX-125VFC652-5.5T×4	5.5	61.5	3600	3540	578

Suction companion flange require the use of the special flanges accompanied with the product.  
 A tube of  $\phi 10\text{mm}$  (3/8") can be connected to TJ valve. (Control Panel Size 1000×650×350)

ACCESSORIES	

MASS kg

UNIT SPECIFICATION				MOTOR SPECIFICATION	
CAPACITY	$\text{m}^3/\text{min}$	SIZE	Suc. 65mm/Dis. 125mm	POLE	2 P
TOTAL HEAD	m	FREQUENCY	Hz	TYPE	T. E. F. C
MAX SPEED	$\text{min}^{-1}$	PHASE & VOLTAGE	3 $\phi$ V	OUTPUT	kW×3
ITEM NAME				ITEM No.	
MODEL				QUANTITY	