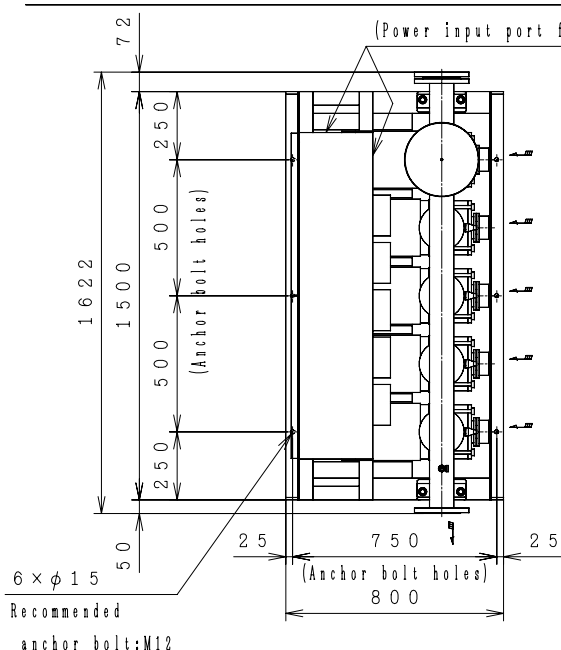
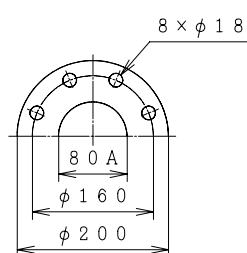


Automatic Water Supply Units ASSEMBLY DRAWING

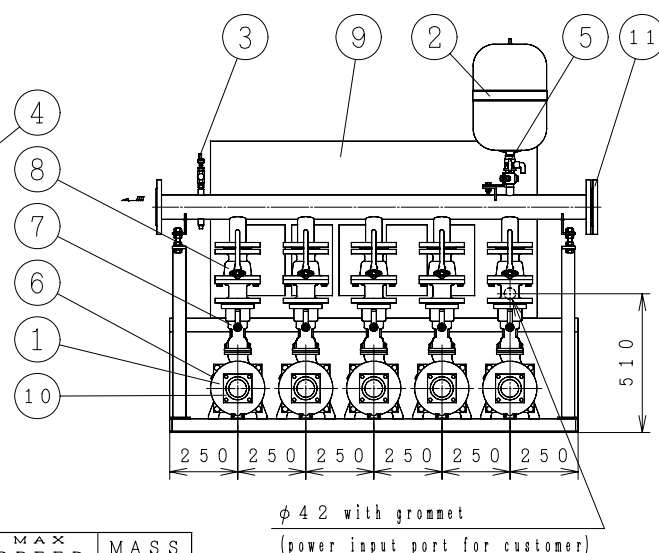
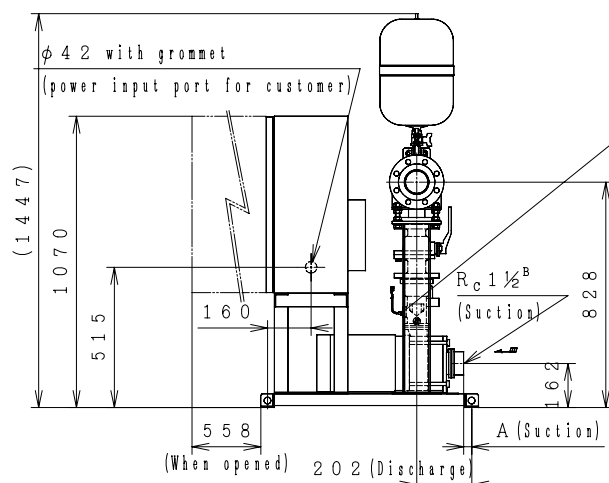
TYPE : NX - VFC [Positive Section] [Constant Presumed Terminal Pressure Water Supply] [4-Pumps Parallel 5-Pumps Rotation]



Dis. flange



No	Parts Name	Q'TY
1	Pump	5
2	Pressure tank(20ℓ)	1
3	Pressure transmitter	1
4	Flow switch	5
5	TJ valve	1
6	Protector	5
7	Check valve	5
	(with flow switch)	
8	Stop valve	5
9	Control panel	1
10	Special flange(Suction)	5
11	Blind Flange	1



MODEL	OUTPUT kW	A	MAX SPEED (400V) min ⁻¹	MAX SPEED (380V) min ⁻¹	MASS kg
NX-80VFC401-1.1F×5	1.1	111.5	3600	3540	503
NX-80VFC402-1.5F×5	1.5	64.5	3660	3600	520
NX-80VFC402-2.2F×5	2.2	64.5	3600	3540	531
NX-80VFC402-3.7F×5	3.7	64.5	3480	3420	573
NX-80VFC403-3.7F×5	3.7	17.5	3540	3480	586

Suction companion flange require the use of the special flanges accompanied with the product.
A tube of phi10mm (3/8") can be connected to TJ valve. (Control Panel Size 1200×650×350)

ACCESSORIES	

MASS kg

UNIT SPECIFICATION				MOTOR SPECIFICATION	
CAPACITY	m ³ /min	SIZE	Suc. 40mm/Dis. 80mm	POLE	2 P
TOTAL HEAD	m	FREQUENCY	Hz	TYPE	T. E. F. C
MAX SPEED	min ⁻¹	PHASE&VOLTAGE	3 phi V	OUTPUT	kW×4

ITEM NAME		ITEM No.	
MODEL		QUANTITY	