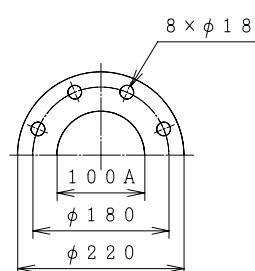
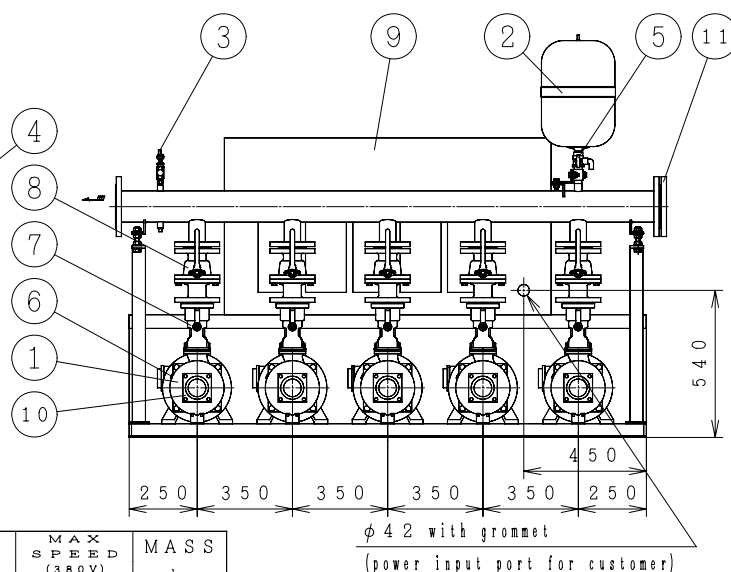


[Positive Suction] [Constant Presumed Terminal Pressure Water Supply] [4-Pumps Parallel 5-Pumps Rotation]



Technical drawing of the R2B (Suction) model, showing a side view of the pump assembly. The drawing includes dimensions for height (1100, 545, 160, 182, 848), width (558, 233), and a note for the power input port (φ 42 with grommet). The drawing is labeled "Rc 2B (Suction)" and "A (Suction)".



Suction companion flange require the use of the special flanges accompanied with the product.  
A tube of  $\phi 10\text{mm}$  (3/8") can be connected to TJ valve. (Control Panel Size 1200x650x350)

MASS kg

I T E M   N A M E	I T E M   N o .
M O D E L	Q U A N T I T Y