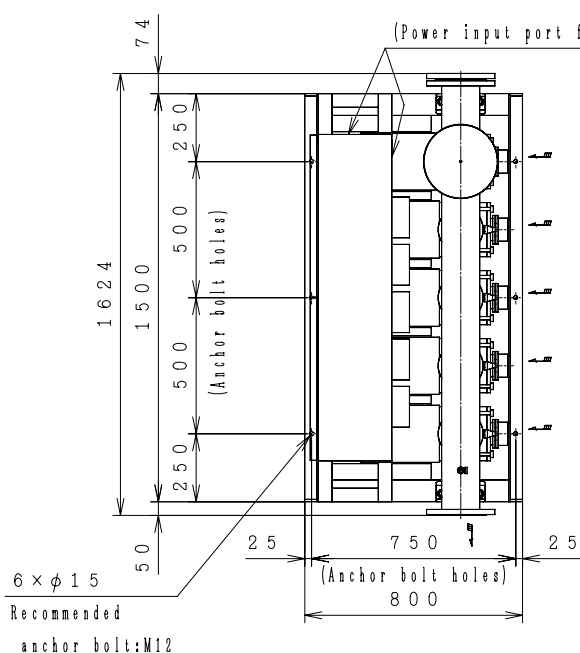


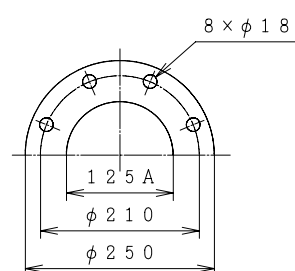
## Automatic Water Supply Units ASSEMBLY DRAWING

TYPE : NX - VFC

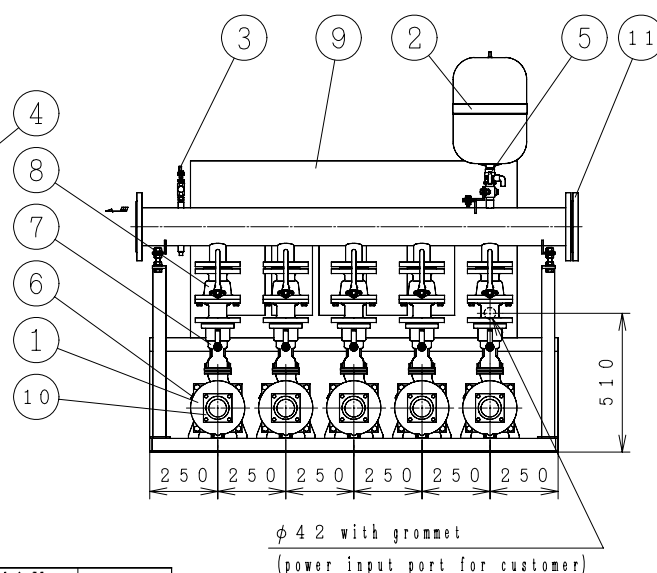
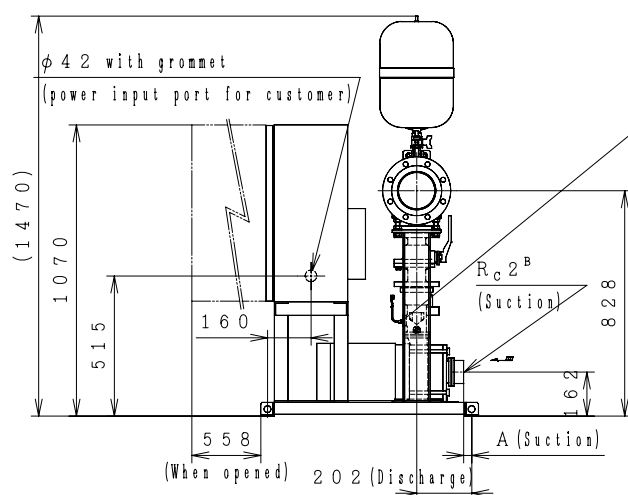
[Positive Section] [Constant Presumed Terminal Pressure Water Supply] [5-Pumps Parallel 5-Pumps Rotation]



Dis. flange



No	Parts Name	Q'TY
1	Pump	5
2	Pressure tank (20L)	1
3	Pressure transmitter	1
4	Flow switch	5
5	TJ valve	1
6	Protector	5
7	Check valve (with flow switch)	5
8	Stop valve	5
9	Control panel	1
10	Special flange (Suction)	5
11	Blind Flange	1



MODEL	OUTPUT kW	A	MAX SPEED (400V) min <sup>-1</sup>	MAX SPEED (380V) min <sup>-1</sup>	MASS kg
NX-125VFC502-2.2G×5	2.2	60.5	3540	3480	549
NX-125VFC502-3.7G×5	3.7	60.5	3600	3540	589

Suction companion flange require the use of the special flanges accompanied with the product.  
 A tube of  $\phi 10\text{mm}$  (3/8") can be connected to TJ valve. (Control Panel Size 1200×650×350)

ACCESSORIES	

MASS kg

UNIT SPECIFICATION				MOTOR SPECIFICATION	
CAPACITY	m <sup>3</sup> /min	SIZE	Suc. 50mm/Dis. 125mm	POLE	2 P
TOTAL HEAD	m	FREQUENCY	Hz	TYPE	T. E. F. C
MAX SPEED	min <sup>-1</sup>	PHASE&VOLTAGE	3 $\phi$ V	OUTPUT	kW×5
ITEM NAME				ITEM No.	
MODEL				QUANTITY	