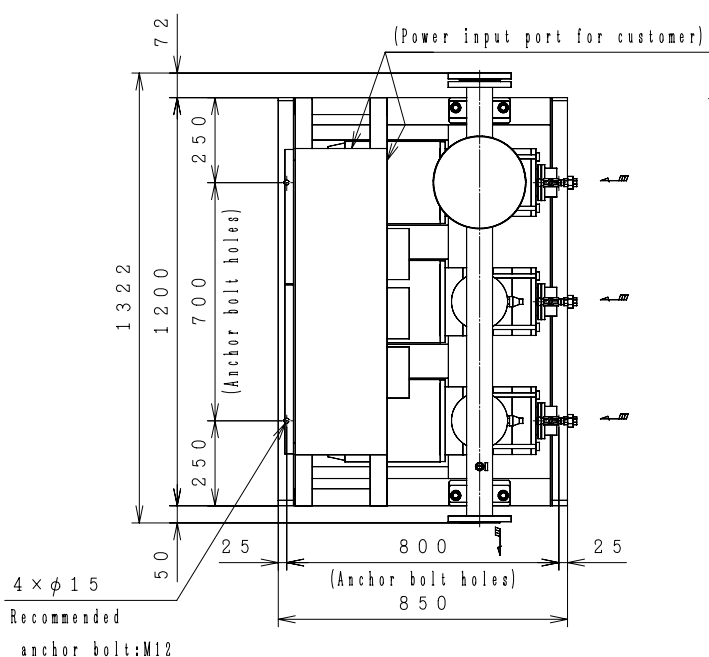
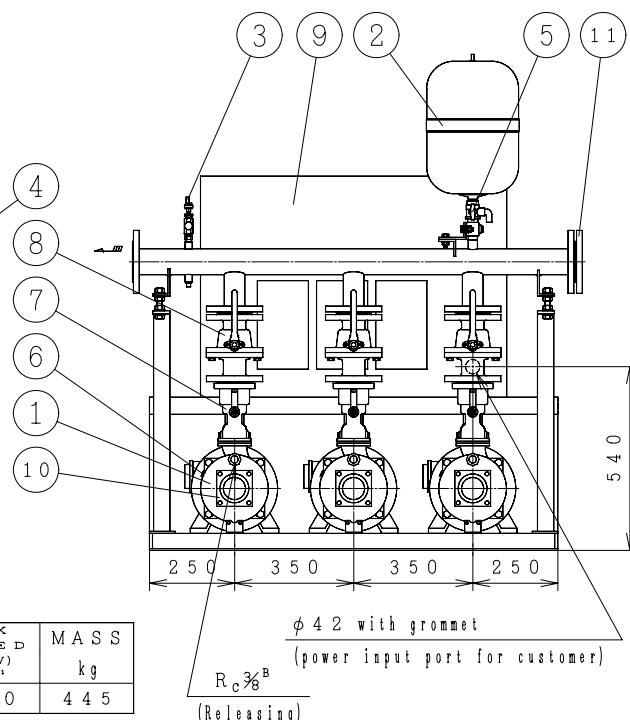
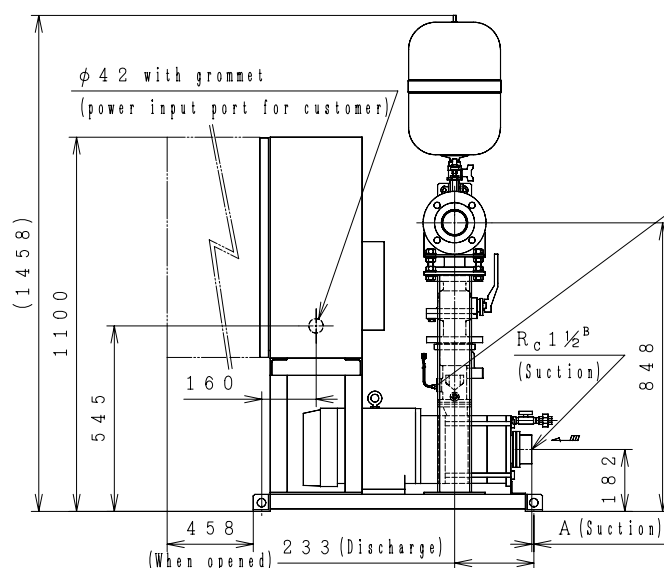


Automatic Water Supply Units ASSEMBLY DRAWING

TYPE : NX - VFC [Negative Section] [Constant Presumed Terminal Pressure Water Supply] [2-Pumps Parallel 3-Pumps Rotation]



No	Parts Name	Q'TY
1	Pump	3
2	Pressure tank (20L)	1
3	Pressure transmitter	1
4	Flow switch	3
5	TJ valve	1
6	Protector	3
7	Check valve (with flow switch)	3
8	Stop valve	3
9	Control panel	1
10	Special flange (Suction)	3
11	Blind Flange	1



MODEL	OUTPUT kW	A	MAX SPEED (400V) min^{-1}	MAX SPEED (380V) min^{-1}	MASS kg
NX-65VFC403-5.5W×3	5.5	48.5	3600	3540	445

Negative Section

Suction companion flange require the use of the special flanges accompanied with the product.
A tube of $\phi 10\text{mm}$ (3/8") can be connected to TJ valve.

(Control Panel Size 900×650×350)

ACCESSORIES	

MASS kg

UNIT SPECIFICATION				MOTOR SPECIFICATION	
CAPACITY	m^3/min	SIZE	Suc. 40mm/Dis. 65mm	POLE	2 P
TOTAL HEAD	m	FREQUENCY	Hz	TYPE	T. E. F. C
MAX SPEED	min^{-1}	PHASE&VOLTAGE	3 ϕ V	OUTPUT	kW×2

ITEM NAME		ITEM No.	
MODEL		QUANTITY	