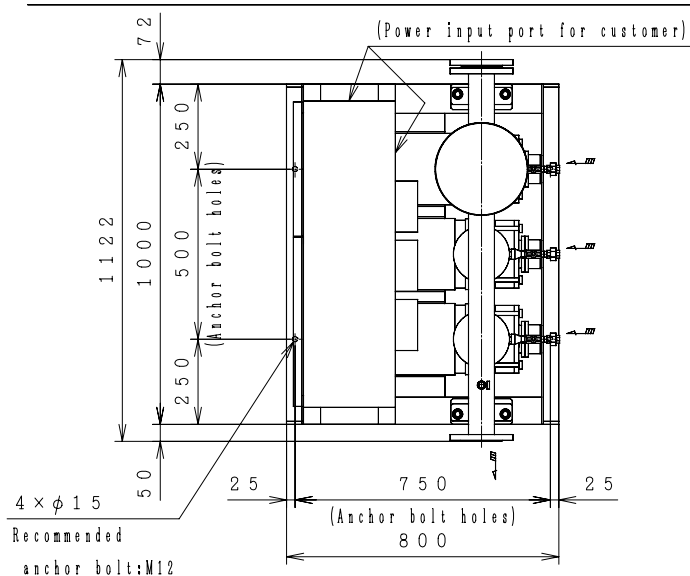
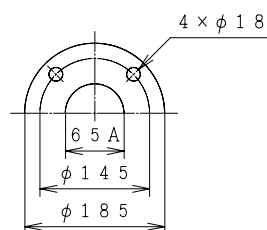


## Automatic Water Supply Units ASSEMBLY DRAWING

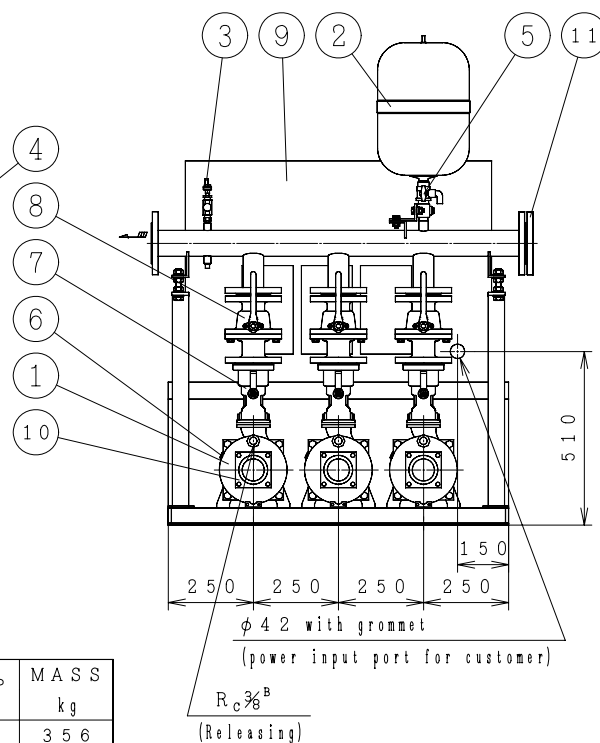
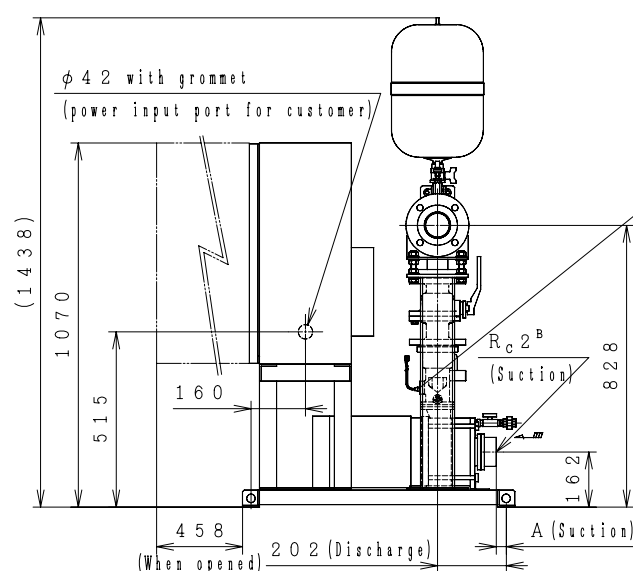
TYPE : NX-VFC [Negative Suction] [Constant Presumed Terminal Pressure Water Supply] [2-Pumps Parallel 3-Pumps Rotation]



Dis. flange



No	Parts Name	Q'TY
1	Pump	3
2	Pressure tank (20L)	1
3	Pressure transmitter	1
4	Flow switch	3
5	TJ valve	1
6	Protector	3
7	Check valve (with flow switch)	3
8	Stop valve	3
9	Control panel	1
10	Special flange (Suction)	3
11	Blind Flange	1



MODEL	OUTPUT kW	A	MAX SPEED (400V) min <sup>-1</sup>	MAX SPEED (380V) min <sup>-1</sup>	MASS kg
NX-65VFC502-2.2W×3	2.2	60.5	3540	3480	356
NX-65VFC502-3.7W×3	3.7	60.5	3600	3540	381

Negative Suction

Suction companion flange require the use of the special flanges accompanied with the product.

A tube of  $\phi 10\text{mm}$  (3/8") can be connected to TJ valve.

(Control Panel Size 900×650×350)

ACCESSORIES	

MASS kg

UNIT SPECIFICATION				MOTOR SPECIFICATION	
CAPACITY	m <sup>3</sup> /min	SIZE	Suc. 50mm/Dis. 65mm	POLE	2 P
TOTAL HEAD	m	FREQUENCY	Hz	TYPE	T. E. F. C
MAX SPEED	min <sup>-1</sup>	PHASE&VOLTAGE	3 $\phi$ V	OUTPUT	kW×2
ITEM NAME				ITEM No.	
MODEL				QUANTITY	