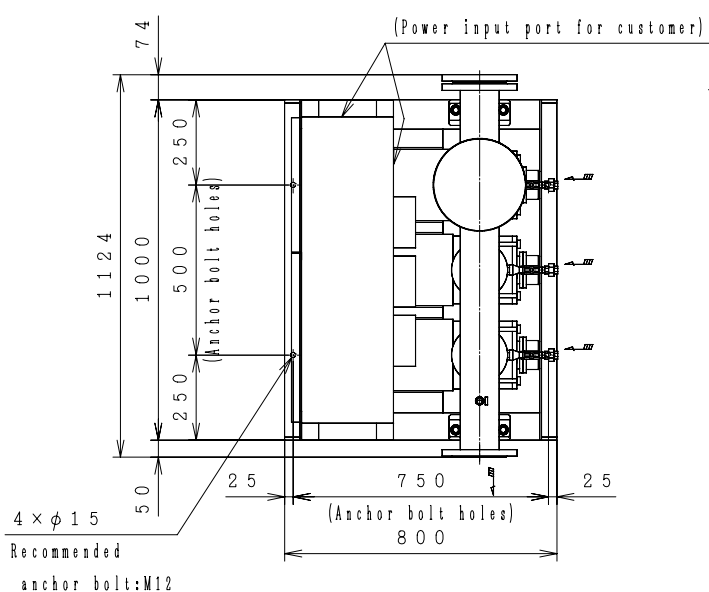


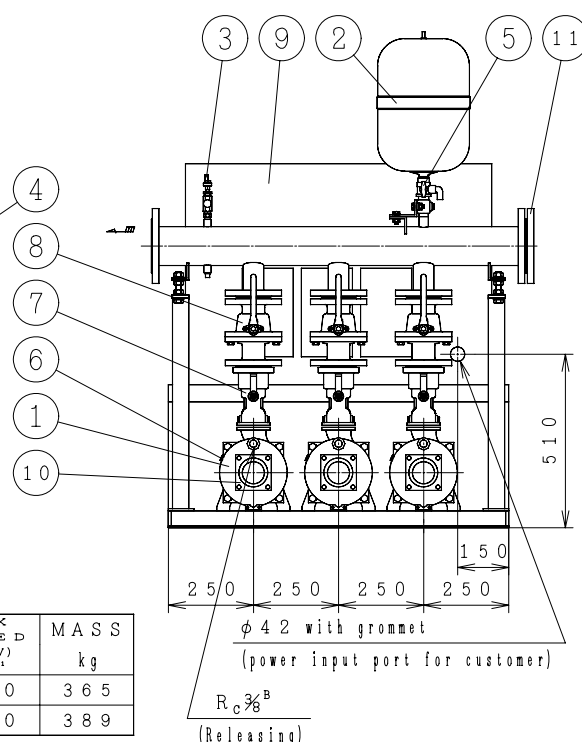
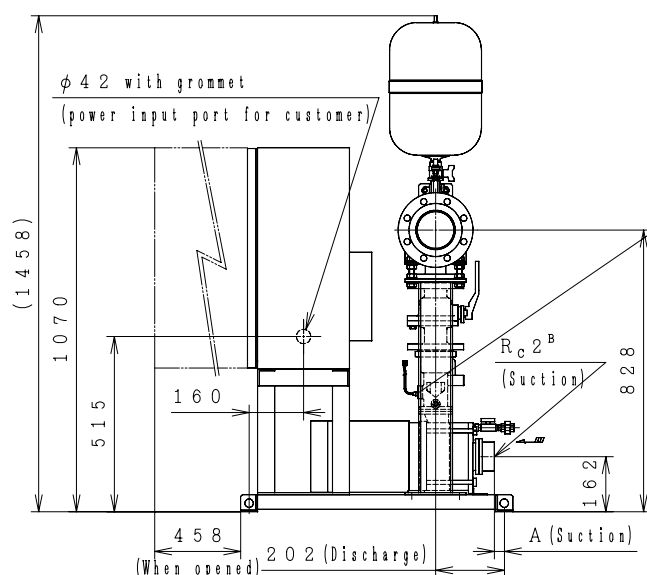
Automatic Water Supply Units ASSEMBLY DRAWING

TYPE : NX - VFC

[Negative Section] [Constant Presumed Terminal Pressure Water Supply] [3-Pumps Parallel 3-Pumps Rotation]



No	Parts Name	Q'TY
1	Pump	3
2	Pressure tank (20ℓ)	1
3	Pressure transmitter	1
4	Flow switch	3
5	TJ valve	1
6	Protector	3
7	Check valve (with flow switch)	3
8	Stop valve	3
9	Control panel	1
10	Special flange (Suction)	3
11	Blind Flange	1



MODEL	OUTPUT kW	A	MAX SPEED (400V) min ⁻¹	MAX SPEED (380V) min ⁻¹	MASS kg
NX-100VFC502-2.2T×3	2.2	60.5	3540	3480	365
NX-100VFC502-3.7T×3	3.7	60.5	3600	3540	389

Negative Section

Suction companion flange require the use of the special flanges accompanied with the product.

A tube of φ10mm (3/8") can be connected to TJ valve.

(Control Panel Size 900×650×350)

ACCESSORIES	

MASS kg

UNIT SPECIFICATION				MOTOR SPECIFICATION	
CAPACITY	m ³ /min	SIZE	Suc. 50mm/Dis. 100mm	POLE	2 P
TOTAL HEAD	m	FREQUENCY	Hz	TYPE	T. E. F. C
MAX SPEED	min ⁻¹	PHASE&VOLTAGE	3 φ V	OUTPUT	kW×3
ITEM NAME		ITEM No.			
MODEL		QUANTITY			