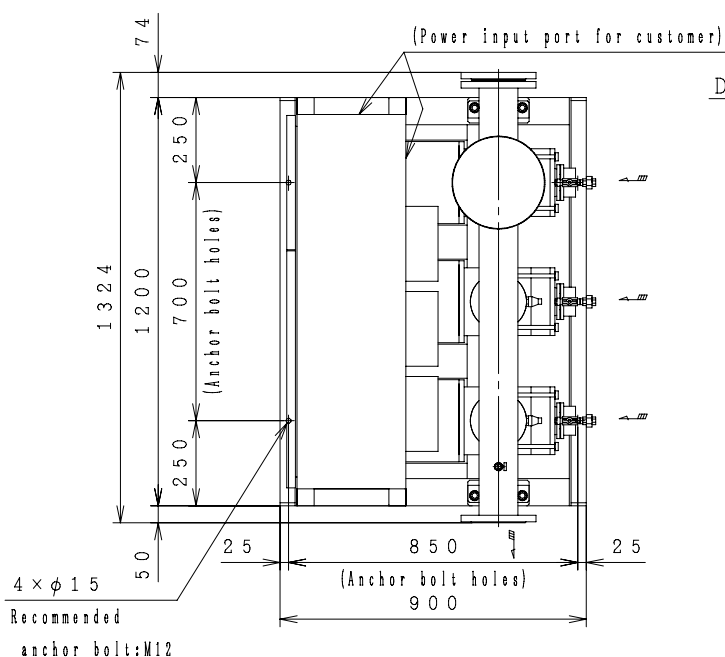
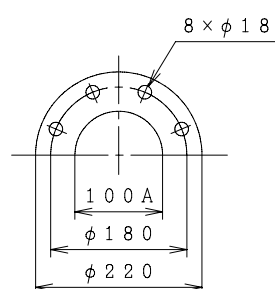


## Automatic Water Supply Units ASSEMBLY DRAWING

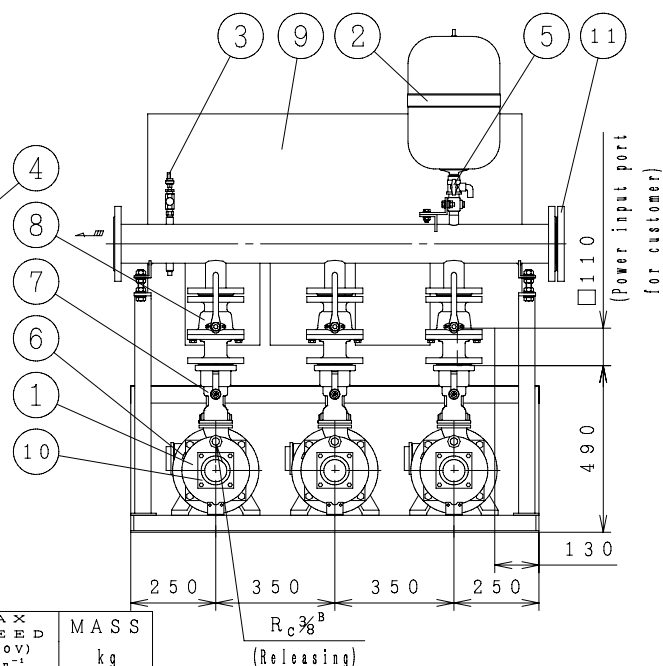
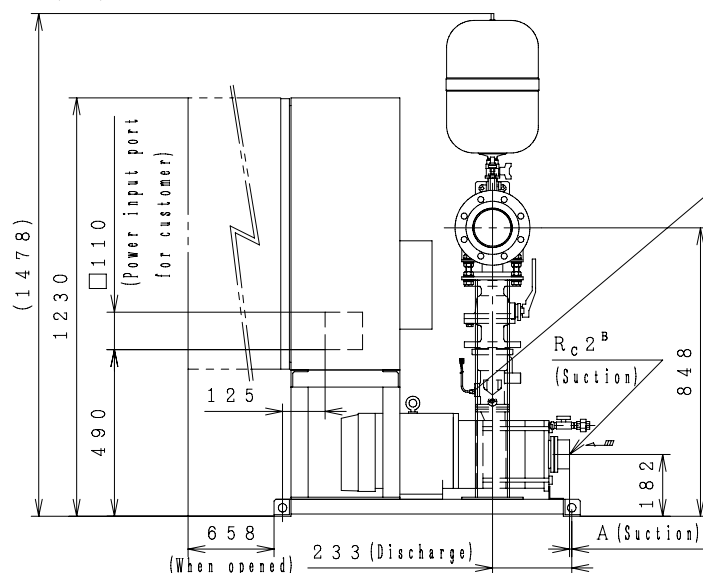
TYPE : NX - VFC [Negative Section] [Constant Presumed Terminal Pressure Water Supply] [3-Pumps Parallel 3-Pumps Rotation]



Dis. flange



| No | Parts Name                     | Q'TY |
|----|--------------------------------|------|
| 1  | Pump                           | 3    |
| 2  | Pressure tank (20L)            | 1    |
| 3  | Pressure transmitter           | 1    |
| 4  | Flow switch                    | 3    |
| 5  | TJ valve                       | 1    |
| 6  | Protector                      | 3    |
| 7  | Check valve (with flow switch) | 3    |
| 8  | Stop valve                     | 3    |
| 9  | Control panel                  | 1    |
| 10 | Special flange (Suction)       | 3    |
| 11 | Blind Flange                   | 1    |



| MODEL               | OUTPUT<br>kW | A    | MAX<br>SPEED<br>(400V)<br>min <sup>-1</sup> | MAX<br>SPEED<br>(380V)<br>min <sup>-1</sup> | MASS<br>kg |
|---------------------|--------------|------|---|---|------------|
| NX-100VFC503-7.5T×3 | 7.5          | 44.5 | 3600  | 3540  | 496        |

Negative Section

Suction companion flange require the use of the special flanges accompanied with the product.

A tube of  $\phi 10\text{mm}$  (3/8") can be connected to TJ valve.

(Control Panel Size 1100×800×350)

| ACCESSORIES |  |
|-------------|--|
|             |  |
|             |  |
|             |  |
|             |  |

MASS kg

| UNIT SPECIFICATION |                     |               |                      | MOTOR SPECIFICATION |            |
|--------------------|---------------------|---------------|----------------------|---------------------|------------|
| CAPACITY           | m <sup>3</sup> /min | SIZE          | Suc. 50mm/Dis. 100mm | POLE                | 2 P        |
| TOTAL HEAD         | m                   | FREQUENCY     | Hz                   | TYPE                | T. E. F. C |
| MAX SPEED          | min <sup>-1</sup>   | PHASE&VOLTAGE | 3 $\phi$ V           | OUTPUT              | kW×3       |
| ITEM NAME          |                     |               |                      | ITEM No.            |            |
| MODEL              |                     |               |                      | QUANTITY            |            |