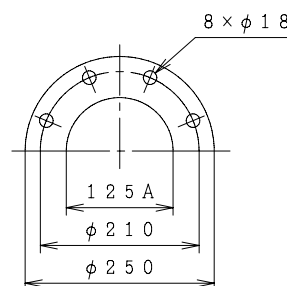
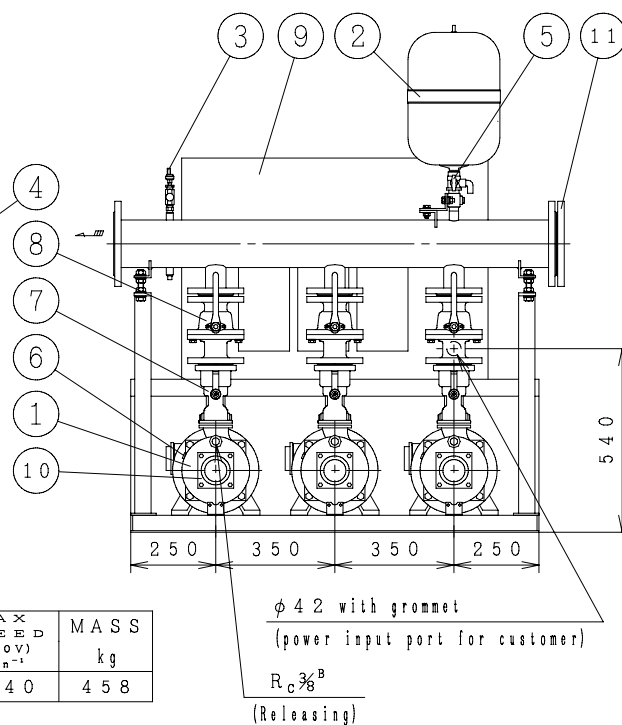
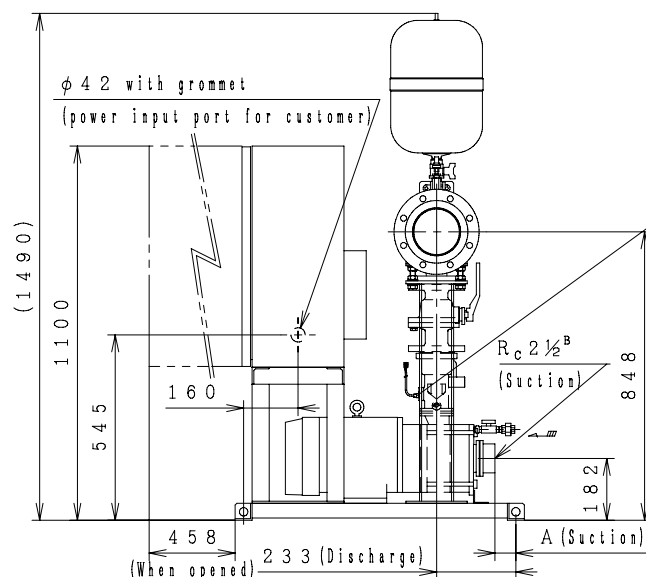


[Negative Suction] [Constant Presumed Terminal Pressure Water Supply] [3-Pumps Parallel 3-Pumps Rotation]



| No | Parts Name | Q'Ty |
|----|-----------------------------------|------|
| 1 | Pump | 3 |
| 2 | Pressure tank (200) | 1 |
| 3 | Pressure transmitter | 1 |
| 4 | Flow switch | 3 |
| 5 | TJ valve | 1 |
| 6 | Protector | 3 |
| 7 | Check valve (with flow switch) | 3 |
| 8 | Stop valve | 3 |
| 9 | Control panel | 1 |
| 10 | Special flange (Suction) | 3 |
| 11 | Blind Flange | 1 |

Negative Suction

Suction companion flange require the use of the special flanges accompanied with the product. A tube of $\phi 10\text{mm}$ (3/8") can be connected to TJ valve. (Control Panel Size 900x650x350)

MASS kg

MOTOR SPECIFICATION

| ITEM | No. |
|------|-----|
|------|-----|