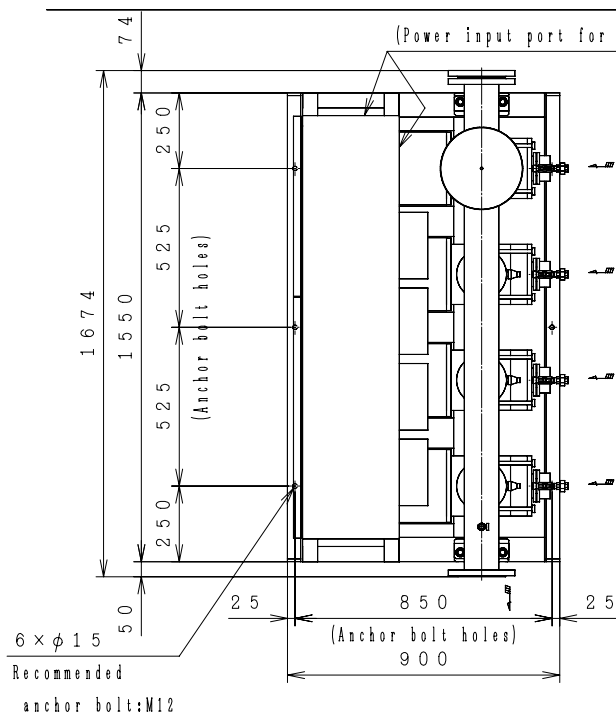
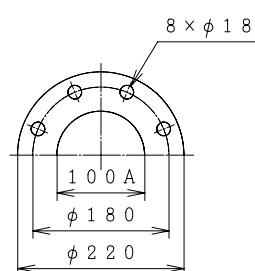


Automatic Water Supply Units ASSEMBLY DRAWING

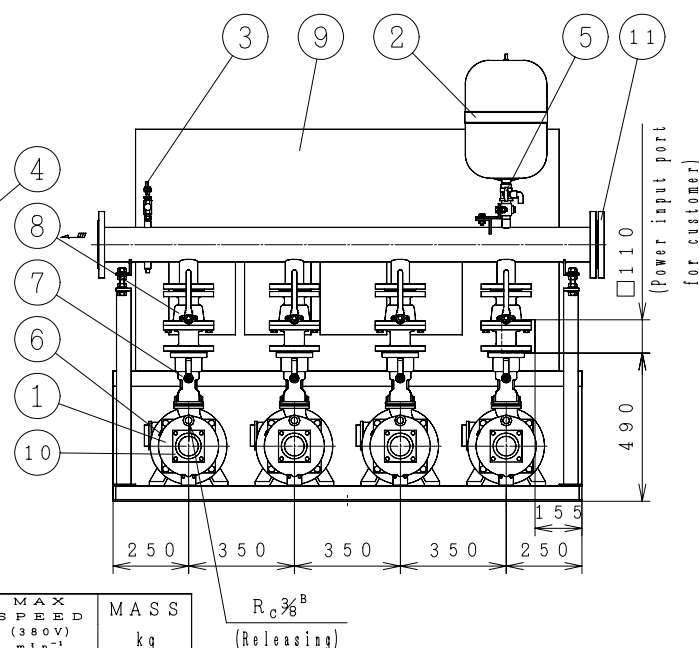
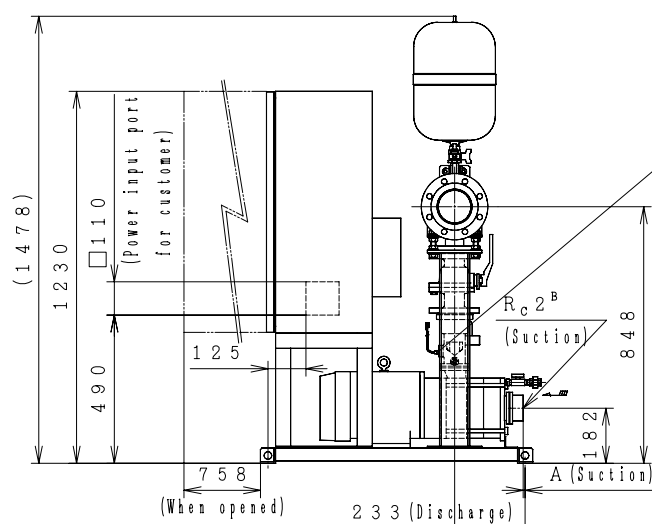
TYPE : NX-VFC [Negative Suction] [Constant Presumed Terminal Pressure Water Supply] [3-Pumps Parallel 4-Pumps Rotation]



Dis. flange



| No | Parts Name | Q'TY |
|----|--------------------------------|------|
| 1 | Pump | 4 |
| 2 | Pressure tank (20L) | 1 |
| 3 | Pressure transmitter | 1 |
| 4 | Flow switch | 4 |
| 5 | TJ valve | 1 |
| 6 | Protector | 4 |
| 7 | Check valve (with flow switch) | 4 |
| 8 | Stop valve | 4 |
| 9 | Control panel | 1 |
| 10 | Special flange (Suction) | 4 |
| 11 | Blind Flange | 1 |



| MODEL | OUTPUT kW | A | MAX SPEED (400V) min ⁻¹ | MAX SPEED (380V) min ⁻¹ | MASS kg |
|---------------------|--------------|------|---------------------------------------------|---------------------------------------------|------------|
| NX-100VFC503-7.5T×4 | 7.5 | 44.5 | 3600 | 3540 | 618 |

Negative Suction

Suction companion flange require the use of the special flanges accompanied with the product.

A tube of $\phi 10\text{mm}$ (3/8") can be connected to TJ valve.

(Control Panel Size 1400×800×350)

| ACCESSORIES | |
|-------------|--|
| | |
| | |
| | |
| | |

MASS kg

| UNIT SPECIFICATION | | | | MOTOR SPECIFICATION | |
|--------------------|---------------------|---------------|----------------------|---------------------|------------|
| CAPACITY | m ³ /min | SIZE | Suc. 50mm/Dis. 100mm | POLE | 2 P |
| TOTAL HEAD | m | FREQUENCY | Hz | TYPE | T. E. F. C |
| MAX SPEED | min ⁻¹ | PHASE&VOLTAGE | 3 ϕ V | OUTPUT | kW×3 |
| ITEM NAME | | | | ITEM No. | |
| MODEL | | | | QUANTITY | |