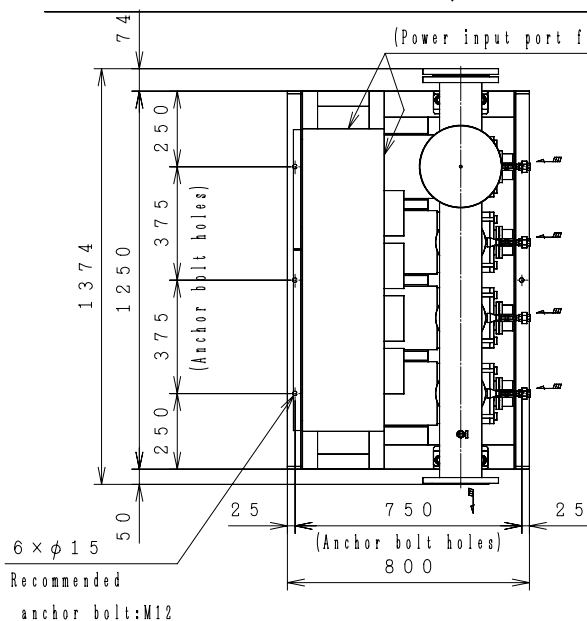
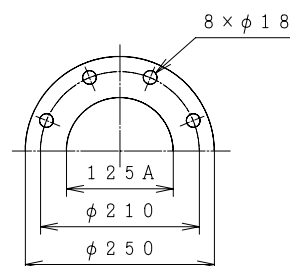


Automatic Water Supply Units ASSEMBLY DRAWING

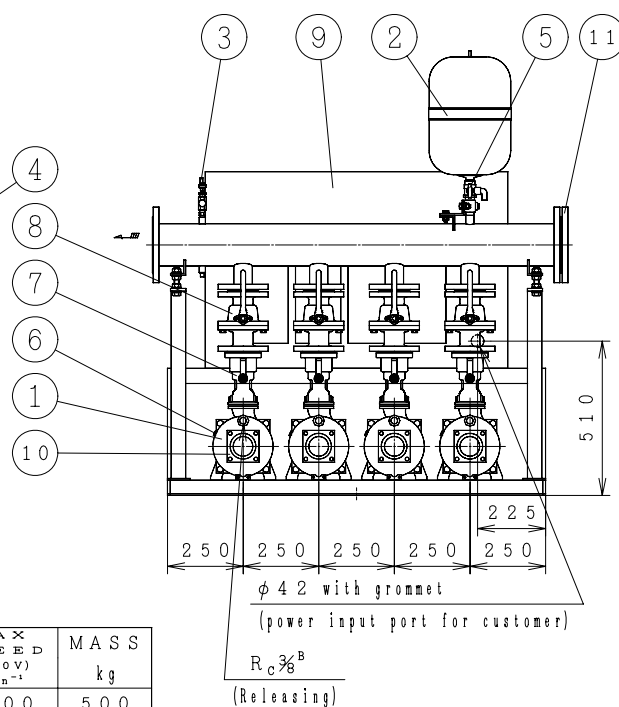
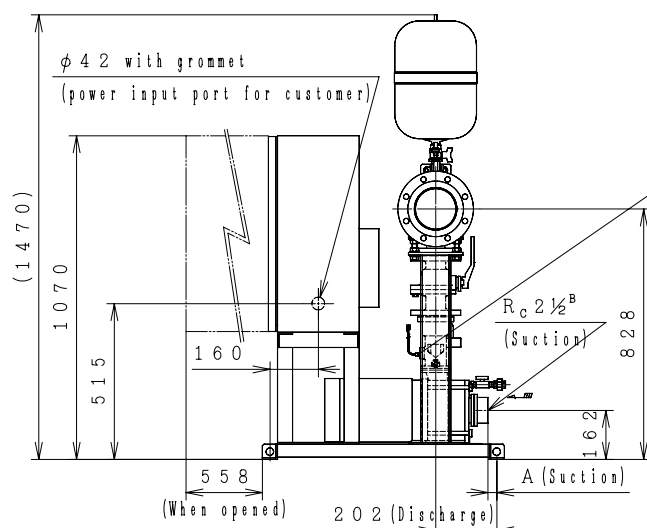
TYPE : NX-VFC [Negative Section] [Constant Presumed Terminal Pressure Water Supply] [4-Pumps Parallel 4-Pumps Rotation]



Dis. flange



No	Parts Name	Q'TY
1	Pump	4
2	Pressure tank(20ℓ)	1
3	Pressure transmitter	1
4	Flow switch	4
5	TJ valve	1
6	Protector	4
7	Check valve (with flow switch)	4
8	Stop valve	4
9	Control panel	1
10	Special flange(Suction)	4
11	Blind Flange	1



MODEL	OUTPUT kW	A	MAX SPEED (400V) min^{-1}	MAX SPEED (380V) min^{-1}	MASS kg
NX-125VFC652-3.7F×4	3.7	30.5	3660	3600	500

Negative Suction

Suction companion flange require the use of the special flanges accompanied with the product.

A tube of $\phi 10\text{mm}$ (3/8") can be connected to TJ valve.

(Control Panel Size 1000×650×350)

ACCESSORIES	

MASS kg

UNIT SPECIFICATION				MOTOR SPECIFICATION	
CAPACITY	m^3/min	SIZE	Suc. 65mm/Dis. 125mm	POLE	2 P
TOTAL HEAD	m	FREQUENCY	Hz	TYPE	T. E. F. C
MAX SPEED	min^{-1}	PHASE&VOLTAGE	3 ϕ V	OUTPUT	kW×4
ITEM NAME				ITEM No.	
MODEL				QUANTITY	