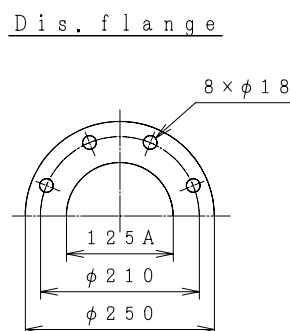
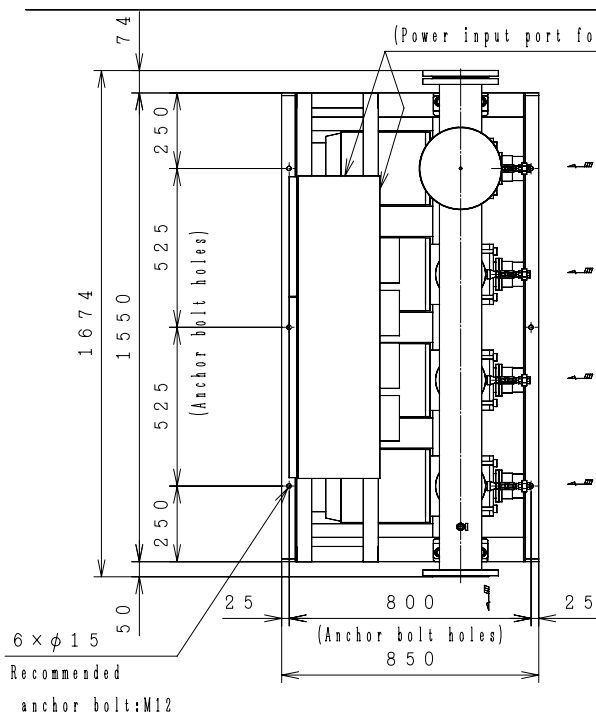


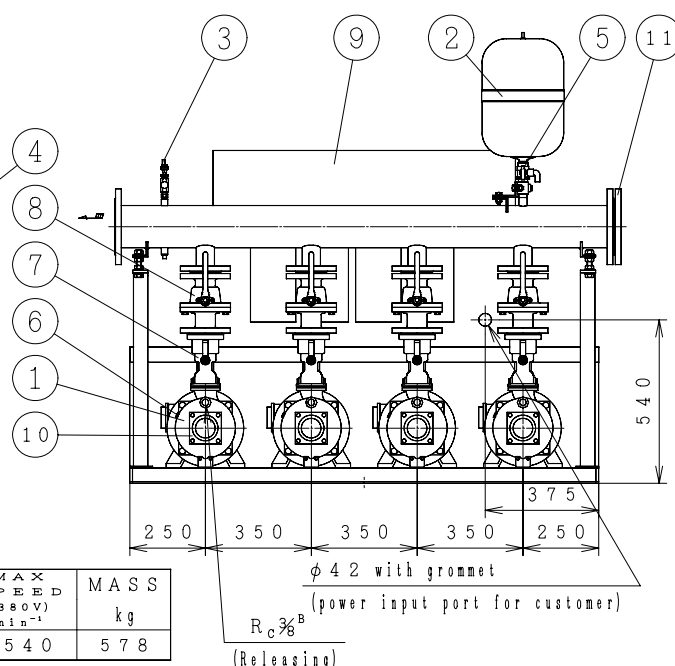
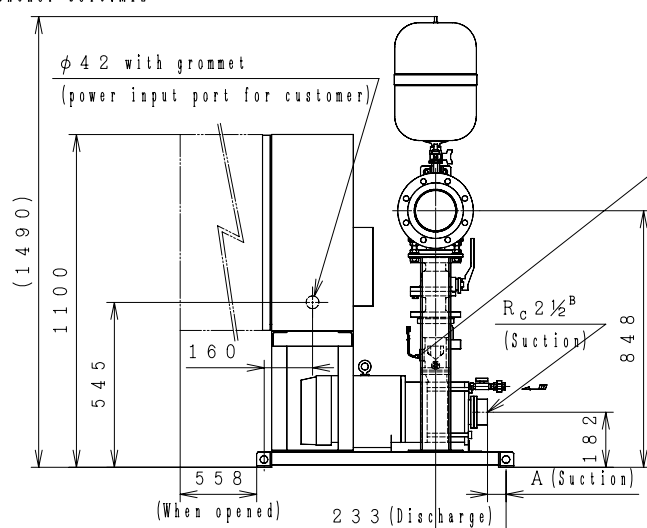
Automatic Water Supply Units ASSEMBLY DRAWING

TYPE : NX-VFC

[Negative Suction] [Constant Presumed Terminal Pressure Water Supply] [4-Pumps Parallel 4-Pumps Rotation]



No	Parts Name	Q'Ty
1	Pump	4
2	Pressure tank (20ℓ)	1
3	Pressure transmitter	1
4	Flow switch	4
5	TJ valve	1
6	Protector	4
7	Check valve (with flow switch)	4
8	Stop valve	4
9	Control panel	1
10	Special flange (Suction)	4
11	Blind Flange	1



MODEL	OUTPUT kW	A	MAX SPEED (400V) min ⁻¹	MAX SPEED (380V) min ⁻¹	MASS kg
NX-125VFC652-5.5F×4	5.5	61.5	3600	3540	578

Negative Suction

Suction companion flange require the use of the special flanges accompanied with the product.

A tube of $\phi 10\text{mm}$ ($3/8'$) can be connected to TJ valve.

(Control Panel Size 1000×650×350)

ACCESSORIES	

M A S S
k g

UNIT SPECIFICATION				MOTOR SPECIFICATION	
CAPACITY	m ³ /min	SIZE	Suc.65mm/Dis.125mm	POLE	2 P
TOTAL HEAD	m	FREQUENCY	H z	TYPE	T. E. F. C
MAX SPEED	min ⁻¹	PHASE&VOLTAGE	3 φ V	OUTPUT	k W×4

I T E M N A M E	I T E M N o .
M O D E L	Q U A N T I T Y