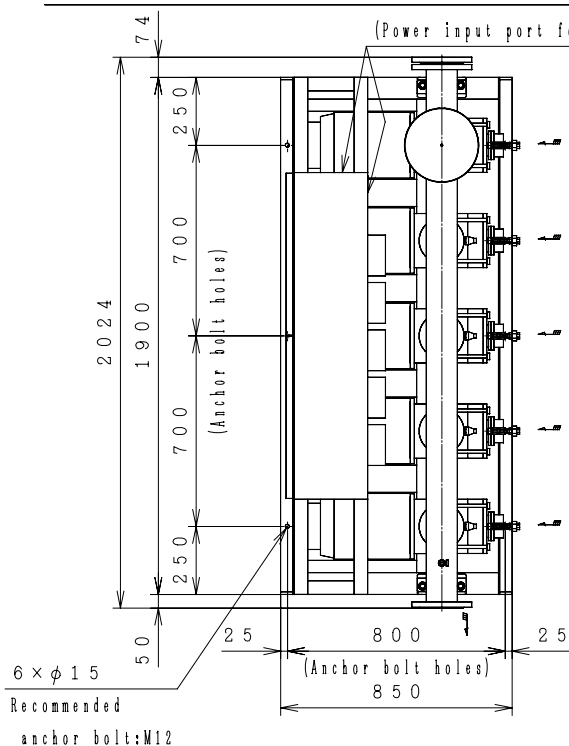
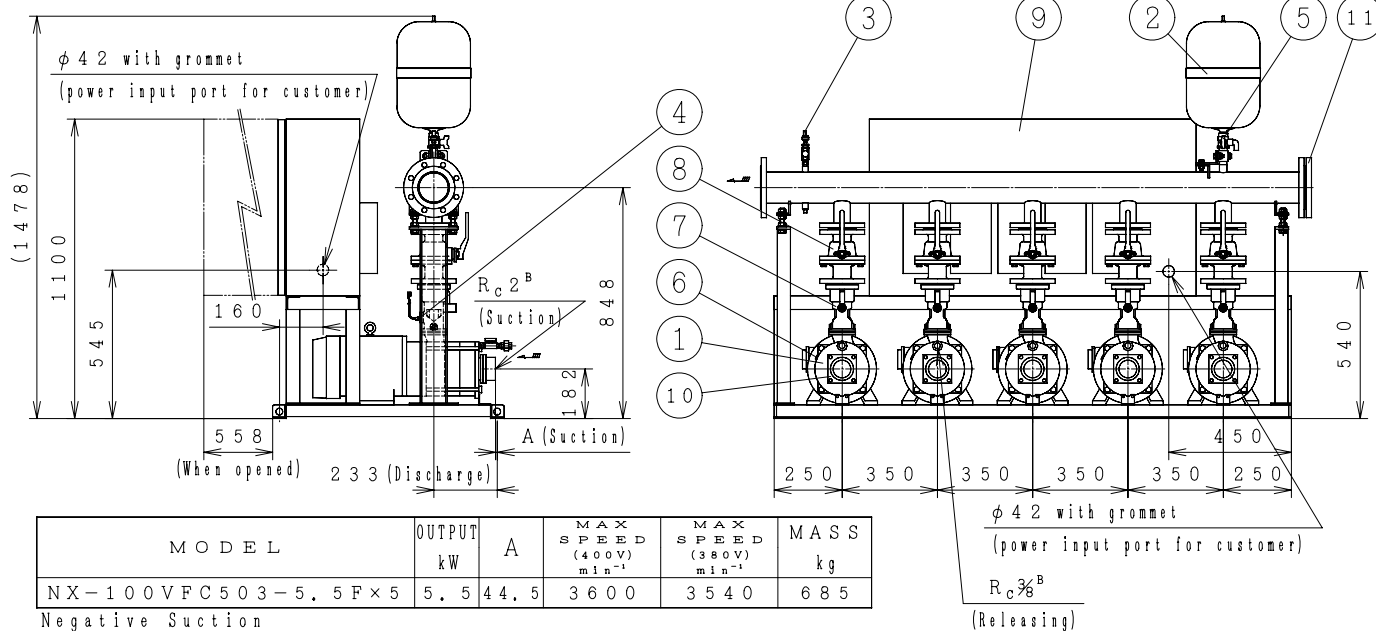


## Automatic Water Supply Units ASSEMBLY DRAWING

TYPE : NX-VFC [Negative Section] [Constant Presumed Terminal Pressure Water Supply] [4-Pumps Parallel 5-Pumps Rotation]



No	Parts Name	Q'TY
1	Pump	5
2	Pressure tank(20ℓ)	1
3	Pressure transmitter	1
4	Flow switch	5
5	TJ valve	1
6	Protector	5
7	Check valve (with flow switch)	5
8	Stop valve	5
9	Control panel	1
10	Special flange(Suction)	5
11	Blind Flange	1



MODEL	OUTPUT kW	A	MAX SPEED (400V) $\text{min}^{-1}$	MAX SPEED (380V) $\text{min}^{-1}$	MASS kg
NX-100VFC503-5.5F×5	5.5	44.5	3600	3540	685

Negative Suction

Suction companion flange require the use of the special flanges accompanied with the product.

A tube of  $\phi 10\text{mm}$  (3/8") can be connected to TJ valve.

(Control Panel Size 1200×650×350)

ACCESSORIES	

MASS kg

UNIT SPECIFICATION				MOTOR SPECIFICATION	
CAPACITY	$\text{m}^3/\text{min}$	SIZE	Suc. 50mm/Dis. 100mm	POLE	2 P
TOTAL HEAD	m	FREQUENCY	Hz	TYPE	T. E. F. C
MAX SPEED	$\text{min}^{-1}$	PHASE&VOLTAGE	3 $\phi$ V	OUTPUT	kW×4
ITEM NAME				ITEM No.	
MODEL				QUANTITY	