

Line pumps

LP/LPE

TERAL



Triple e series

60Hz



TERAL INC.

Applications

- Circulation of cold/warm water
- Pressurization of tap water
- Cooling and air-conditioning systems
- Pressurization of industrial water
- General water supply
- Other uses

Features

- ① Energy-saving pump with a Top Runner efficiency (equivalent to IE3) motor.
(Excluding pumps of single-phase and 3-phase 0.15kW or less. Pumps of 3-phase 0.25 to 0.4kW are our high efficiency standard products.)
- ② Installable in the middle of piping, and does not require large installation space.
- ③ Compact, lightweight, and easy-to-handle because disassembly and inspection can be performed without removing piping.
- ④ No water leakage through the adoption of a mechanical seal.
- ⑤ Usable for high-temperature and high-pressure water, and suitable as a circulating pump of cold/warm water.
- ⑥ Easy maintenance (Nominal diameter : 125~200mm)
When replacing the mechanical seal, no need to disassemble the pump or to remove the motor. LPE model achieves less work time than the conventional type.
- ⑦ Capable of high back pressure spec (Nominal diameter : 125~200mm)
Allowable boost pressure up to 1.6MPa supported by simple and high-rigidity structure based on rational design.
- ⑧ Space-saving (Nominal diameter : 125~200mm)
Installable in places where horizontal pumps would be hard to install. The installation area is approx. 50% compared with our SJ4-e and SKJ-e models of horizontal pumps having comparable output.
- ⑨ High efficiency of pump (nominal diameter: 125~200mm)
Increase in efficiency by 5 to 10% from conventional pumps by optimum design based on three-dimensional flow analysis and structural analysis.
- ⑩ Compatible mounting dimension with conventional pumps.
(Some LPE models require special accessory.)



* Please note that some of the devices in the photo may differ from actual devices in coating color, etc.

Description of types

LP 32 A 6 .75 - e

- | | | | | | | |
|--------------------|---|---|---|---|---|---|
| ① | ② | ③ | ④ | ⑤ | ⑥ | ⑦ |
| ① Model | | | | | | |
| ② Bore diameter | | | | | | |
| ③ Type | | | | | | |
| ④ Frequency | 5 : 50Hz
6 : 60Hz | | | | | |
| ⑤ Output | | | | | | |
| ⑥ Phase | S : single-phase
None: 3-phase | | | | | |
| ⑦ Motor efficiency | None: Standard efficiency (equivalent to IE1)
e: Top Runner efficiency (equivalent to IE3) | | | | | |

LPE 150 K - 6 15 - e

- | | | | | | |
|--------------------|---|---|---|---|---|
| ① | ② | ③ | ④ | ⑤ | ⑥ |
| ① Model | | | | | |
| ② Bore diameter | | | | | |
| ③ Type | | | | | |
| ④ Frequency | 5 : 50Hz
6 : 60Hz | | | | |
| ⑤ Output | | | | | |
| ⑥ Motor efficiency | Top Runner efficiency (equivalent to IE3) | | | | |

Standard specifications

●Nominal diameter: 25~100mm

Pumping liquid	Liquid quality	Fresh water
	Liquid temperature	0~90°C...(0.15kW or less) 0~80°C...(0.25kW or more) *1
Total suction head (In case of 20°C)		-6m *2 For use with the total head 10m or less, take 60% or less of the total head.
Allowable positive pressure		See the specification table.
Structure	Impeller	Closed
	Shaft seal	Mechanical seal
	Bearing	Sealed ball bearing
Material *3	Impeller	CAC406 *4
	Shaft	SUS304 (3-phase). See the table below.
		SUS304 (single-phase, 0.25kW, 0.4kW)
	Casing	FC200
Motor	Efficiency	Standard efficiency (equivalent to IE1): Single-phase, 3-phase 0.15kW or less Top Runner efficiency (equivalent to IE3): 3-phase 0.25kW or more
	Type	Totally enclosed self-cooled outdoor type: Single-phase 0.1kW or less, 3-phase 0.1kW
		Drip-proof protected type: Single-phase 0.15kW or more, 3-phase 0.15kW
		Totally enclosed fan-cooled outdoor type: 3-phase 0.25kW or more
	Power source	Single-phase, 100V (0.05~0.4kW) 3-phase, 200/220V (0.1kW or more)
Synchronous rotation speed		3600min ⁻¹
Flange spec		Nominal diameter 25mm : special companion flange Nominal diameter 32mm or more: JIS 10K thin type
Paint		Acrylic alkyd resin paint (Munsell 7.5BG5/1.5)

*1 For more than 80°C, contact us separately.

*2 Negative suction is not available for LP25A 0.08kW or less, single/3-phase.

*3 Refer to the supplemental table shown below for LP25A.

*4 The impeller material for LP32A is PPS (polyphenylene sulfide resin).

●Nominal diameter: 125~200mm

Pumping liquid	Liquid quality	Fresh water (brine supported as custom-made) *1
	Liquid temperature	0 ~ 80°C
Total suction head (In case of 20°C)		Determined by liquid temperature, NPSHR and piping loss on the suction side *2
Allowable positive pressure		See the Specification table.
Structure	Impeller	Closed
	Shaft seal	Mechanical seal (Sic vs Carbon)
	Bearing	Sealed ball bearing
Material	Impeller	SCS13
	Motor shaft	SUS420J2
	Casing	FCD450
Motor	Type	Totally enclosed fan-cooled outdoor type
	Power source	3-phase, 200/220V (7.5kW or less) 3-phase, 200/220/400/440V (11kW or more)
	Synchronous rotation speed	1800min ⁻¹
Flange spec		JIS 10K standard type
Paint*4	Pump part	Acrylic alkyd resin, blue
	Motor	Polyurethane black (RAL-9005/equivalent to Munsell N1)

*1 Contact us for use of brine because it depends on liquid quality.

*2 Confirm that the following calculation equation is met.

Suction total head (suction height + suction piping loss) ≤ Liquid level atmospheric pressure (10.3m) – NPSHR (Net Positive Suction Head Required) *3 × Margin ratio (1.3)

*3 For NPSHR, refer to the graph of Net Positive Suction Head Required.

*4 Paint color change is possible only in the pump section.

Supplementary table

Phase and voltage	Output kW	Impeller material	Shaft material	Casing material (O-ring material)
Single-phase, 100V	0.05, 0.1	PPS resin	SUS430	FC180(EPDM)
	0.15	NORYL resin	SUS303	FC150(NBR)
	0.25	SUS304	SUS304	FC200(NBR)
3-phase, 200V	0.1	PPS resin	SUS430	FC180(EPDM)
	0.25	SUS304	SUS304	FC200(NBR)

Standard accessories

●Nominal diameter: 25mm

Special companion flange (bolt, nut and packing included).....2 sets
--

●Nominal diameter: 125~200mm

Packing for flange and coupling cover1 set
--

Special specifications

Structure	Shaft seal	Mechanical seal (SiC vs Carbon) (25~100mm) Mechanical seal (SiC vs SiC) (125~200mm)
	Other	Drain (below casing) (25~100mm) High back pressure (Allowable boost pressure: 1.6MPa) (125~200mm)
Material	Impeller	SUS304 / SCS13 (25~100mm) *1
Motor	Power source	3-phase 400/440V class
Paint		Specified color for outer surface, salt-resistant paint, heavy-duty salt-resistant paint, Sewage works agency specification

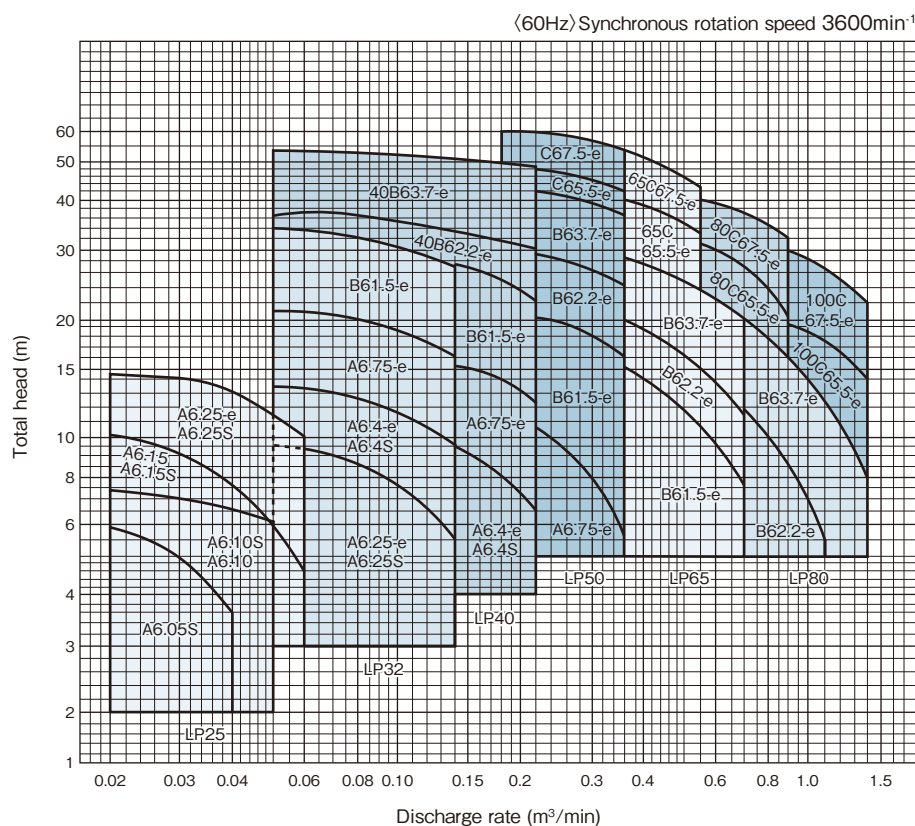
*1 Not available for LP25A, LP40A and LP50A.

Special accessories

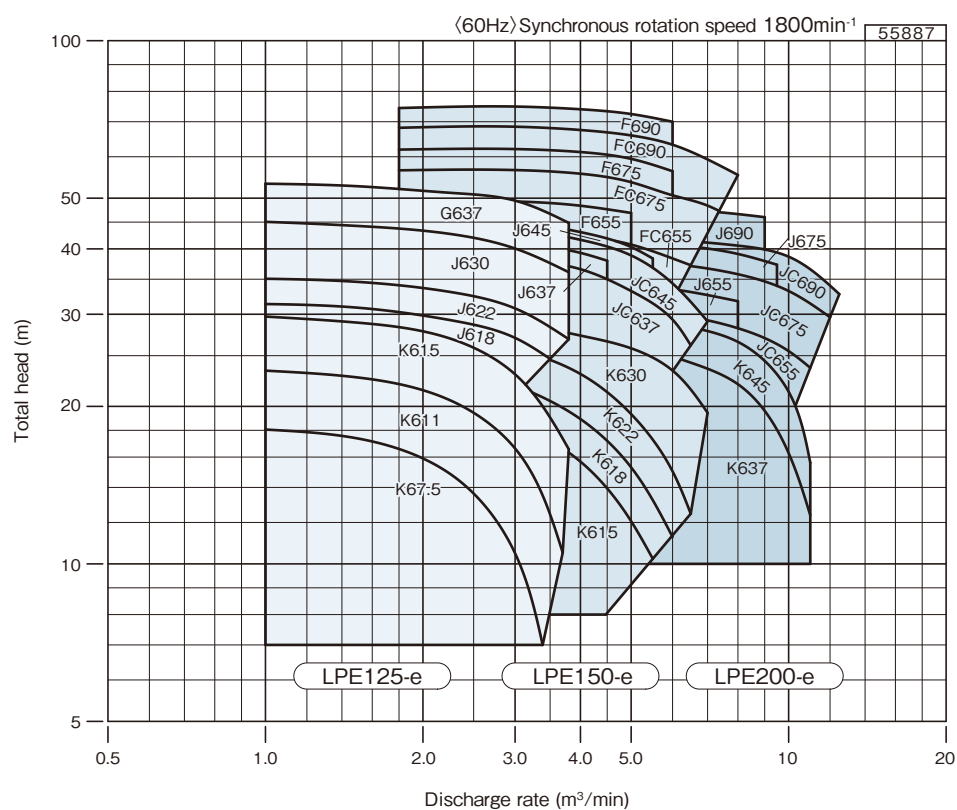
Companion flange.....Packings, bolts, and nuts included (Nominal diameter: 25mm), sluice valve, check valve, pressure gauge, vacuum gauge, compound gauge, foot valve, welded flange, vibration isolator, spacer (bore diameter 125~200mm: for adjustment of discharge height)
--

Selection chart

●Nominal diameter: 25~100mm

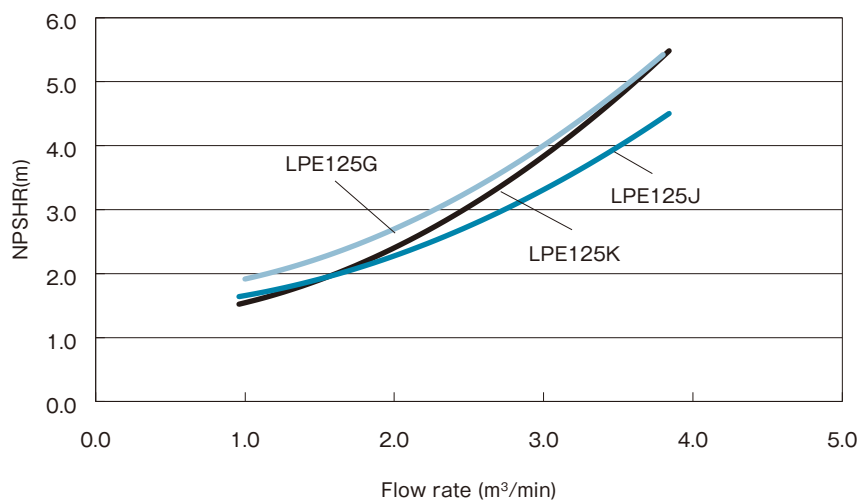


●Nominal diameter: 125~200mm

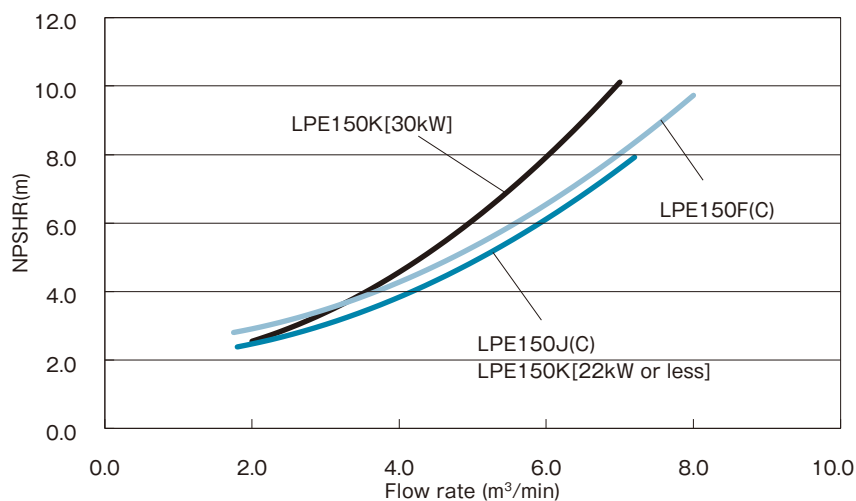


■ Net Positive Suction Head Required (NPSHR): Bore diameter 125~200mm

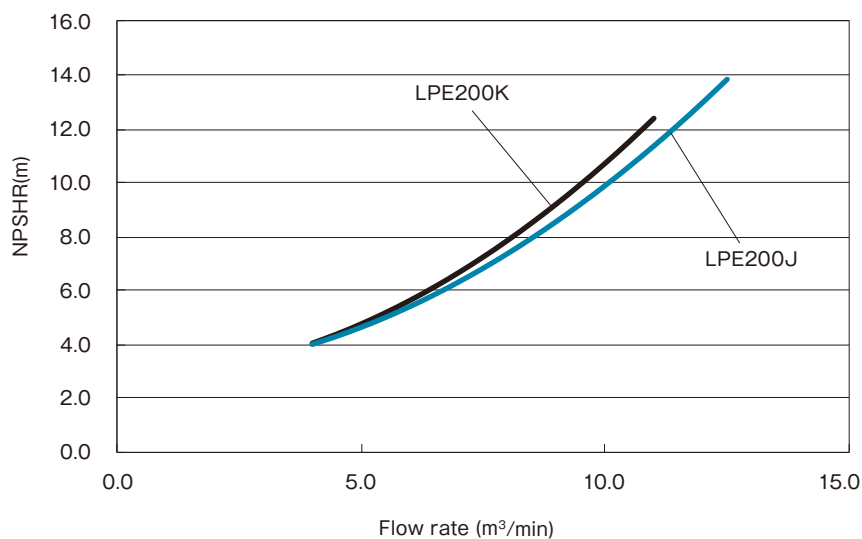
● Nominal diameter: 125mm



● Nominal diameter: 150mm



● Nominal diameter: 200mm



■ Specification table

Phase	Nominal diameter mm	Type	Output kW	Specifications						Allowable positive pressure MPa
				Discharge rate m³/min	Total head m	Discharge rate m³/min	Total head m	Discharge rate m³/min	Total head m	
Single-phase	25	LP25A6.05S	0.05	0.02	5.9	0.03	4.9	0.04	3.6	0.1
		LP25A6.10S	0.1	0.02	7.4	0.035	6.8	0.05	6.1	0.1
		LP25A6.15S	0.15	0.02	10	0.04	7.5	0.06	4.5	0.1
		LP25A6.25S	0.25	0.02	14.5	0.04	13	0.06	10	0.20
	32	LP32A6.25S	0.25	0.05	9.5	0.10	7.5	0.14	5.5	0.39
		LP32A6.4S	0.4	0.05	13.5	0.10	11.5	0.14	9.5	0.39
3-Phase	40	LP40A6.4S	0.4	0.11	10	0.18	8	0.22	6.5	0.39
		LP25A6.10	0.1	0.02	7.4	0.035	6.8	0.05	6.2	0.1
		LP25A6.15	0.15	0.02	10	0.04	7.5	0.06	4.5	0.20
	32	LP25A6.25-e	0.25	0.02	14.5	0.04	13	0.06	10	0.20
		LP32A6.25-e	0.25	0.05	9.5	0.1	7.5	0.14	5.5	0.39
		LP32A6.4-e	0.4	0.05	13.5	0.1	11.5	0.14	9.5	0.39
		LP32A6.75-e	0.75	0.05	21	0.1	18.5	0.14	16	0.39
		LP32B61.5-e	1.5	0.05	34	0.1	30.5	0.14	27	0.59
		LP40A6.4-e	0.4	0.11	10	0.18	8	0.22	6.5	0.39
	40	LP40A6.75-e	0.75	0.11	15.5	0.18	14	0.22	12.5	0.39
		LP40B61.5-e	1.5	0.11	28.5	0.18	25	0.22	22	0.59
		LP40B62.2-e	2.2	0.05	37	0.11	35	0.22	30	0.59
		LP40B63.7-e	3.7	0.05	53	0.11	52	0.22	48	0.46
	50	LP50A6.75-e	0.75	0.18	11.5	0.28	8.5	0.36	5.5	0.39
		LP50B61.5-e	1.5	0.18	21	0.28	18.5	0.36	16	0.59
		LP50B62.2-e	2.2	0.18	29.5	0.28	27	0.36	24.5	0.59
		LP50B63.7-e	3.7	0.18	43.5	0.28	40	0.36	37	0.50
		LP50C65.5-e	5.5	0.18	48	0.28	45	0.36	42	0.39
		LP50C67.5-e	7.5	0.18	60	0.28	57	0.36	53	0.39
	65	LP65B61.5-e	1.5	0.28	16	0.45	13	0.7	7.5	0.59
		LP65B62.2-e	2.2	0.28	21	0.45	17.5	0.7	11.5	0.59
		LP65B63.7-e	3.7	0.28	30	0.45	26	0.7	20.5	0.59
		LP65C65.5-e	5.5	0.28	43	0.45	37	0.56	33	0.39
	80	LP65C67.5-e	7.5	0.28	56	0.45	49	0.56	43	0.39
		LP80B62.2-e	2.2	0.45	15	0.7	12	1.1	5.5	0.59
		LP80B63.7-e	3.7	0.45	23	0.7	20	1.4	8	0.59
		LP80C65.5-e	5.5	0.45	32	0.7	27	0.9	20	0.39
	100	LP80C67.5-e	7.5	0.45	42	0.7	37	0.9	32	0.39
		LP100C65.5-e	5.5	0.71	21	1.1	17.5	1.4	14	0.39
		LP100C67.5-e	7.5	0.71	31	1.1	27	1.4	22	0.39

Nominal diameter mm	Type	Output kW	Specifications						Allowable positive pressure MPa
			Discharge rate m³/min	Total head m	Discharge rate m³/min	Total head m	Discharge rate m³/min	Total head m	
125	LPE125K-67.5-e	7.5	1.0	18.1	2.3	14.7	3.4	6.9	1.17
	LPE125K-611-e	11	1.0	23.4	2.3	20.4	3.7	10.5	1.12
	LPE125K-615-e	15	1.0	29.7	2.3	26.8	3.8	16.6	1.06
	LPE125J-618-e	18.5	1.0	31.4	2.3	29.1	3.5	24.7	1.06
	LPE125J-622-e	22	1.0	35.1	2.3	33.0	3.8	26.9	0.99
	LPE125J-630-e	30	1.0	45.1	2.3	42.6	3.8	36.1	0.92
150	LPE125G-637-e	37	1.0	53.3	2.3	51.1	3.8	44.8	0.84
	LPE150K-615-e	15	2.0	21.1	4.0	15.7	5.5	10.2	1.15
	LPE150K-618-e	18.5	2.0	24.4	4.0	18.9	6.0	11.3	1.11
	LPE150K-622-e	22	2.0	28.1	4.0	23.1	6.5	12.5	1.08
	LPE150K-630-e	30	2.0	30.2	4.0	27.3	7.0	19.4	1.08
	LPE150J-637-e	37	2.0	43.2	3.0	41.1	4.5	38.0	0.93
	LPE150JC-637-e	37	2.0	40.4	4.0	36.6	6.5	26.2	0.96
	LPE150J-645-e	45	2.0	47.6	4.0	43.1	5.5	38.3	0.88
	LPE150JC-645-e	45	2.0	46.2	4.0	41.6	7.0	29.1	0.90
	LPE150F-655-e	55	1.8	48.8	4.0	48.4	5.0	46.9	0.92
	LPE150FC-655-e	55	1.8	43.1	4.0	42.4	6.5	37.2	0.97
	LPE150F-675-e	75	1.8	61.6	4.0	60.9	6.0	55.9	0.78
	LPE150FC-675-e	75	1.8	56.5	5.0	53.6	7.5	46.8	0.83
	LPE150F-690-e	90	1.8	74.4	4.0	73.9	6.0	70.0	0.66
200	LPE150FC-690-e	90	1.8	68.2	5.0	65.9	8.0	55.4	0.90
	LPE200K-637-e	37	4.0	29.1	8.0	22.0	11.0	12.4	1.06
	LPE200K-645-e	45	4.0	32.3	8.0	26.6	11.0	15.6	1.04
	LPE200J-655-e	55	4.0	34.5	8.0	31.8	—	—	1.03
	LPE200JC-655-e	55	4.0	31.0	8.0	28.2	11.0	23.7	1.06
	LPE200J-675-e	75	4.0	41.6	8.0	39.1	9.5	37.3	0.96
	LPE200JC-675-e	75	4.0	38.3	8.0	35.8	12.0	29.6	0.99
	LPE200J-690-e	90	4.0	49.0	8.0	46.6	9.0	46.0	0.89
	LPE200JC-690-e	90	4.0	42.8	8.0	40.6	12.5	32.8	0.95

* The allowable positive pressure for high back pressure is 1.6MPa.

Motor specification table

●Nominal diameter: 25~100mm

Classification		Output kW	Rating			Starting			Thermal class	Bearing	
Phase	Type		Voltage V	Current A	Rotation speed min ⁻¹	Torque %	Current A	Method		Load side (D.S)	Anti-load side (O.S)
Single phase	Totally enclosed self-cooling outdoor type	0.05	100	1.2	3370	100	3.4	Capacitor	F	6201UUC3	6201UUC3
		0.1	100	2.2	3355	80	6.2	Capacitor	F	6201UUC3	6201UUC3
	Drip-proof protected type	0.15	100	2.7	3300	52.6	7.7	Capacitor	E	6200DDU	6200DDU
		0.25	100	5.5	3540	101	32.3	Capacitor	E	6204ZC3	6203ZC3
		0.4	100	6.6	3470	62	32.3	Capacitor	E	6204ZC3	6203ZC3
3-phase	Totally enclosed self-cooling outdoor type	0.1	200	0.75	3365	360	3.2	Direct-on-Line	F	6201UUC3	6201UUC3
	Drip-proof protected type	0.15	200	0.8	3330	355.3	4.8	Direct-on-Line	E	6200DDU	6200DDU
	Totally enclosed fan-cooled outdoor type	0.25	200/220	1.1/1.1	3480/3510	389/471	9.8/10.8	Direct-on-Line	F	6204ZC3E	6203ZC3E
		0.4	200/220	1.7/1.6	3440/3470	348/421	13.5/14.9	Direct-on-Line	F	6204ZC3E	6203ZC3E
		0.75	200/220	3.0/2.9	3470/3500	268/324	25.2/27.7	Direct-on-Line	F	6205ZC3E	6204ZC3E
		1.5	200/220	5.6/5.2	3470/3495	275/333	48.8/53.7	Direct-on-Line	B	6306ZC3E	6205ZC3E
		2.2	200/220	8.1/7.4	3460/3495	337/408	76.5/84.2	Direct-on-Line	B	6306ZC3E	6205ZC3E
		3.7	200/220	14.2/13	3510/3530	221/267	105/115	Direct-on-Line	B	6307ZC3E	6306ZC3E
		5.5	200/220	20.8/19.5	3520/3530	195/236	151/165	Direct-on-Line	B	6308ZC3E	6306ZC3E
		7.5	200/220	27.5/25.3	3510/3530	182/220	191/210	Direct-on-Line	B	6308ZC3E	6306ZC3E

* Urea grease is used for the bearing. However, lithium grease is used for 0.15kW.

●Nominal diameter: 125~200mm

Classification		Output kW	Rating			Starting			Thermal class	Bearing	
Phase	Type		Voltage V	Current A	Rotation speed min ⁻¹	Torque %	Current A	Method		Load side (D.S)	Anti-load side (O.S)
3-phase	Totally enclosed fan-cooled outdoor type	7.5	200/220V	27.0/25.5	1765/1770	270/325	230/252	Direct-on-Line	F	6308ZC3	6306ZC3
		11	200/220V	41.0/39.0	1765/1770	308/387	303/341	Direct-on-Line	F	6309ZC3	6309ZC3
		15	200/220V	55.5/52.0	1765/1770	293/370	393/443	Direct-on-Line	F	6309ZC3	6309ZC3
		18.5	200/220V	66.0/62.0	1765/1770	239/293	480/526	Direct-on-Line	F	6311ZC3	6311ZC3
		22	200/220V	80.0/74.0	1765/1770	264/329	559/629	Direct-on-Line	F	6311ZC3	6311ZC3
		30	200/220V	105/98.0	1765/1770	238/295	759/844	Direct-on-Line	F	6312ZC3	6311ZC3
		37	200/220V	132/124	1760/1770	274/341	1008/1138	Direct-on-Line	F	6313ZC3	6312ZC3
		45	200/220V	160/150	1760/1770	257/323	1162/1311	Direct-on-Line	F	6313ZC3	6312ZC3
		55	200/220V	194/180	1770/1775	248/325	1475/1675	Direct-on-Line	F	6314ZC3	6313ZC3
		75	200/220V	262/244	1770/1775	205/254	1912/2125	Direct-on-Line	F	6317ZC3	6314ZC3
		90	200/220V	312/291	1770/1775	188/232	2184/2422	Direct-on-Line	F	6317ZC3	6314ZC3

* Urea grease is used for bearings.

■ Component parts list

● Nominal diameter: 25~100mm

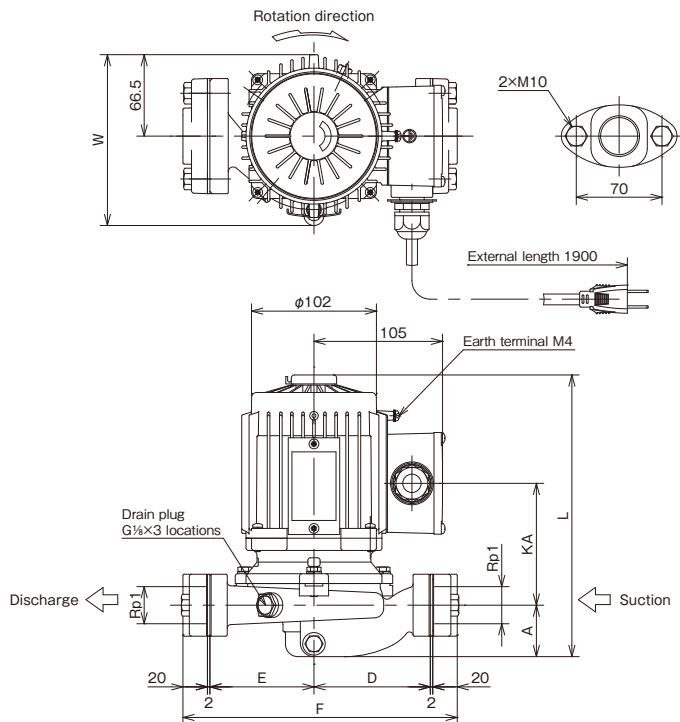
Type	Mechanical seal	O-ring (for casing)
LP25A6.05S	EA-104-9	G80
LP25A6.10S	EH-791-PB-8	G95
LP25A6.15S	EA560-008	G95
LP25A6.25S	H-16	G120
LP32A6.25S	H-16	G120
LP32A6.4S	H-16	G120
LP40A6.4S	H-16	G120
LP25A6.10	EH-791-PB-8	G95
LP25A6.15	EA560-008	G95
LP25A6.25-e	H-16	G120
LP32A6.25-e	H-16	G120
LP32A6.4-e	H-16	G120
LP32A6.75-e	H-16	G120
LP32B61.5-e	H-20H	K184
LP40A6.4-e	H-16	G120
LP40A6.75-e	H-16	G120
LP40B61.5-e	H-20H	G140
LP40B62.2-e	H-20H	K184
LP40B63.7-e	H-20H	K184
LP50A6.75-e	H-16	G120
LP50B61.5-e	H-20H	G140
LP50B62.2-e	H-20H	G140
LP50B63.7-e	H-20H	K184
LP50C65.5-e	EA560-25	K198
LP50C67.5-e	EA560-25	K198
LP65B61.5-e	H-20H	G140
LP65B62.2-e	H-20H	G140
LP65B63.7-e	H-20H	G140
LP65C65.5-e	EA560-25	K198
LP65C67.5-e	EA560-25	K198
LP80B62.2-e	H-20H	G140
LP80B63.7-e	H-20H	G140
LP80C65.5-e	EA560-25	K198
LP80C67.5-e	EA560-25	K198
LP100C65.5-e	EA560-25	K198
LP100C67.5-e	EA560-25	K198

● Nominal diameter: 125~200mm

Type	Mechanical seal	O-ring (for Seal cover)
LPE125K-67.5-e	0350/2100/S/AR1S1/BS	G130
LPE125K-611-e	0350/2100/S/AR1S1/BS	G130
LPE125K-615-e	0350/2100/S/AR1S1/BS	G130
LPE125J-618-e	0350/2100/S/AR1S1/BS	G130
LPE125J-622-e	0350/2100/S/AR1S1/BS	G130
LPE125J-630-e	0350/2100/S/AR1S1/BS	G130
LPE125G-637-e	0450/2100/S/AR1S1/BS	K150
LPE150K-615-e	0350/2100/S/AR1S1/BS	G130
LPE150K-618-e	0350/2100/S/AR1S1/BS	G130
LPE150K-622-e	0350/2100/S/AR1S1/BS	G130
LPE150K-630-e	0350/2100/S/AR1S1/BS	G130
LPE150J-637-e	0450/2100/S/AR1S1/BS	K150
LPE150JC-637-e	0450/2100/S/AR1S1/BS	K150
LPE150J-645-e	0450/2100/S/AR1S1/BS	K150
LPE150JC-645-e	0450/2100/S/AR1S1/BS	K150
LPE150F-655-e	0550/2100/S/AR1S1/BS	K160
LPE150FC-655-e	0550/2100/S/AR1S1/BS	K160
LPE150F-675-e	0550/2100/S/AR1S1/BS	K160
LPE150FC-675-e	0550/2100/S/AR1S1/BS	K160
LPE150F-690-e	0550/2100/S/AR1S1/BS	K160
LPE150FC-690-e	0550/2100/S/AR1S1/BS	K160
LPE200K-637-e	0450/2100/S/AR1S1/BS	K150
LPE200K-645-e	0450/2100/S/AR1S1/BS	K150
LPE200J-655-e	0550/2100/S/AR1S1/BS	K160
LPE200JC-655-e	0550/2100/S/AR1S1/BS	K160
LPE200J-675-e	0550/2100/S/AR1S1/BS	K160
LPE200JC-675-e	0550/2100/S/AR1S1/BS	K160
LPE200J-690-e	0550/2100/S/AR1S1/BS	K160
LPE200JC-690-e	0550/2100/S/AR1S1/BS	K160

Assembly drawing

●LP25A6.05S-6.10S



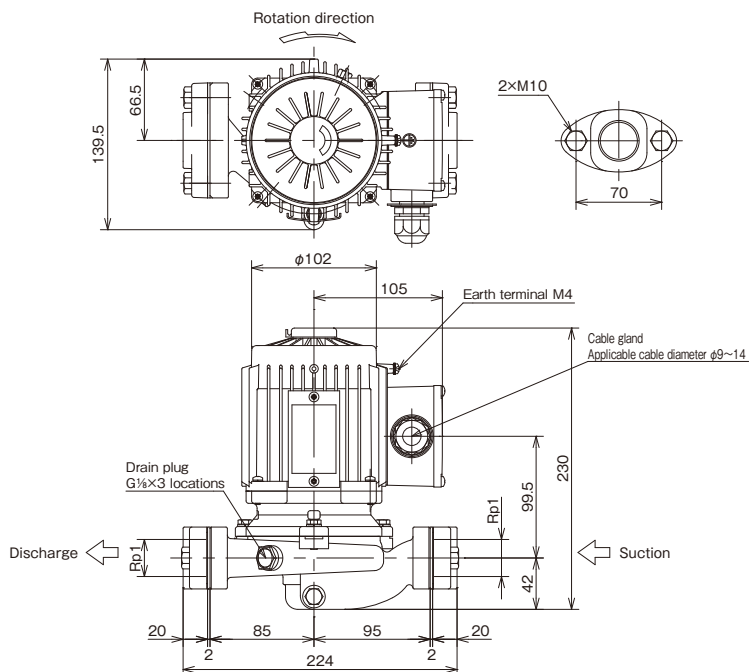
Dimensions

(Unit: mm)

Nominal diameter d	Type	Output kW	Pump and motor							Approx. mass kg
			A	D	E	F	KA	L	W	
25	LP25A6.05S	0.05	30	69	69	182	102	220.5	134.5	6.0
	LP25A6.10S	0.1	42	95	85	224	99.5	230	139.5	8.0

Assembly drawing

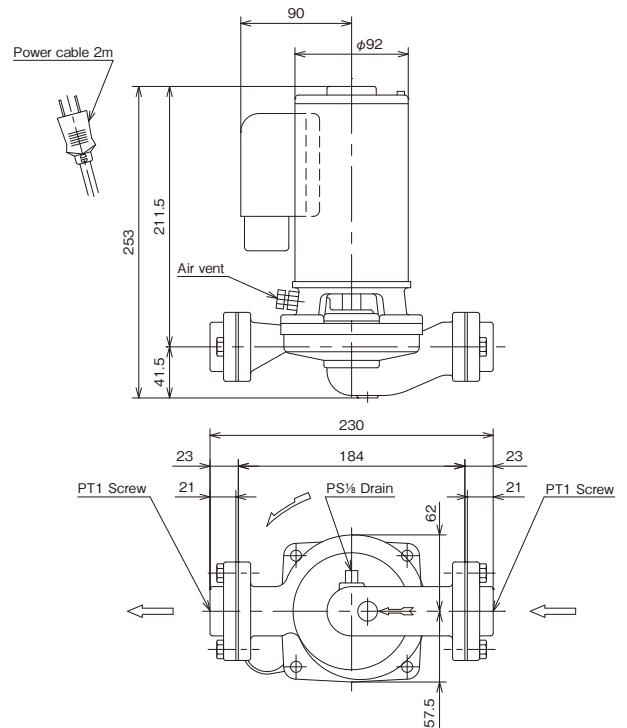
●LP25A6.10



Nominal diameter: 25mm
Phase/voltage: 3-phase/200/220V
Output: 0.1kW
Approx. mass: 7.0kg

Assembly drawing

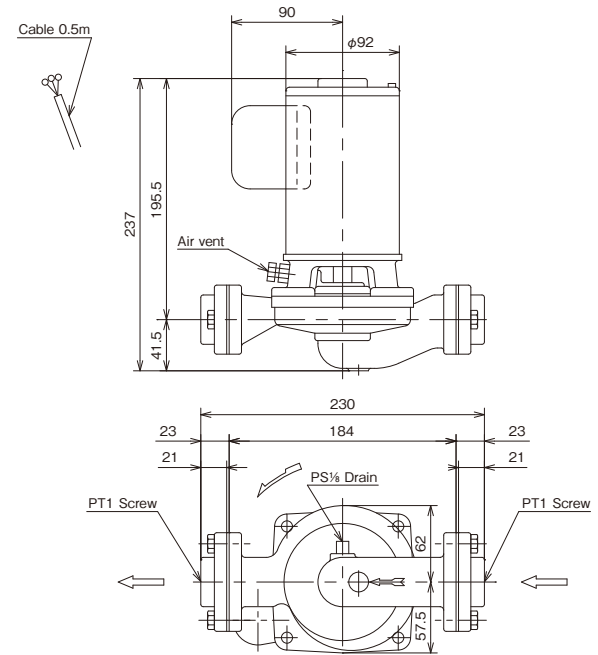
●LP25A6.15S



Nominal diameter: 25mm
Phase/voltage: single-phase/100V
Output: 0.15kW
Approx. mass: 7.5kg

Assembly drawing

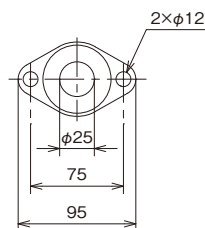
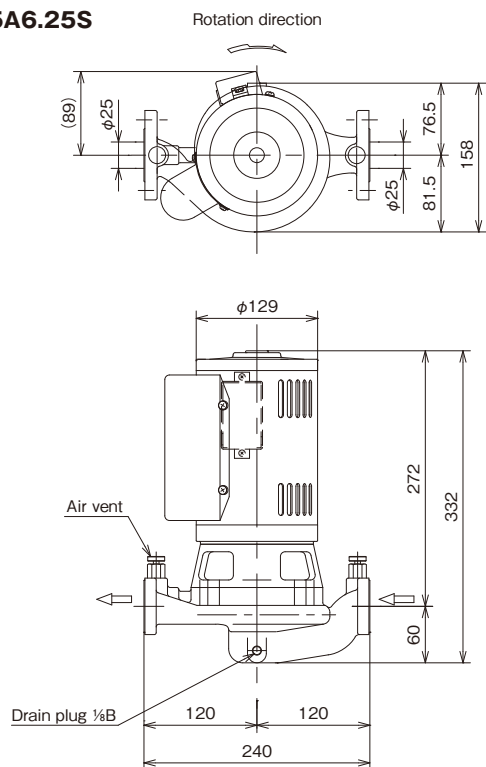
●LP25A6.15



Nominal diameter: 25mm
Phase/voltage: 3-phase/200/220V
Output: 0.15kW
Approx. mass: 6.4kg

Assembly drawing

●LP25A6.25S

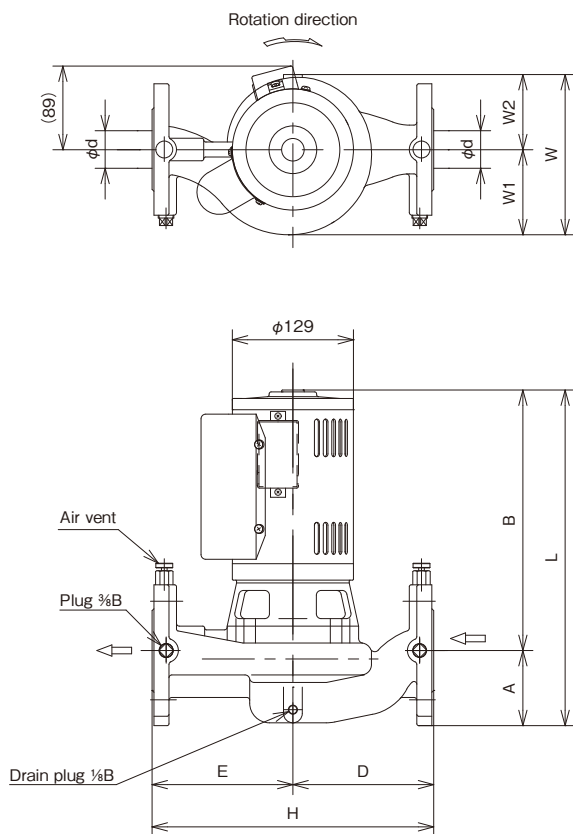


Flange dimensions

Nominal diameter: 25mm
 Phase/voltage: single-phase/100V
 Output: 0.25kW
 Approx. mass: 19.0kg

Assembly drawing

●LP32~40A Single phase



Dimensions

(Unit: mm)

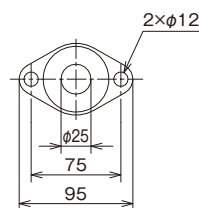
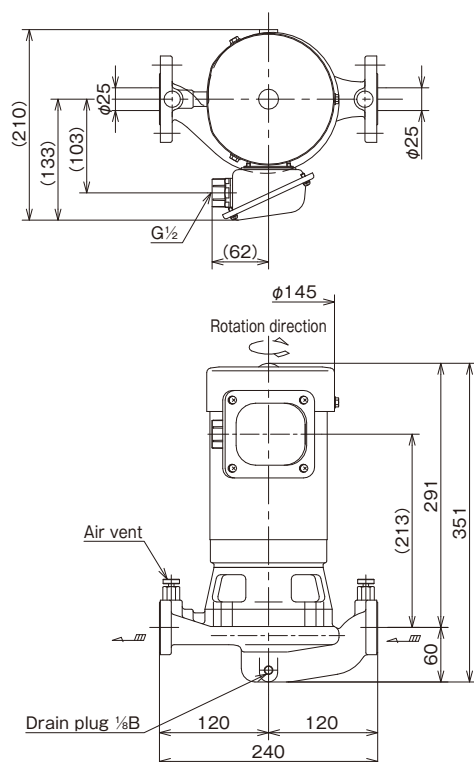
Nominal diameter d	Type	Output kW	A	B	D	E	H
32	LP32A6.25S	0.25	70	276	140	140	280
	LP32A6.4S	0.4	70	276	140	140	280
40	LP40A6.4S	0.4	80	278	150	150	300

Type	L	W	W1	W2	Approx. mass kg
LP32A6.25S	346	173	92	81	28
LP32A6.4S	346	173	92	81	27
LP40A6.4S	358	171	91	80	29

☆Flange dimensions: JIS 10K thin type or equivalent

Assembly drawing

●LP25A6.25-e

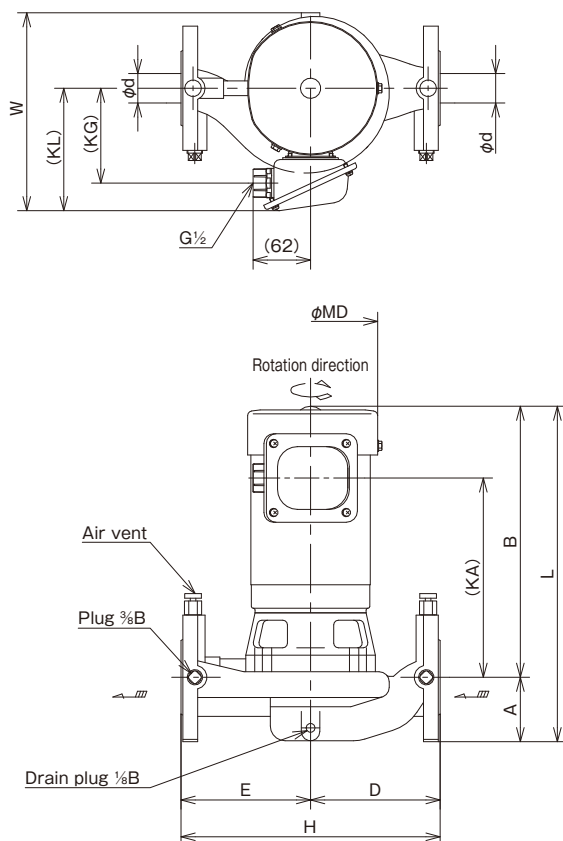


Flange dimensions

Nominal diameter: 25mm
Phase/voltage: 3-phase/200/220V
Output: 0.25kW
Approx. mass: 18.0kg

Assembly drawing

●LP32~50A-e 0.25~0.75kW



Dimensions

(Unit: mm)

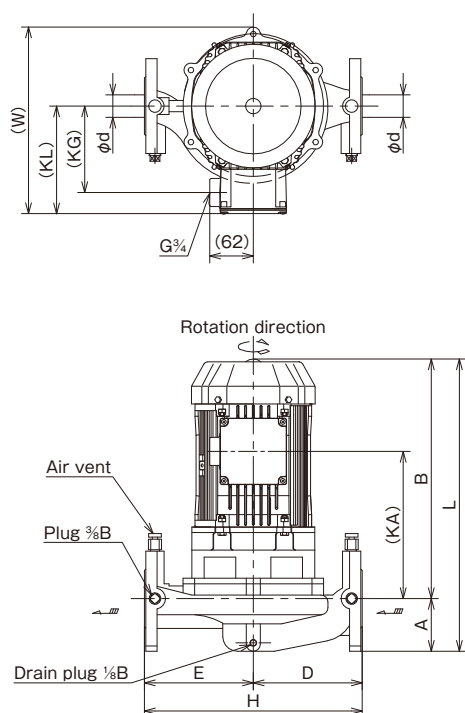
Nominal diameter d	Type	Output kW	A	B	D	E	H
32	LP32A6.25-e	0.25	70	295	140	140	280
	LP32A6.4-e	0.4	70	295	140	140	280
	LP32A6.75-e	0.75	70	304	140	140	280
40	LP40A6.4-e	0.4	80	297	150	150	300
	LP40A6.75-e	0.75	80	306	150	150	300
50	LP50A6.75-e	0.75	85	311	160	150	310

Type	KA	KG	KL	L	MD	W	Approx. mass kg
LP32A6.25-e	217	103	133	365	145	215	25
LP32A6.4-e	217	103	133	365	145	214	29
LP32A6.75-e	211	111	141	374	163	226	35
LP40A6.4-e	219	103	133	377	145	213	30
LP40A6.75-e	213	111	141	386	163	221	35
LP50A6.75-e	218	111	141	396	163	224	37

☆Flange dimensions: JIS 10K thin type or equivalent

Assembly drawing

●LP-B-e



Dimensions

(Unit: mm)

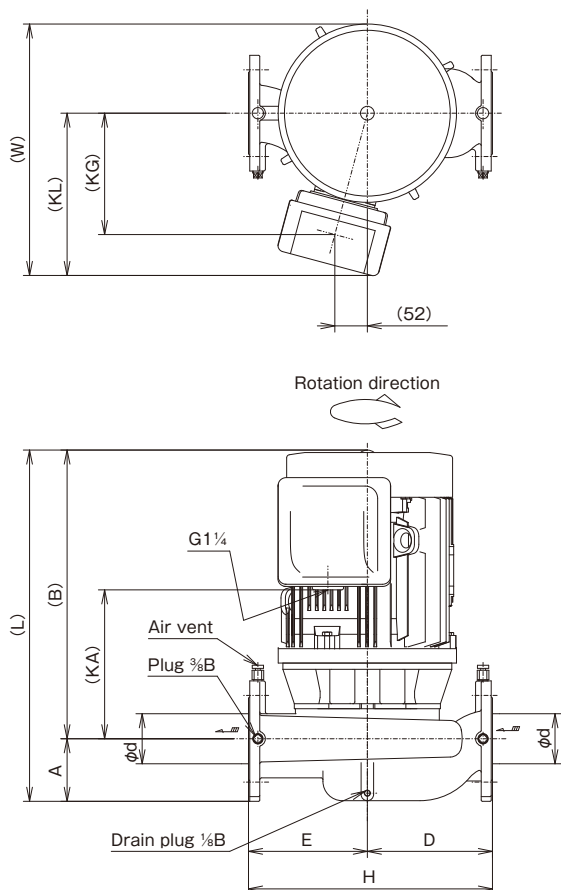
Nominal diameter ϕ	Type	Output kW	A	B	D	E	H
32	LP32B61.5-e	1.5	75	341	155	155	310
40	LP40B61.5-e	1.5	80	345	150	150	300
	LP40B62.2-e	2.2	80	345	170	170	340
	LP40B63.7-e	3.7	80	388	170	170	340
50	LP50B61.5-e	1.5	80	350	155	155	310
	LP50B62.2-e	2.2	80	350	155	155	310
	LP50B63.7-e	3.7	80	393	175	165	340
65	LP65B61.5-e	1.5	95	358	175	165	340
	LP65B62.2-e	2.2	95	358	175	165	340
	LP65B63.7-e	3.7	95	401	175	165	340
80	LP80B62.2-e	2.2	100	360	200	190	390
	LP80B63.7-e	3.7	100	403	200	190	390

Type	KA	KG	KL	L	W	Approx. mass kg
LP32B61.5-e	210	123	155	416	266	30
LP40B61.5-e	214	123	155	425	243	29
LP40B62.2-e	214	123	155	425	266	34
LP40B63.7-e	250	147	177	468	289	55
LP50B61.5-e	219	123	155	430	243	31
LP50B62.2-e	219	123	155	430	243	35
LP50B63.7-e	255	147	177	473	289	57
LP65B61.5-e	227	123	155	453	251	35
LP65B62.2-e	227	123	155	453	251	39
LP65B63.7-e	263	147	177	496	274	61
LP80B62.2-e	229	123	155	460	254	46
LP80B63.7-e	265	147	177	503	278	67

☆Flange dimensions: JIS 10K thin type or equivalent

Assembly drawing

●LP-C-e



Dimensions

(Unit: mm)

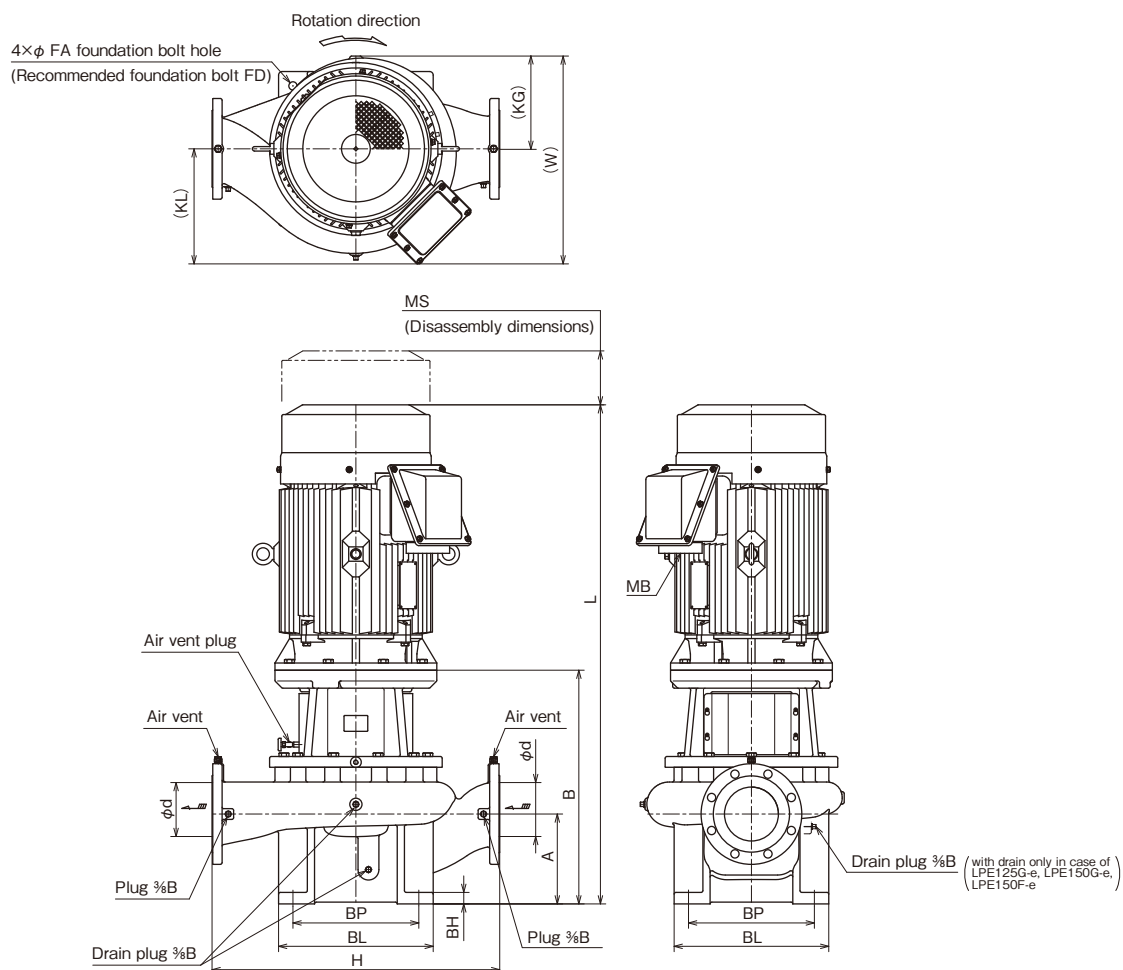
Nominal diameter ϕ	Type	Output kW	A	B	D	E	H
50	LP50C65.5-e	5.5	85	458	170	170	340
	LP50C67.5-e	7.5	85	458	170	170	340
65	LP65C65.5-e	5.5	95	458	185	185	370
	LP65C67.5-e	7.5	95	458	185	185	370
80	LP80C65.5-e	5.5	100	461	200	190	390
	LP80C67.5-e	7.5	100	461	200	190	390
100	LP100C65.5-e	5.5	115	460	225	205	430
	LP100C67.5-e	7.5	115	460	225	205	430

Type	KA	KG	KL	L	W	Approx. mass kg
LP50C65.5-e	235	194	260	543	402	81
LP50C67.5-e	235	194	260	543	402	92
LP65C65.5-e	235	194	260	553	402	87
LP65C67.5-e	235	194	260	553	402	98
LP80C65.5-e	238	194	260	561	402	87
LP80C67.5-e	238	194	260	561	402	98
LP100C65.5-e	237	194	260	575	402	94
LP100C67.5-e	237	194	260	575	402	105

☆Flange dimensions: JIS 10K thin type or equivalent

Assembly drawing

●LPE125~200-e



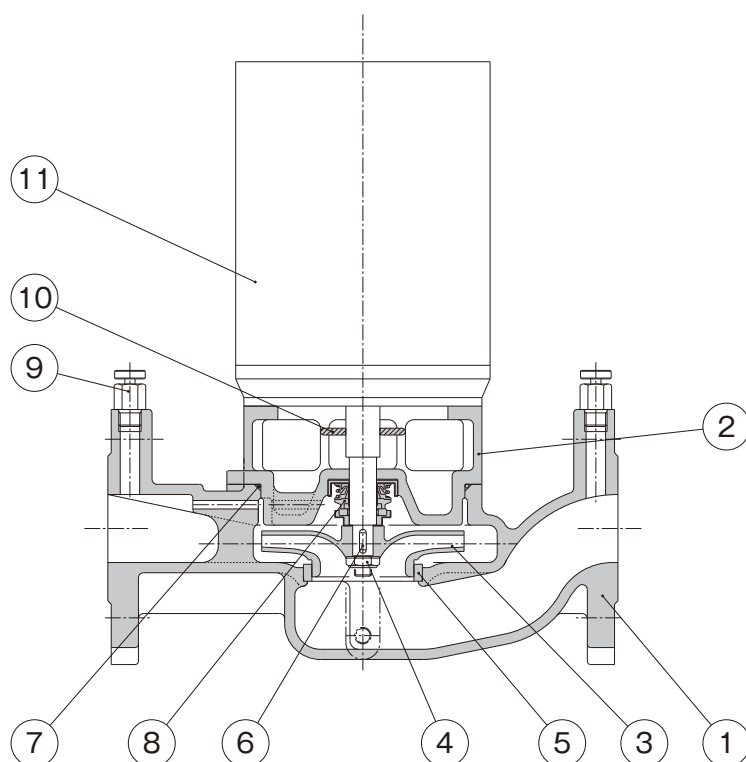
Dimensions

(Unit: mm)

Nominal diameter ϕ	Type	Output kW	A	B	H	KG	KL	L	MB	MS	W	BL	BP	BH	FA	FD	Approx. mass kg
125	LPE125K-67.5-e	7.5	250	608	700	215	256	1067	G1	90	471	360	300	32	23	M20	270
	LPE125K-611-e	11	250	608	700	226	256	1142	G1 $\frac{1}{2}$	120	482	360	300	32	23	M20	323
	LPE125K-615-e	15	250	608	700	226	256	1172	G1 $\frac{1}{2}$	120	482	360	300	32	23	M20	341
	LPE125J-618-e	18.5	250	608	800	251	277	1170	G2	120	528	360	300	32	23	M20	406
	LPE125J-622-e	22	250	608	800	251	276	1170	G2	120	528	360	300	32	23	M20	413
	LPE125J-630-e	30	250	608	800	234	306	1210	G2	120	540	360	300	32	23	M20	449
	LPE125G-637-e	37	250	638	800	254	320	1376	G2 $\frac{1}{2}$	150	574	360	300	32	23	M20	591
150	LPE150K-615-e	15	250	620	800	231	286	1184	G1 $\frac{1}{2}$	120	517	430	350	32	23	M20	377
	LPE150K-618-e	18.5	250	620	800	251	286	1183	G2	120	537	430	350	32	23	M20	426
	LPE150K-622-e	22	250	620	800	251	286	1183	G2	120	537	430	350	32	23	M20	433
	LPE150K-630-e	30	250	620	800	231	306	1222	G2	120	537	430	350	32	23	M20	469
	LPE150J(C)-637-e	37	250	650	800	260	320	1388	G2 $\frac{1}{2}$	150	580	430	350	32	23	M20	624
	LPE150J(C)-645-e	45	250	650	800	260	320	1388	G2 $\frac{1}{2}$	150	580	430	350	32	23	M20	649
	LPE150F(C)-655-e	55	250	690	1000	311	361	1432	G2 $\frac{1}{2}$	150	672	500	410	50	25	M22	815
	LPE150F(C)-675-e	75	250	690	1000	311	426	1568	G3	150	737	500	410	50	25	M22	982
	LPE150F(C)-690-e	90	250	690	1000	311	426	1568	G3	150	737	500	410	50	25	M22	1022
200	LPE200K-637-e	37	295	720	900	267	332	1458	G2 $\frac{1}{2}$	150	599	500	410	32	25	M22	605
	LPE200K-645-e	45	295	720	900	267	332	1458	G2 $\frac{1}{2}$	150	599	500	410	32	25	M22	630
	LPE200J(C)-655-e	55	295	760	1000	343	404	1502	G2 $\frac{1}{2}$	150	747	500	410	50	25	M22	924
	LPE200J(C)-675-e	75	295	760	1000	343	426	1638	G3	150	769	500	410	50	25	M22	1089
	LPE200J(C)-690-e	90	295	760	1000	343	426	1638	G3	150	769	500	410	50	25	M22	1129

Example of sectional drawing

●LP40~50A Single phase



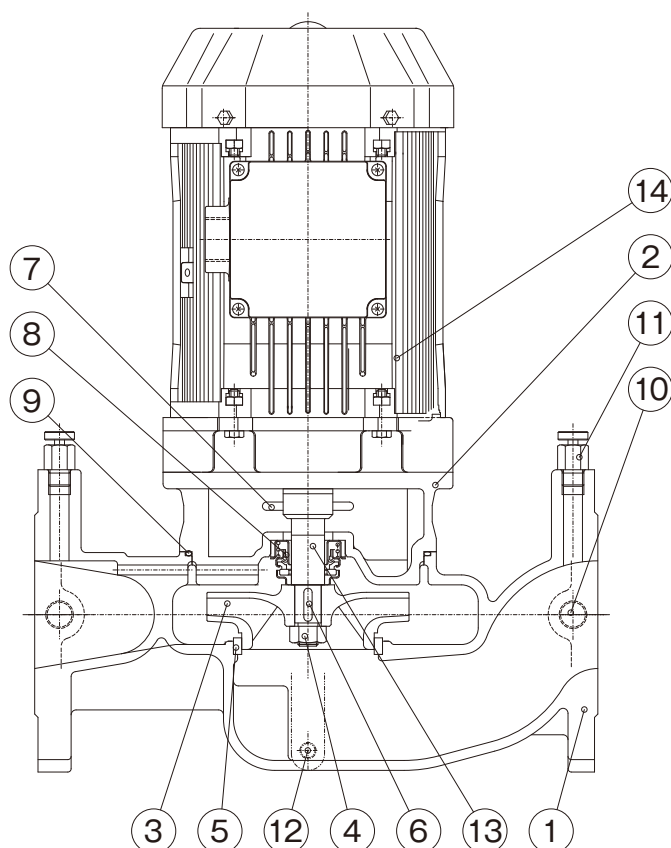
Parts list

No.	Part name	Qty	Material
1	Casing	1	FC200
2	Frame	1	FC200
3	Impeller	1	CAC406
4	Impeller nut	1	SUS304
5	Liner ring	1	CAC406
6	Key	1	SUS420J2
7	O-ring	1	NBR
8	Mechanical seal	1	Ceramic vs Carbon
9	Air vent valve	2	C3604BD
10	Deflector	1	CR
11	Motor	1	

Applicable models: LP40A6.25S / LP40A6.4S / LP50A6.4S

Example of sectional drawing

●LP32~65B-e 1.5kW



Parts list

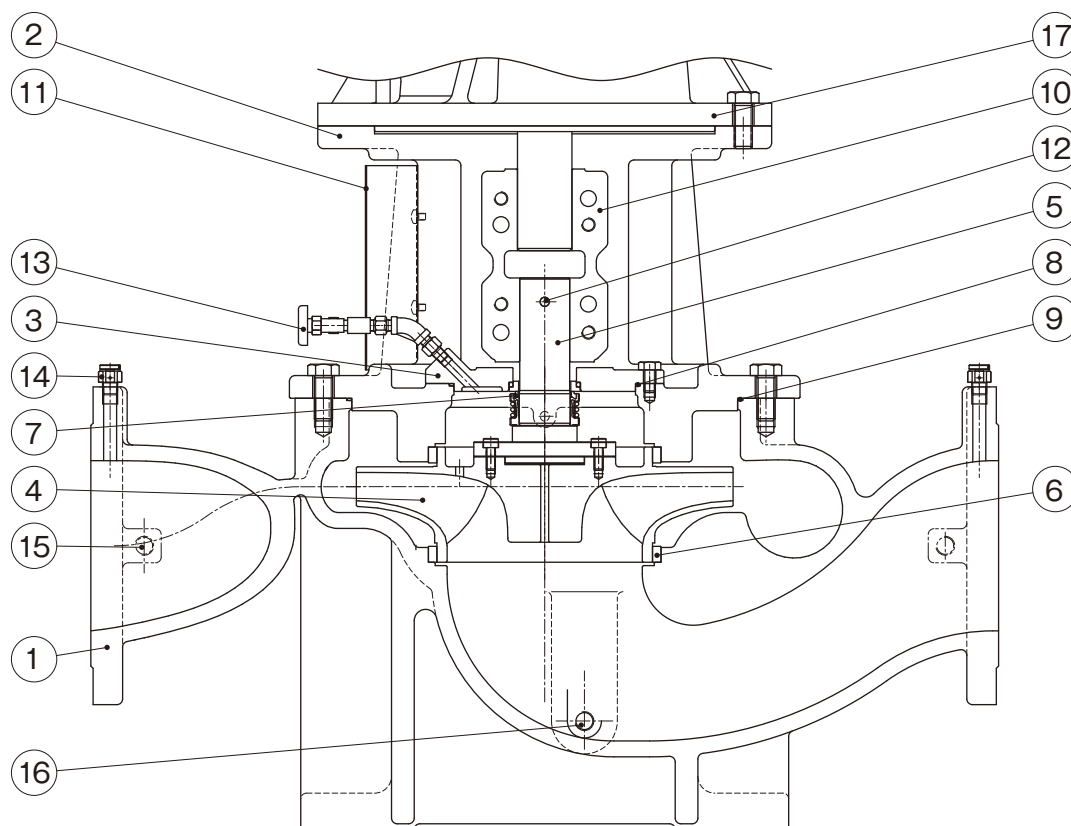
No.	Part name	Qty	Material
1	Casing	1	FC200
2	Frame	1	FC200
3	Impeller	1	CAC406
4	Impeller nut	1	SUS304
5	Liner ring	1	CAC406
6	Key	1	SUS304
7	Deflector	1	CR
8	Mechanical seal	1	Ceramic vs Carbon
9	O-ring	1	NBR
10	Plug	2	SWCH
11	Air vent valve	2	C3604BD
12	Drain plug	1	SWCH
13	Motor shaft *1	1	SUS304+S35C
14	Motor	1	-

Applicable models: LP32B-61.5-e / LP40B-61.5-e
LP50B-61.5-e / LP65B-61.5-e

*1 The material is equivalent.

Example of sectional drawing

●LPE-e



Parts list

No.	Part name	Qty	Material
1	Casing	1	FCD450
2	Frame	1	FCD450
3	Seal cover	1	FCD450
4	Impeller	1	SCS13
5	Main shaft	1	SUS420J2
6	Liner ring	2	CAC406
7	Mechanical seal	1	SiC vs Carbon
8	O-ring	1	NBR
9	O-ring	1	NBR

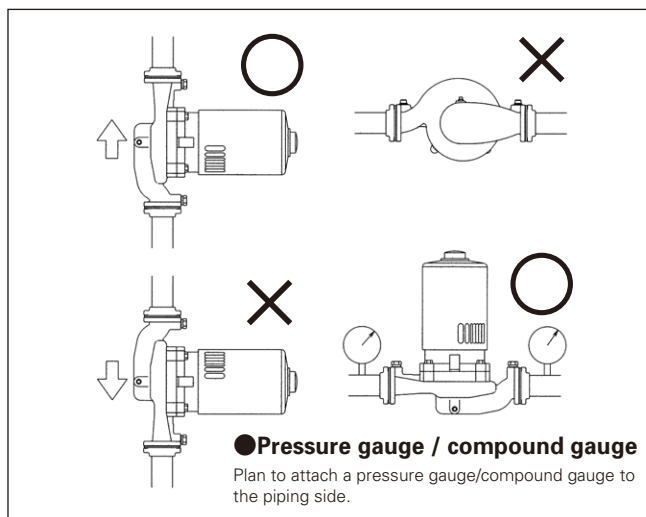
No.	Part name	Qty	Material
10	Coupling	1	FCD450
11	Coupling cover	2	SUS304
12	Parallel pin	1	S45C
13	Air vent valve	1	C3771B
14	Air vent plug	2	C3604BD
15	Plug	2	SWCH
16	Drain plug	2*	SWCH
17	Motor	1	—

Applicable models: LPE125-e / LPE150-e / LPE200-e

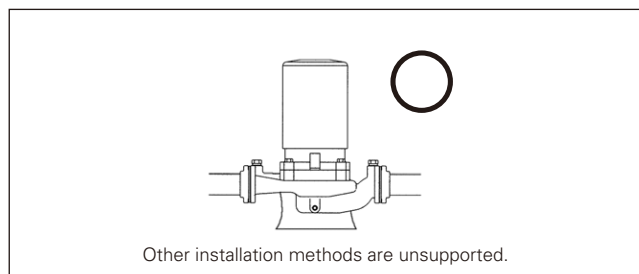
* 3 drain plugs for LPE125G-e, LPE150G-e and LPE150F-e.

Installation method

●Nominal diameter: 25~100mm



●Nominal diameter: 125~200mm





TERAL INC.

Head Office 230, Moriwake, Miyuki-cyo, Fukuyama-city, Hiroshima, 720-0003, Japan
Tel.+81-84-955-1111 Fax.+81-84-955-5777
www.teral.net

Teral Asia Limited

Room 1001,10/F, Olympia Plaza, 255 King's Road, North Point, Hong Kong
Tel.+852-2571-0935 Fax.+852-2571-0619

TERAL THAI CO.,LTD.

150 Moo 16 Udomsornayuth Rd., T.Bangkrasan, A.Bangpa-In, Ayutthaya 13160 Thailand
Tel.+66-3535-2148-9 Fax.+66-3535-2150

TERAL TRADING & SERVICE CO.,LTD.

150 Moo 16 Udomsornayuth Rd., T.Bangkrasan, A.Bangpa-In, Ayutthaya 13160 Thailand
Tel.+66-3535-2145-7 Fax.+66-3535-8549

Teral Malaysia Sdn.Bhd.

10, Jalan SS13/6A, Subang Jaya Industrial Estate, 47500, Subang Jaya, Selangor D.E, Malaysia
Tel.+60-3-5611 5775 Fax.+60-3-5612 5775

PT.Teral Indonesia Pumps and Fans

Komplek Pergudangan Taman Tekno Blok M No.26.Jl.BSD Sektor XI, Kelurahan Setu,
Kecamatan Setu, Kota Tangerang Selatan, Provinsi Banten.15314.
Tel.+62-21-29665778 Fax.+62-21-75673913

Teral Vietnam Limited Liability Company

9th Floor, LADECO Building, No. 266 Doi Can Street, Lieu Giai Ward, Ba Dinh District, Hanoi City, Vietnam
Tel.+84-24-393-52-790 Fax.+84-24-393-52-289

Teral General Machine (Shanghai) Co.,Ltd.

No.285, Yuan Qu Road(N), Bei Qiao, Min Hang District, Shanghai 201109, China
Tel.+86-21-6490-9128 Fax.+86-21-6490-9126

Teral-Aerotech Fans Private Ltd.

Plot No.188-189, Ecotech Extension-1, Surajpur Kasna Road, Greater Noida-201306, Uttar Pradesh, India
Tel.+91-9810162210, +91-9310162210

Teral Middle East F.Z.C.

1806-002, 18th floor, BB1, Mazaya Business Avenue, JLT, Dubai, UAE. PO Box 414781
Tel.+971-4369 9039

Teral Pumps & Fans North America Ltd.

Suite # 197, 800-15355 24 Ave Surrey, B.C., CANADA V4A 2H9
Tel.+1-604-839-1008

Teral Philippines Inc.

Roof Deck 3, Vernida 1 Building, 120 Amorsolo St., Legaspi Village, Makati City
Tel.+63 2 7717-9314