

Line pumps

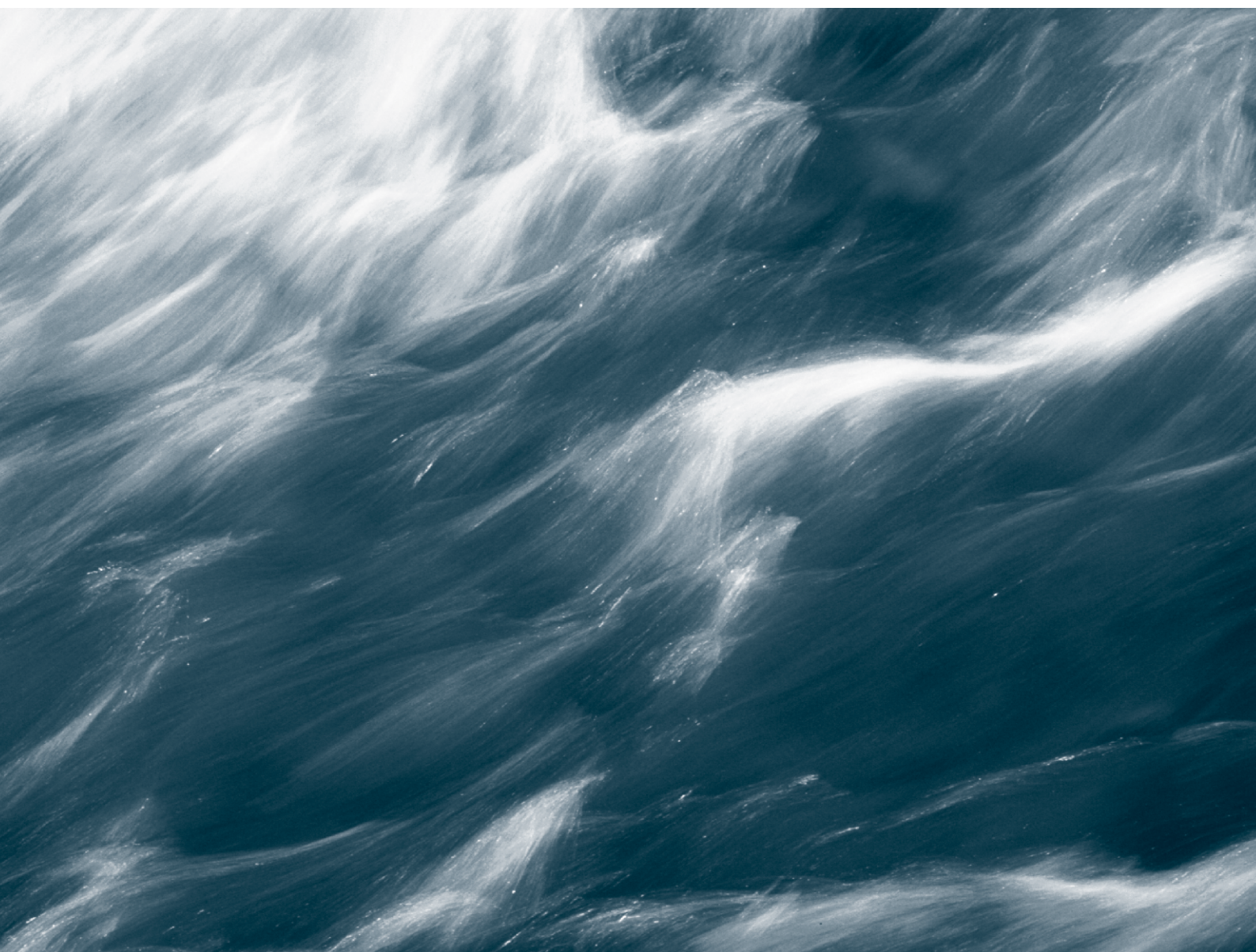
# SLP2/LP

***TERAL***



Triple e series

60Hz



**TERAL INC.**

## Applications

- Circulation of cold/warm water, hot-water supply, various settings
- General water supply, and other uses

## Features

- ① Energy-saving pump with a Top Runner efficiency (equivalent to IE3) motor.
- ② Strong, highly resistant against distortion, and long-life due to precision stainless steel casting.
- ③ Allowable boost pressure is designed reasonably high.
- ④ No water leakage and easy maintenance through the adoption of highly durable mechanical seal.
- ⑤ Measures against rusty water with stainless steel wetted parts.
- ⑥ Compact, lightweight, and inline-type that allows installation in the middle of piping, and installable in small spaces.
- ⑦ Best suited for hot-water supply and circulation of warm water.
- ⑧ Compatible mounting dimensions with conventional pumps.

## Description of types

**SLP2 - 25 - 6. 25 - e**

①      ②      ③      ④      ⑤      ⑥

① Model

② Nominal diameter (25mm)

③ Frequency (60Hz)

④ Output (0.25kW)

⑤ Phase (S: Single-phase None: 3-phase)

⑥ Motor efficiency

None: Standard efficiency (equivalent to IE1)

e: Top Runner efficiency (equivalent to IE3)

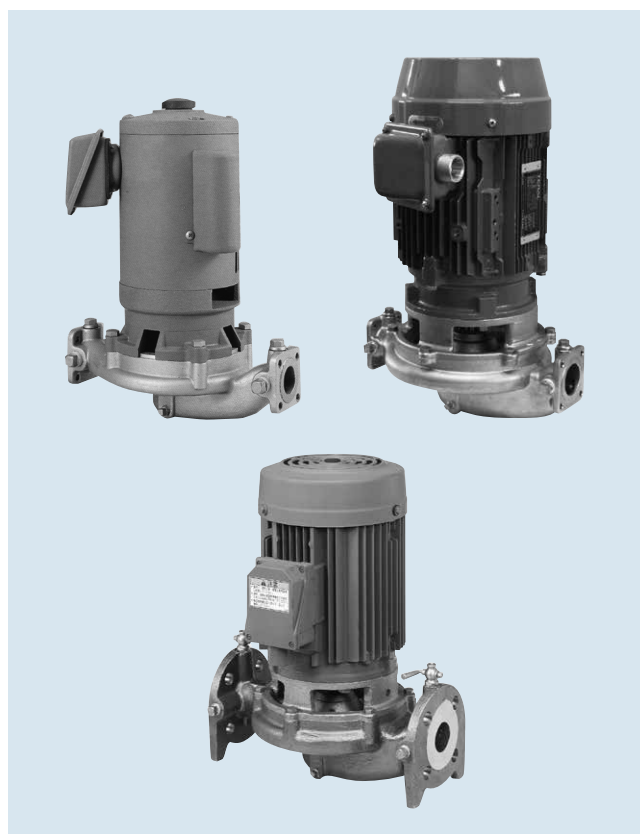
(0.25kW or less is equivalent to IE3 efficiency)

## Standard specifications

Pumping liquid	Liquid quality	Fresh water
	Liquid temperature	0~80°C *1
Total suction head (In case of 20°C)		-6m, For use with the total head 10m or less, take 60% or less of the total head.
Allowable push-in pressure		See the Specification table.
Structure	Impeller	Closed
	Shaft seal	Mechanical seal
	Bearing	Sealed ball bearing
Material	Impeller	SUS304 or SCS13 *2
	Motor shaft	SUS304 equivalent + S35C
	Casing	SCS13
Motor	Efficiency	Standard efficiency (equivalent to IE1) : Single-phase, 3-phase 0.15kW or less Equivalent to IE3 efficiency : Single-phase, 3-phase 0.25 - 0.4kW, Top Runner efficiency (equivalent to IE3) : 3-phase 0.75kW or more
	Starting method	Direct-on-Line start
	Type	Drip-proof protected type : Single-phase Totally-enclosed-fan-cooled outdoor type : 3-phase 0.15kW or more
	Power source	Single phase 100V : 80 - 400W 3-phase 200V : 0.15 - 7.5kW
	Synchronous rotation speed	3600min <sup>-1</sup>
Flange spec		Special flange or JIS 10K standard type
Paint color		7.5BG5/1.5

\*1 For more than 80°C, contact us.

\*2 SLP2-25 and SLP2-40-61.5, SLP2-50-61.5 are made of SUS304.



\* Please note that some of the devices in the photo may differ from actual devices in coating color, etc.

## Standard accessories

Companion flange (made of stainless steel).....1 set  
(Only SLP2(-e) models whose nominal diameter is 50mm or less)

## Special specifications

Structure	Shaft seal	Mechanical seal (SiC ~ carbon)
	Other	Drain (below the casing)
Motor	Type	Totally-enclosed-fan-cooled indoor type (single-phase)
	Power supply	Special voltage 400/440V (3-phase) *1
Paint*2		Specified color for the outer surface, salt-resistant paint, heavy-duty salt-resistant paint
Other		Oil free treatment (grade I)

\* Please note that in case of special specifications, the outline drawing, etc., may be different from the standard drawing.

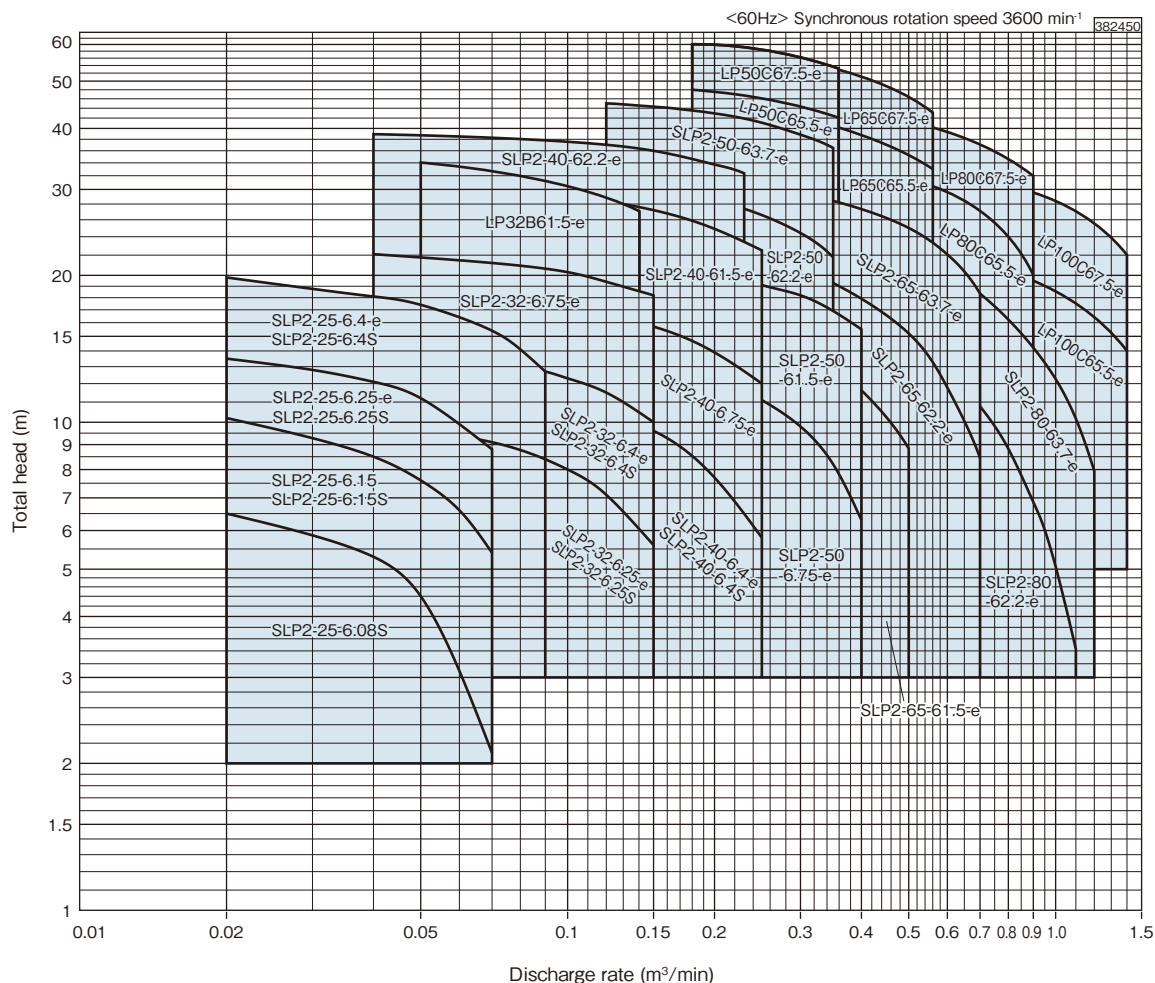
\*1 Totally-enclosed-fan-cooled outdoor type

\*2 Stainless steel parts are not painted.

## Special accessories

Companion flange (Packings, bolts and nuts included)  
(SLP2 models with a nominal diameter that is 65mm or more, LP model)

## Selection chart



## Specification table

## Single-phase

Nominal diameter mm	Model	Output W	Specifications				Allowable boost pressure MPa
			Discharge rate m <sup>3</sup> /min	Total head m	Discharge rate m <sup>3</sup> /min	Total head m	
25	SLP2-25-6.08S	80	0.02	6.5	0.07	2.1	0.20
	SLP2-25-6.15S	150	0.02	10.2	0.07	5.4	0.20
	SLP2-25-6.25S	250	0.02	13.5	0.07	8.8	0.20
	SLP2-25-6.4S	400	0.02	19.8	0.09	12.7	0.49
32	SLP2-32-6.25S	250	0.04	9.8	0.15	5.6	0.54
	SLP2-32-6.4S	400	0.04	14.2	0.15	10.0	0.49
40	SLP2-40-6.4S	400	0.07	11.7	0.25	5.8	0.54

## 3-phase

Nominal diameter mm	Model	Output W	Specifications				Allowable boost pressure MPa
			Discharge rate m <sup>3</sup> /min	Total head m	Discharge rate m <sup>3</sup> /min	Total head m	
25	SLP2-25-6.15	0.15	0.02	10.2	0.07	5.4	0.20
	SLP2-25-6.25-e	0.25	0.02	13.5	0.07	8.8	0.20
	SLP2-25-6.4-e	0.4	0.02	19.8	0.09	12.7	0.49
32	SLP2-32-6.25-e	0.25	0.04	9.8	0.15	5.6	0.54
	SLP2-32-6.4-e	0.4	0.04	14.2	0.15	10.0	0.49
	SLP2-32-6.75-e	0.75	0.04	22.1	0.15	18.2	0.41
	LP32B61.5-e	1.5	0.05	34.0	0.14	27.0	0.59
40	SLP2-40-6.4-e	0.4	0.07	11.7	0.25	5.8	0.54
	SLP2-40-6.75-e	0.75	0.07	17.7	0.25	12.0	0.48
	SLP2-40-6.15-e	1.5	0.07	29.8	0.25	22.5	0.38
	SLP2-40-6.22-e	2.2	0.04	38.9	0.23	32.3	0.60
50	SLP2-50-6.75-e	0.75	0.12	13.5	0.4	6.3	0.52
	SLP2-50-6.15-e	1.5	0.12	21.4	0.4	15.5	0.44
	SLP2-50-6.22-e	2.2	0.12	30.6	0.35	21.8	0.68
	SLP2-50-6.37-e	3.7	0.12	45.2	0.35	36.5	0.53
	LP50C65.5-e	5.5	0.18	48.0	0.36	42.0	0.39
65	LP50C67.5-e	7.5	0.18	60.0	0.36	53.0	0.39
	SLP2-65-6.15-e	1.5	0.25	16.1	0.5	8.8	0.69
	SLP2-65-6.22-e	2.2	0.25	22.2	0.7	8.4	0.69
	SLP2-65-6.37-e	3.7	0.25	30.6	0.7	18.3	0.66
	LP65C65.5-e	5.5	0.28	43.0	0.56	33.0	0.39
80	LP65C67.5-e	7.5	0.28	56.0	0.56	43.0	0.39
	SLP2-80-6.22-e	2.2	0.45	15.9	1.0	3.9	0.69
	SLP2-80-6.37-e	3.7	0.45	22.7	1.2	7.9	0.69
	LP80C65.5-e	5.5	0.45	32.0	0.9	20.0	0.39
100	LP80C67.5-e	7.5	0.45	42.0	0.9	32.0	0.39
	LP100C65.5-e	5.5	0.71	21.0	1.4	14.0	0.39
	LP100C67.5-e	7.5	0.71	31.0	1.4	22.0	0.39

## Motor specification table

Classification		Model	Output kW	Rating			Starting			Thermal class	Bearing*1	
Phase	Type			Voltage V	Current A	Rotation speed min <sup>-1</sup>	Torque %	Current A	Method		Load side (D.S)	Anti-load side (O.S)
Single-phase	Drip-proof protected type	SLP2	0.08	100	2.8	3470	280	21	Split-phase	E	6204DDW	6202VV
		SLP2	0.15	100	3.4	3375	145	21	Split-phase	E	6204DDW	6202VV
		SLP2	0.25	100	5.3	3385	220	21	Capacitor	E	6204DDW	6202VV
		SLP2	0.4	100	7.7	3410	220	32	Capacitor	E	6204DDW	6202VV
3-phase	Totally-enclosed-fan-cooled outdoor type	SLP2	0.15	200/220	0.84/0.80	3390/3425	235/285	3.4/3.7	Direct-on-Line start	F	6204DDW	6202VV
		SLP2-e	0.25	200/220	1.1/1.1	3465/3485	271/354	8.38/9.22	Direct-on-Line start	F	6204ZZC3	6204ZZC3
		SLP2-e	0.4	200/220	1.8/1.7	3465/3485	321/391	15.1/16.7	Direct-on-Line start	F	6204ZZC3	6204ZZC3
		SLP2-e	0.75	200/220	3.2/3.0	3440/3475	208/254	20.6/22.6	Direct-on-Line start	F	6205ZZC3	6204ZZC3
		SLP2-e	1.5	200/220	5.9/5.4	3465/3490	160/193	39.1/43	Direct-on-Line start	F	6306ZZC3	6205ZZC3
		LP-e	1.5	200/220	5.6/5.2	3470/3495	275/333	48.8/53.7	Direct-on-Line start	F	6306ZZC3E	6305ZZC3E
		SLP2-e	2.2	200/220	8.4/7.7	3465/3495	196/238	59/65	Direct-on-Line start	F	6306ZZC3	6205ZZC3
		SLP2-e	3.7	200/220	13.2/12.2	3485/3510	236/285	115/126	Direct-on-Line start	F	6307ZZC3	6206ZZC3
		LP-e	5.5	200/220	20.8/19.5	3520/3530	195/236	151/165	Direct-on-Line start	B	6308ZZC3E	6306ZZC3E
		LP-e	7.5	200/220	27.5/25.3	3510/3530	182/220	191/220	Direct-on-Line start	B	6308ZZC3E	6306ZZC3E

\*1 Urea-based grease is used for bearings.

## Component parts list

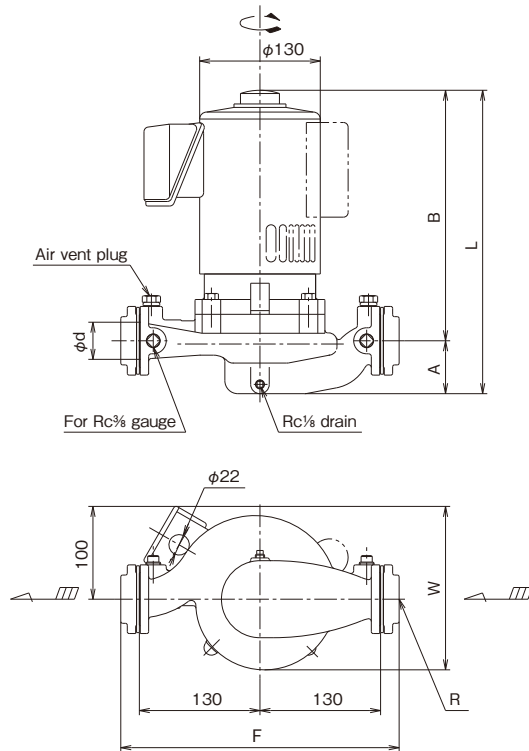
Type	Mechanical seal	O-ring (for casing)
SLP2-25-6.08S	Please contact us	
SLP2-25-6.15S		
SLP2-25-6.25S		
SLP2-25-6.4S		
SLP2-32-6.25S		
SLP2-32-6.4S		
SLP2-40-6.4S		
SLP2-25-6.25-e	H-16	G120
SLP2-25-6.4-e	H-16	G120
SLP2-32-6.25-e	H-16	G120
SLP2-32-6.4-e	H-16	G120
SLP2-32-6.75-e	H-16	G120
LP32B61.5-e	H-20H	K184
SLP2-40-6.4-e	H-16	G120
SLP2-40-6.75-e	H-16	G120
SLP2-40-61.5-e	H-20H	G140
SLP2-40-62.2-e	H-20H	K184

Type	Mechanical seal	O-ring (for casing)
SLP2-50-6.75-e	H-16	G120
SLP2-50-61.5-e	H-20H	G140
SLP2-50-62.2-e	H-20H	K184
SLP2-50-63.7-e	H-20H	K184
LP50C65.5-e	EA560-25	K198
LP50C67.5-e	EA560-25	K198
SLP2-65-61.5-e	H-20H	G140
SLP2-65-62.2-e	H-20H	G140
SLP2-65-63.7-e	H-20H	G140
LP65C65.5-e	EA560-25	K198
LP65C67.5-e	EA560-25	K198
SLP2-80-62.2-e	H-20H	K160
SLP2-80-63.7-e	H-20H	K160
LP80C65.5-e	EA560-25	K198
LP80C67.5-e	EA560-25	K198
LP100C65.5-e	EA560-25	K198
LP100C67.5-e	EA560-25	K198



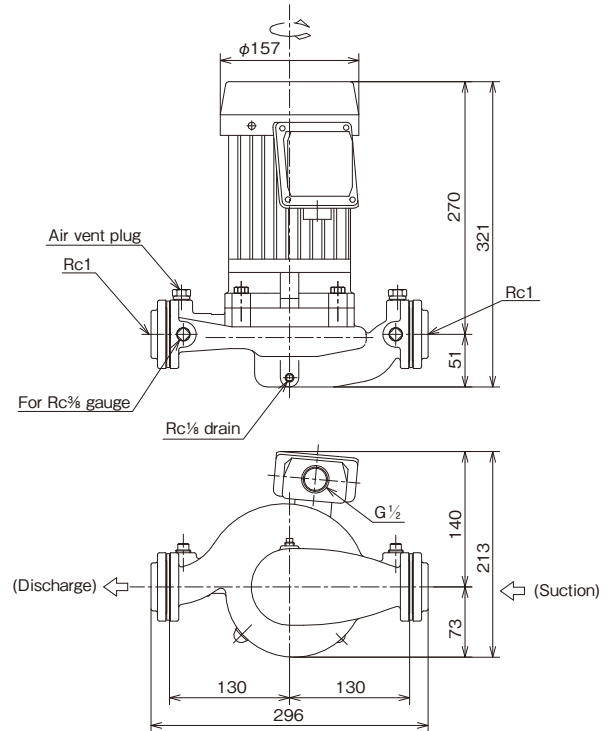
## ■ Assembly drawing

## ● SLP2 25~40 Single-phase

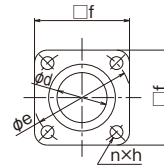


## ■ Assembly drawing

## ● SLP2-25-6.15



Nominal diameter: 25mm  
Phase/voltage: 3-phase/200V  
Output: 0.15kW  
Approx. mass: 12kg



Applicable bores: 25A, 32A, 40A

## Flange dimensions

(Unit: mm)

Nominal diameter d	e	f	n x h	R
25	60	62	4 x M8	Rc 1
32	76	74	4 x M8	Rc 1 1/4
40	76	74	4 x M8	Rc 1 1/2

## ■ Dimensions

## Single-phase

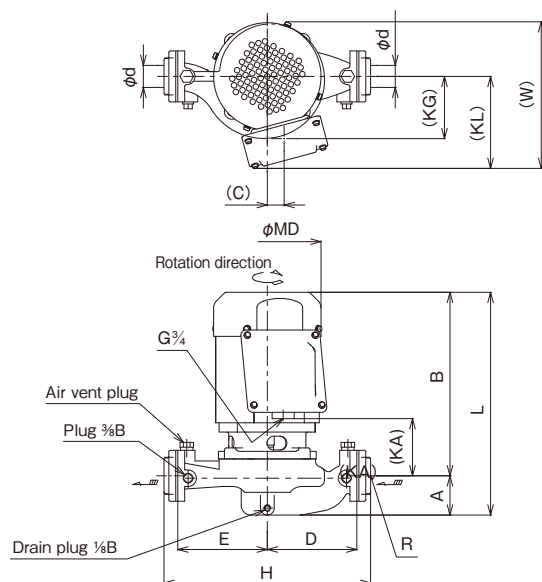
(Unit: mm)

Nominal diameter d	Type	Output W	A	B	F	L	W	Approx. mass kg
25	SLP2-25-6.08S	80	51	279	296	330	173	12.5
	SLP2-25-6.15S	150	51	279	296	330	173	12.5
	SLP2-25-6.25S	250	51	289	296	340	173	13.7
	SLP2-25-6.4S	400	51	315	296	366	173	16.0
32	SLP2-32-6.25S	250	57	293	300	350	177	14.8
	SLP2-32-6.4S	400	57	319	300	376	177	17.1
40	SLP2-40-6.4S	400	63	323	300	386	175	16.9

## ■外形寸法図

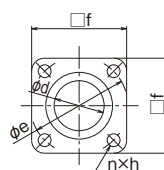
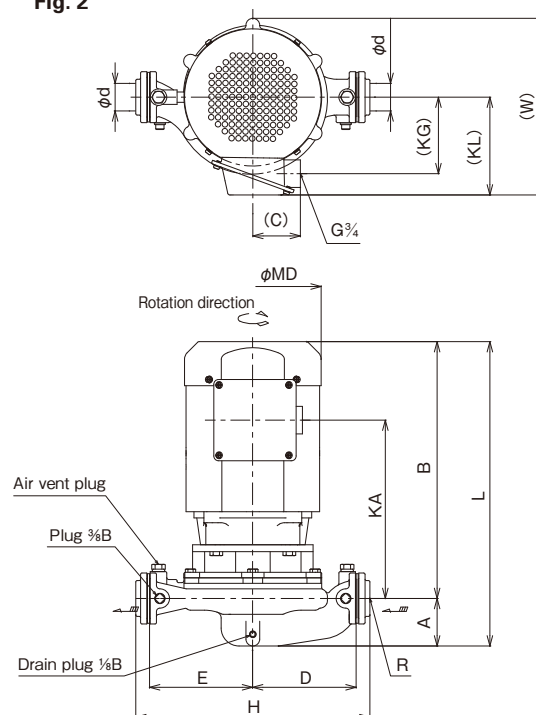
## ●SLP2 25~50 0.25~0.75kW

Fig. 1



## ●SLP2 40~50 1.5~3.7kW

Fig. 2



Applicable bores: 25A, 32A, 40A, 50A

## Flange dimensions

(Unit: mm)

Nominal diameter d	e	f	n x h	R
25	60	62	4 x M8	Rc 1
32	76	74	4 x M8	Rc 1 1/4
40	76	74	4 x M8	Rc 1 1/2
50	88	84	4 x M8	Rc 2

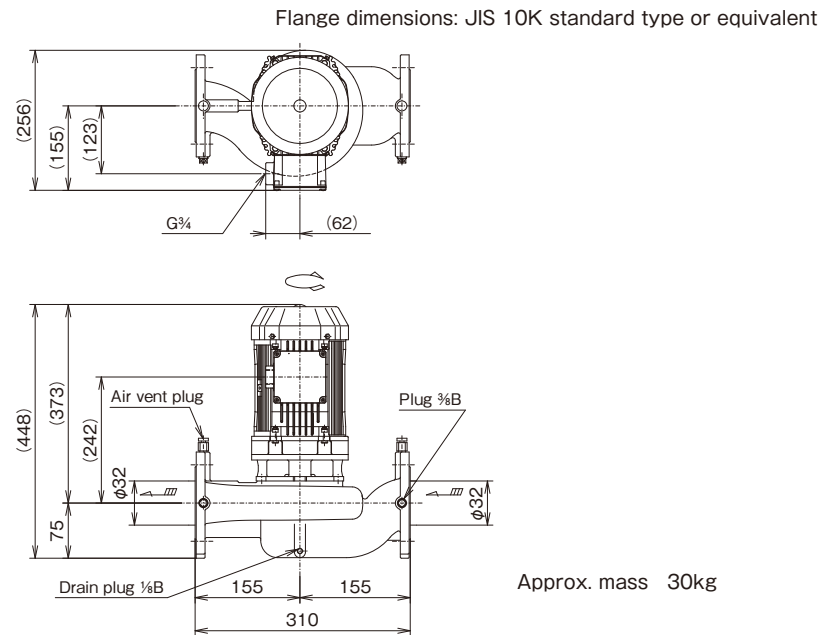
## ■Dimensions

(Unit: mm)

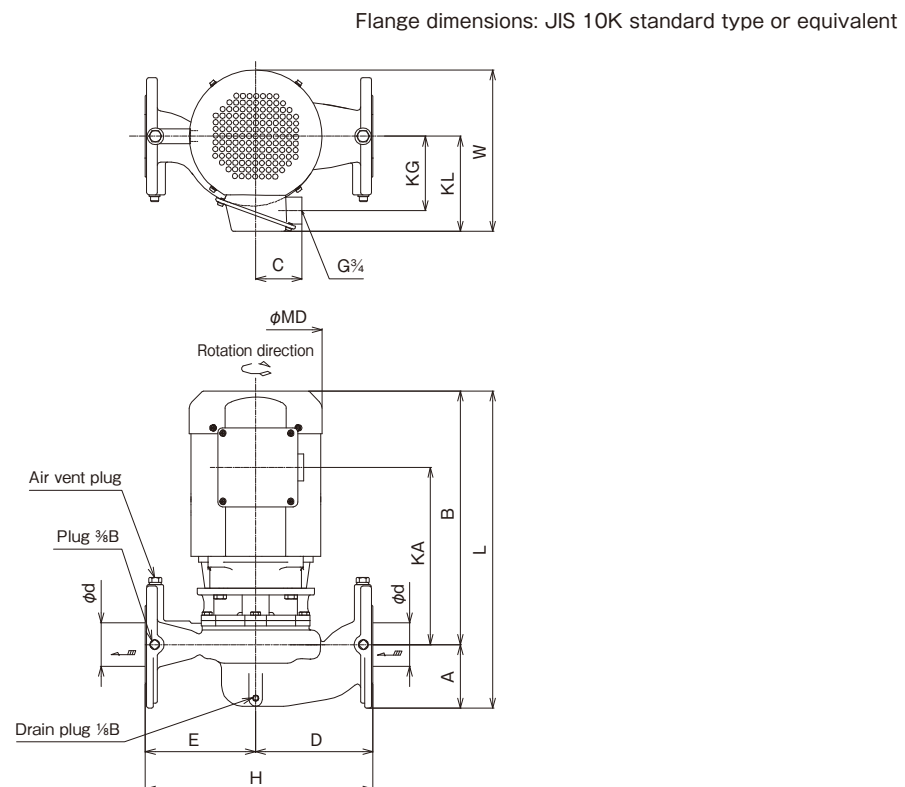
Nominal diameter d	Type	Output kW	Fig.	A	B	C	D	E	H	KA	KG	KL	L	MD	W	Approx. mass kg
25	SLP2-25-6.25-e	0.25	1	51	263	24	130	130	296	79	90	134	314	156	213	12
	SLP2-25-6.4-e	0.4	1	51	278	24	130	130	296	94	90	134	329	156	213	15
32	SLP2-32-6.25-e	0.25	1	57	267	24	130	130	300	83	90	134	324	156	213	13
	SLP2-32-6.4-e	0.4	1	57	282	24	130	130	300	98	90	134	339	156	213	16
	SLP2-32-6.75-e	0.75	1	57	286	26	130	130	300	109	97	140	343	170	225	19
40	SLP2-40-6.4-e	0.4	1	63	286	24	130	130	300	103	90	134	349	156	213	16
	SLP2-40-6.75-e	0.75	1	63	290	26	130	130	300	114	97	140	353	170	225	19
	SLP2-40-6.15-e	1.5	2	64	343	69	130	130	300	232	111	142	407	198	241	26
	SLP2-40-6.22-e	2.2	2	69	388	72	150	150	340	274	111	142	457	198	257	37
50	SLP2-50-6.75-e	0.75	1	65	295	26	130	130	308	119	97	140	360	170	225	19
	SLP2-50-6.15-e	1.5	2	66	346	69	130	130	308	235	111	142	412	198	241	26
	SLP2-50-6.22-e	2.2	2	74	391	72	150	150	348	277	111	142	465	198	257	38
	SLP2-50-6.37-e	3.7	2	74	421	85	150	150	348	274	152	193	495	241	307	48

## Assembly drawing

### ●LP32B61.5-e



### ●SLP2 65~80



## Dimensions

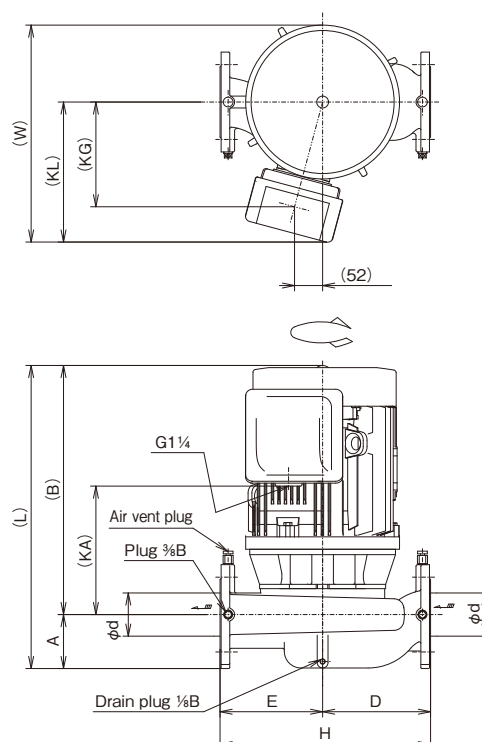
(Unit: mm)

Nominal diameter d	Type	Output kW	A	B	C	D	E	H	KA	KG	KL	L	MD	W	Approx. mass kg
65	SLP2-65-61.5-e	1.5	95	379	69	175	165	340	265	111	142	474	198	241	40
	SLP2-65-62.2-e	2.2	95	394	72	175	165	340	280	111	142	489	198	241	42
	SLP2-65-63.7-e	3.7	95	424	85	175	165	340	277	152	193	518	241	307	52
80	SLP2-80-62.2-e	2.2	100	403	72	200	190	390	289	111	142	503	198	245	45
	SLP2-80-63.7-e	3.7	100	433	85	200	190	390	286	152	193	533	241	303	54

## Assembly drawing

●LP 5.5~7.5kW

Flange dimensions: JIS 10K standard type or equivalent



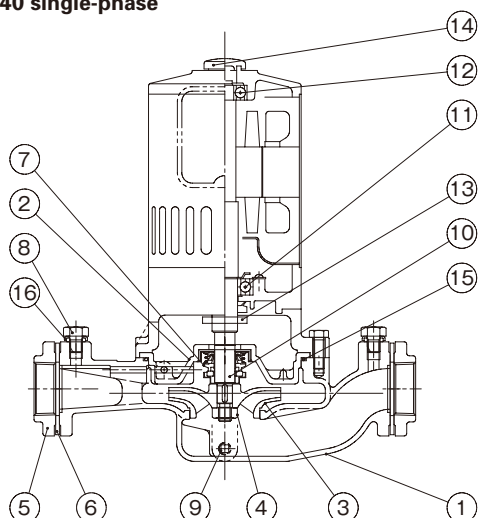
## Dimensions

(Unit: mm)

Nominal diameter d	Type	Output kW	A	B	D	E	H	KA	KG	KL	L	W	Approx. mass kg
50	LP50C65.5-e	5.5	85	458	170	170	340	235	194	260	543	402	82
	LP50C67.5-e	7.5	85	458	170	170	340	235	194	260	543	402	92
65	LP65C65.5-e	5.5	95	458	185	185	370	235	194	260	553	402	88
	LP65C67.5-e	7.5	95	458	185	185	370	235	194	260	553	402	98
80	LP80C65.5-e	5.5	100	461	200	190	390	238	194	260	561	402	88
	LP80C67.5-e	7.5	100	461	200	190	390	238	194	260	561	402	98
100	LP100C65.5-e	5.5	115	460	225	205	430	237	194	260	575	402	95
	LP100C67.5-e	7.5	115	460	225	205	430	237	194	260	575	402	105

## Example of sectional drawing

●SLP2 25 – 40 single-phase



## Parts list

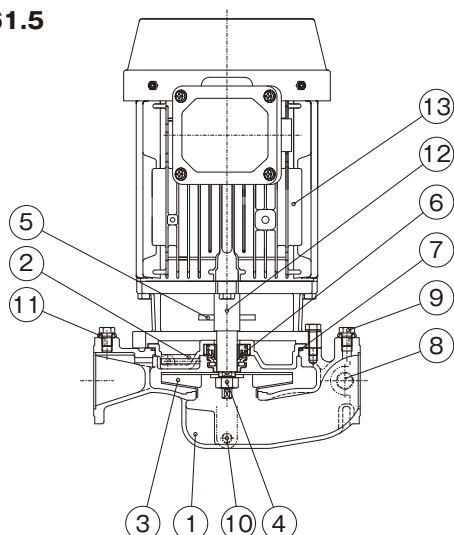
No.	Part name	Qty	Material
1	Casing	1	SCS13
2	Seal cover	1	SCS13
3	Impeller	1	SUS304 or SCS13
4	Impeller nut	1	SUS304
5	Companion flange	2	SCS13
6	Sheet packing	2	Synthetic fiber
7	Mechanical seal	1	CERAMICS~CARBON
8	Air vent plug	2	SUS304
9	Drain plug	1	SUS304
10	Shaft	1	SUS304
11	Ball bearing	1	SUJ2
12	Ball bearing	1	SUJ2
13	Deflector	1	NBR
14	End cap	1	CR
15	O-ring	1	NBR
16	Seal washer	2	SUS304+NBR

Impeller material: SUS304 for bore 25 models, and SCS13 for other models.



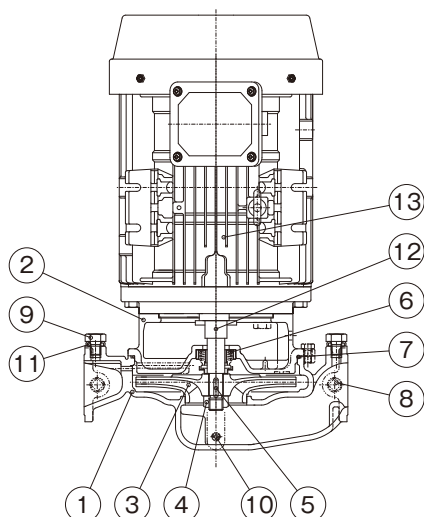
## Example of sectional drawing

### ●SLP2-40-61.5



\* The above is a representative example. For details, see the sectional drawing of each model.

### ●SLP2-65



\* The above is a representative example. For details, see the sectional drawing of each model.

## Parts list

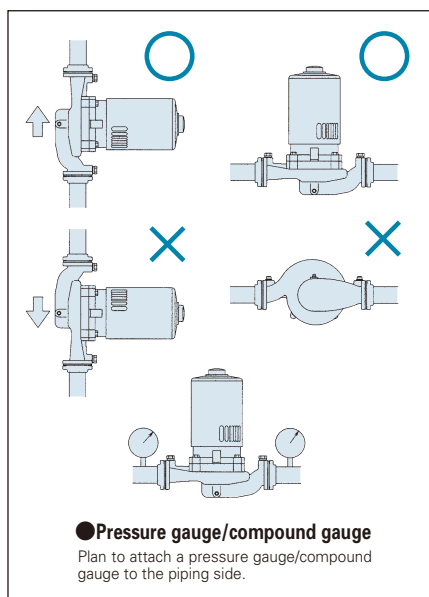
No.	Part name	Qty	Material
1	Casing	1	SCS13
2	Casing cover	1	SCS13
3	Impeller	1	SUS304
4	Impeller nut	1	SUS304
5	Deflector	1	NBR
6	Mechanical seal	1	CERAMICS~CARBON
7	O-ring	1	NBR
8	Plug	2	SUS304
9	Air vent plug	2	SUS304
10	Drain plug	1	SUS304
11	Seal washer	2	SUS304+NBR
12	Motor shaft *1	1	SUS304+S45C
13	Motor	1	

\*1 The indicated materials are equivalent products.

No.	Part name	Qty	Material
1	Casing	1	SCS13
2	Frame	1	SCS13
3	Impeller	1	SCS13
4	Impeller nut	1	SUS304
5	Key	1	SUS304
6	Mechanical seal	1	CERAMICS~CARBON
7	O-ring	1	NBR
8	Plug	2	SUS304
9	Air vent plug	2	SUS304
10	Drain plug	1	SUS304
11	Seal washer	2	SUS304+NBR
12	Motor shaft *1	1	SUS304+S45C
13	Motor	1	

\*1 The indicated materials are equivalent products.

## Installation method



MEMO

MEMO



### **TERAL INC.**

Head Office 230, Moriwake, Miyuki-cyo, Fukuyama-city, Hiroshima, 720-0003, Japan  
Tel.+81-84-955-1111 Fax.+81-84-955-5777  
www.teral.net

### **Teral Asia Limited**

Room 1001,10/F, Olympia Plaza, 255 King's Road, North Point, Hong Kong  
Tel.+852-2571-0935 Fax.+852-2571-0619

### **TERAL THAI CO.,LTD.**

150 Moo 16 Udomsoraryuth Rd., T.Bangkrasan, A.Bangpa-In, Ayutthaya 13160 Thailand  
Tel.+66-3535-2148-9 Fax.+66-3535-2150

### **TERAL TRADING & SERVICE CO.,LTD.**

150 Moo 16 Udomsoraryuth Rd., T.Bangkrasan, A.Bangpa-In, Ayutthaya 13160 Thailand  
Tel.+66-3535-2145-7 Fax.+66-3535-8549

### **Teral Malaysia Sdn.Bhd.**

10, Jalan SS13/6A, Subang Jaya Industrial Estate, 47500, Subang Jaya, Selangor D.E, Malaysia  
Tel.+60-3-5611 5775 Fax.+60-3-5612 5775

### **PT.Teral Indonesia Pumps and Fans**

Komplek Pergudangan Taman Tekno Blok M No.26.Jl.BSD Sektor XI, Kelurahan Setu,  
Kecamatan Setu, Kota Tangerang Selatan, Provinsi Banten.15314.  
Tel.+62-21-29665778 Fax.+62-21-75673913

### **Teral Vietnam Limited Liability Company**

9th Floor, LADECO Building, No. 266 Doi Can Street, Lieu Giai Ward, Ba Dinh District, Hanoi City, Vietnam  
Tel.+84-24-393-52-790 Fax.+84-24-393-52-289

### **Teral General Machine (Shanghai) Co.,Ltd.**

No.285, Yuan Qu Road(N), Bei Qiao, Min Hang District, Shanghai 201109, China  
Tel.+86-21-6490-9128 Fax.+86-21-6490-9126

### **Teral-Aerotech Fans Private Ltd.**

Plot No.188-189, Ecotech Extension-1, Surajpur Kasna Road, Greater Noida-201306, Uttar Pradesh, India  
Tel.+91-9810162210, +91-9310162210

### **Teral Middle East F.Z.C.**

1806-002, 18th floor, BB1, Mazaya Business Avenue, JLT, Dubai, UAE. PO Box 414781  
Tel.+971-4369 9039

### **Teral Pumps & Fans North America Ltd.**

Suite # 197, 800-15355 24 Ave Surrey, B.C., CANADA V4A 2H9  
Tel.+1-604-839-1008

### **Teral Philippines Inc.**

Roof Deck 3, Vernida 1 Building, 120 Amorsolo St., Legaspi Village, Makati City  
Tel.+63 2 7717-9314